



A Substantial Four Bedroom Grade II Listed House

KENDAL STREET

HYDE PARK ESTATE, W2

Guide Price
£2,800,000

**BERKSHIRE
HATHAWAY**
HOMESERVICES

LONDON

PROPERTY DETAILS

Guide Price
£2,800,000

Square Footage
2068

Council Tax Band
H

EPC
E

Tenure
Freehold

A characterful Grade II listed 4 bedroom home situated in the heart of Connaught Village which has the potential to be used as a 3 bed home upstairs and a self-contained 1 bedroom lower ground floor apartment. The property benefits from a sunny roof terrace, access to communal gardens and has retained many of its original features such as cornices and fireplaces.

Kendal Street is perfectly located amongst the myriad boutique shops, restaurants and cafes of Connaught Village which is a convenient walk away from the wide open spaces of Hyde Park and the transport facilities of Paddington Station and Marble Arch.

FEATURES

Four Bedrooms

Two Reception Room

Three Bathrooms

Terraced

Patio

LOCATION



HYDE PARK SALES

24-25 Albion Street, W2 2AX

020 7262 2030

sales.hydepark@bhhs-london.com

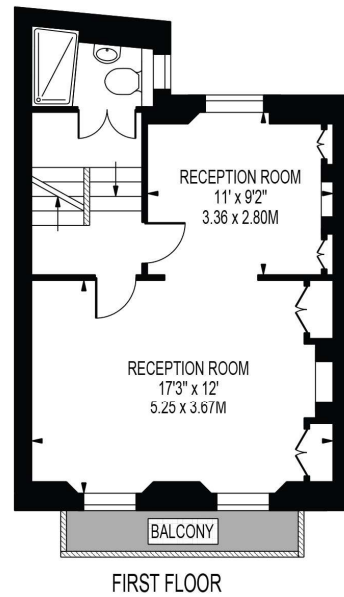
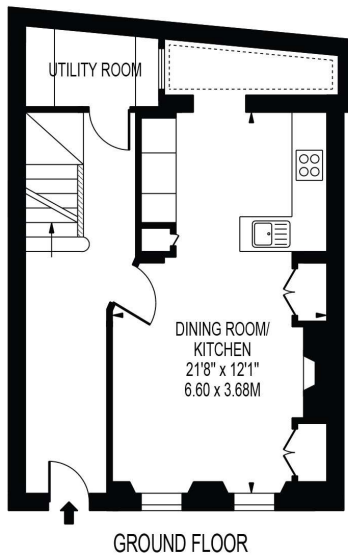
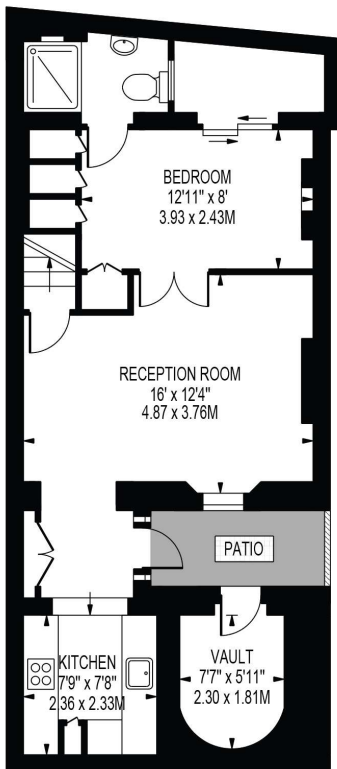
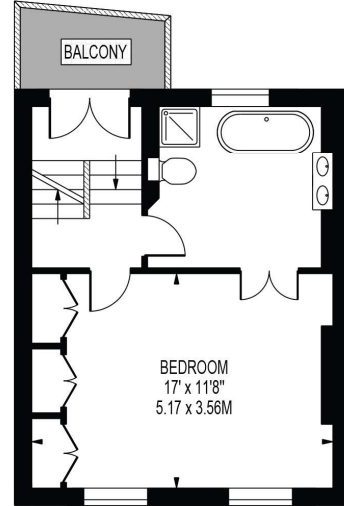
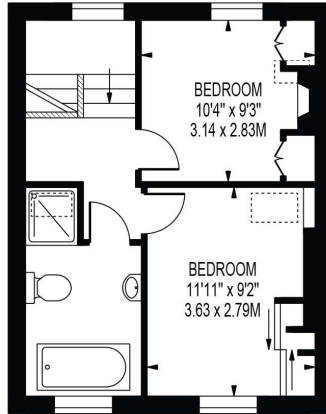


FLOORPLAN

KENDAL STREET

APPROXIMATE GROSS INTERNAL FLOOR AREA: 2068 SQ FT - 192.13 SQ M
(EXCLUDING VAULT)

APPROXIMATE GROSS INTERNAL FLOOR AREA OF VAULT: 43 SQ FT - 3.98 SQ M



FOR ILLUSTRATION PURPOSES ONLY

THIS FLOOR PLAN SHOULD BE USED AS A GENERAL OUTLINE FOR GUIDANCE ONLY AND DOES NOT CONSTITUTE IN WHOLE OR IN PART AN OFFER OR CONTRACT. ANY INTENDING PURCHASER OR LESSEE SHOULD SATISFY THEMSELVES BY INSPECTION, SEARCHES, ENQUIRIES AND FULL SURVEY AS TO THE CORRECTNESS OF EACH STATEMENT. ANY AREAS, MEASUREMENTS OR DISTANCES QUOTED ARE APPROXIMATE AND SHOULD NOT BE USED TO VALUE A PROPERTY OR BE THE BASIS OF ANY SALE OR LET.