



Hyde Park Square

Hyde Park Estate, W2 2JR

£692 per week

**BERKSHIRE
HATHAWAY**
HOMESERVICES

LONDON

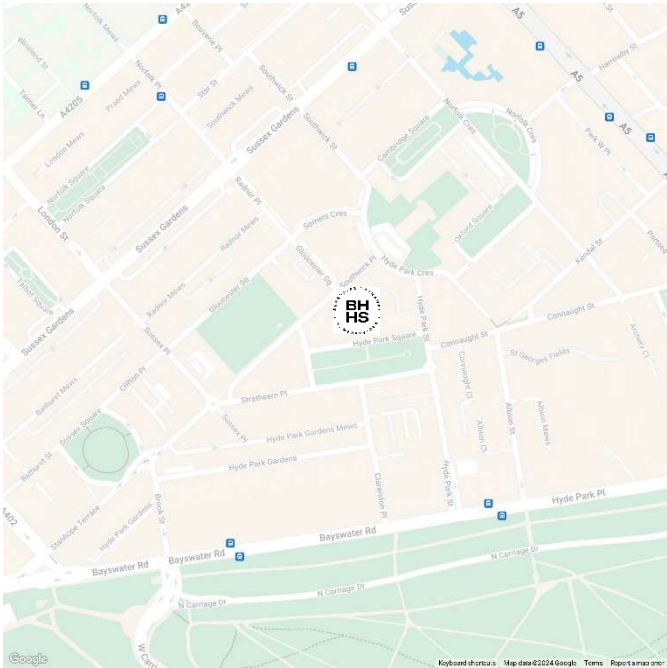
PROPERTY DETAILS

Guide Price £692 per week	Square Footage 614	<p>The apartment contains a spacious entrance hall, modern bathroom, large double bedroom with ample storage and a voluminous reception room with open plan kitchen, incredible high ceilings and a large window offering views over the Square. Neutrally decorated throughout and with the added benefit of wooden floors.</p> <p>Further to the main apartment is a separate studio room with its own kitchenette and shower room, an ideal place to house guests or a work from home space, available by separate negotiation.</p> <p>Hyde Park Square is located on the western edge of popular Connaught Village and within a short walk to Hyde Park itself. Transport from either Marble Arch Underground (Central Line) or Paddington Underground (Circle, Hammersmith & City Line) or Paddington Overground Railway Station.</p>
Council Tax F	EPC C	

FEATURES

- One Bedrooms
- One Receptions
- One Bathrooms
- Terraced
- Ground Floor
- Communal Gardens
- High Ceilings

LOCATION



HYDE PARK & BAYSWATER LETTINGS
24-25 Albion Street, W2 2AX

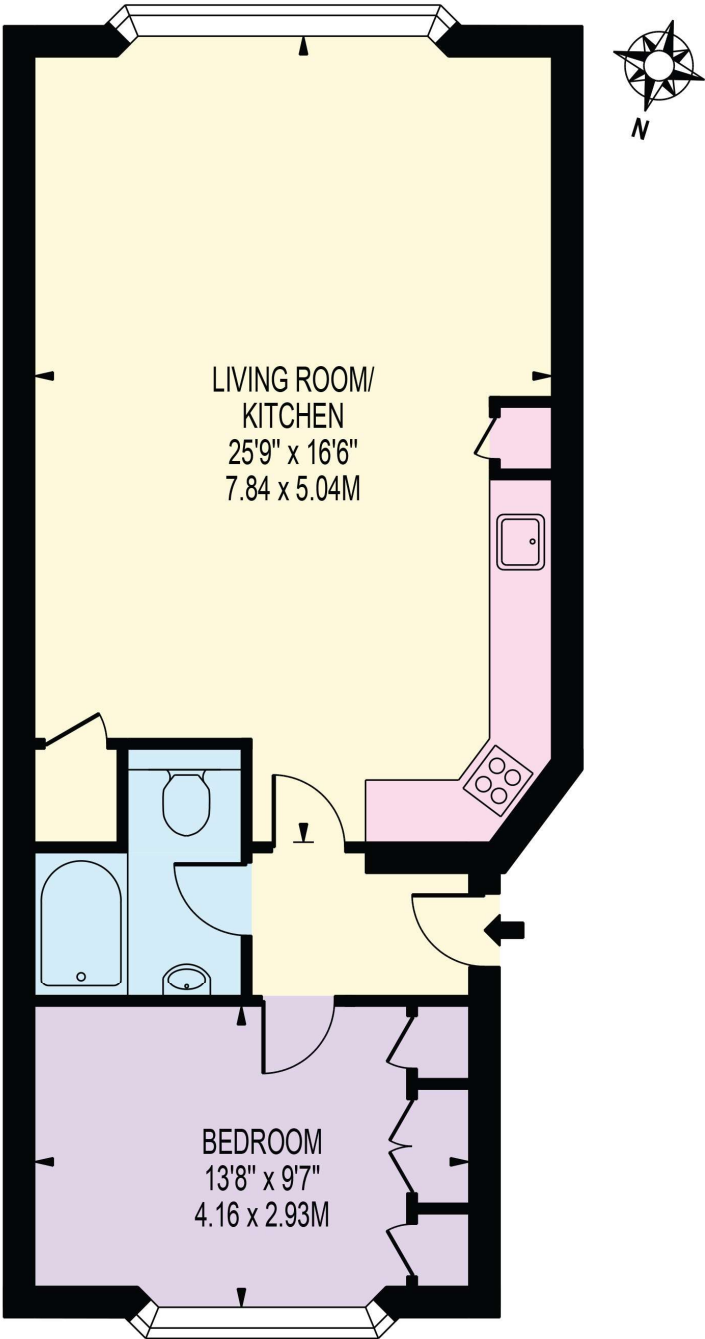
020 7262 2030
lettings.hydepark@bhhs-london.com



FLOORPLAN

HYDE PARK SQUARE

APPROXIMATE GROSS INTERNAL FLOOR AREA: 612 SQ FT - 56.86 SQ M



GROUND FLOOR

FOR ILLUSTRATION PURPOSES ONLY

THIS FLOOR PLAN SHOULD BE USED AS A GENERAL OUTLINE FOR GUIDANCE ONLY AND DOES NOT CONSTITUTE IN WHOLE OR IN PART AN OFFER OR CONTRACT.
ANY INTENDING PURCHASER OR LESSEE SHOULD SATISFY THEMSELVES BY INSPECTION, SEARCHES, ENQUIRIES AND FULL SURVEY AS TO THE CORRECTNESS OF EACH STATEMENT.
ANY AREAS, MEASUREMENTS OR DISTANCES QUOTED ARE APPROXIMATE AND SHOULD NOT BE USED TO VALUE A PROPERTY OR BE THE BASIS OF ANY SALE OR LET.