



A Spacious One Bedroom Flat Moments from
Marylebone High Street

NOTTINGHAM PLACE

MARYLEBONE, W1U

£1,050 per week

**BERKSHIRE
HATHAWAY**
HOMESERVICES

LONDON

PROPERTY DETAILS

Guide Price
£1,050 per week

Square Footage
579

Council Tax Band
E

EPC Rating
C

This immaculately presented newly refurbished one bedroom flat is arranged on the raised ground floor of this period conversion.

The property benefits from an open plan kitchen to reception room, a family bathroom with separate shower and standalone bath, a large double bedroom with good storage and wood flooring throughout.

It is ideally located behind the Marylebone High Street and only moments from Baker Street Underground Station and the open spaces of Regents Park.

FEATURES

One Bedroom

One Reception Room

One Bathrooms

Period

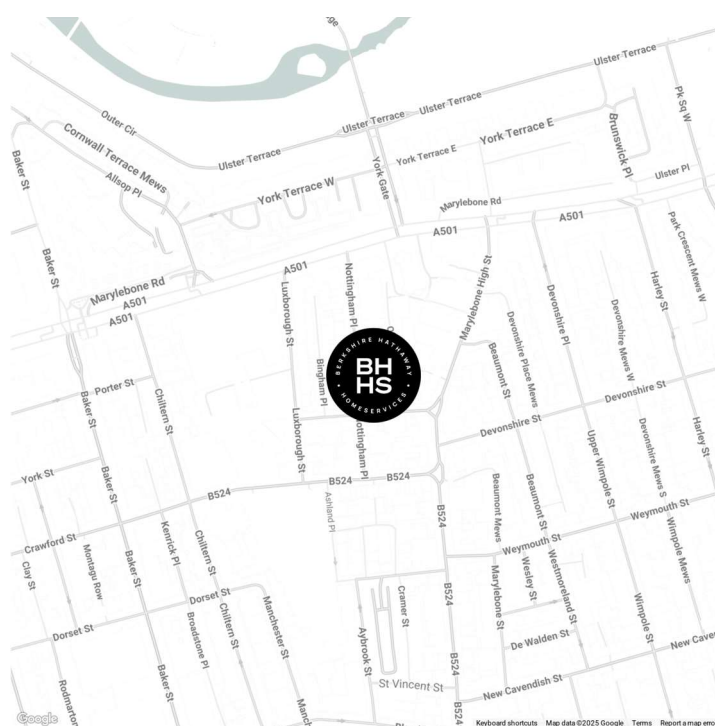
Ground Floor

Furnished

Wooden Flooring

Storage

LOCATION



MARYLEBONE LETTINGS

20A Paddington Street, W1U 5QP

020 7486 6338

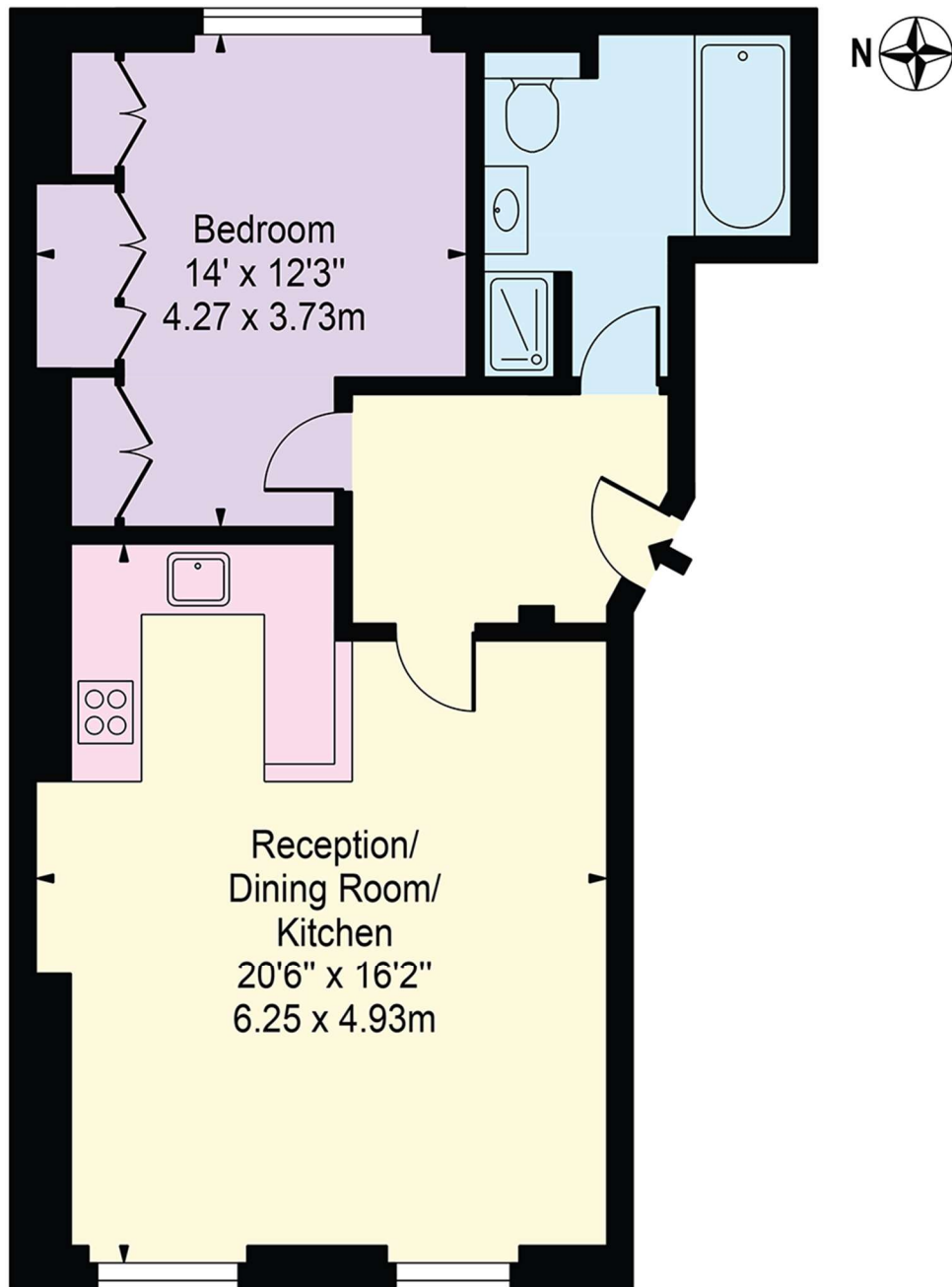
lettings.marylebone@bhhs-london.com



FLOORPLAN

Nottingham Place

Approx. Gross Internal Area 583 Sq Ft - 54.16 Sq M



Raised Ground Floor

For Illustration Purposes Only - Not To Scale

This floor plan should be used as a general outline for guidance only and does not constitute in whole or in part an offer or contract. Any intending purchaser or lessee should satisfy themselves by inspection, searches, enquiries and full survey as to the correctness of each statement. Any areas, measurements or distances quoted are approximate and should not be used to value a property or be the basis of any sale or let.

Copyright Morriarti Photography & Design LTD