



Stunning Four-Bedroom Family Home with Roof  
Terrace and Hyde Park Views

# HYDE PARK SQUARE

HYDE PARK, W2

£2,538.46 per week

**BERKSHIRE  
HATHAWAY**  
HOMESERVICES

LONDON

# PROPERTY DETAILS

<b>Guide Price</b> £2,538.46 per week	<b>Square Footage</b> 2253
<b>Council Tax Band</b> H	<b>EPC Rating</b> D

A beautifully refurbished four-bedroom family home in the prestigious Hyde Park Square, W2, offering elegant living spaces and stunning views across Hyde Park. Finished to a high standard, the property features two spacious reception rooms, a modern fully fitted kitchen, four large double bedrooms, a guest cloakroom, a private garage, and a roof terrace ideal for outdoor relaxation. Perfectly located within walking distance of Marble Arch and Paddington underground stations, this exceptional home combines luxury, comfort, and convenience in one of London's most desirable locations.

## FEATURES

- Five Bedrooms
- Two Reception Rooms
- Two Bathrooms
- Garage

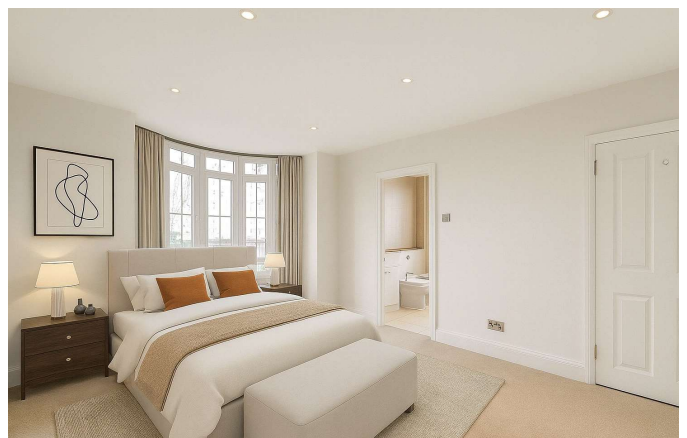
## LOCATION



**HYDE PARK LETTINGS**  
24-25 Albion Street, W2 2AX

020 7262 2030  
lettings.hydepark@bhhs-london.com





# FLOORPLAN

## Hyde Park Square, W2

Approximate Gross Internal Floor Area : 2253 sq ft / 209.3 sq m (Excluding Garage & Vaults)  
Approximate Gross Internal Floor Area : 2586 sq ft / 240.2 sq m (Including Vaults)



Illustration for identification purposes only, measurements are approximate, not to scale.