



One Bedroom Flat in Grade II Listed Building

WEYMOUTH STREET

MARYLEBONE, W1G

£807 per week

**BERKSHIRE
HATHAWAY**
HOMESERVICES

LONDON

PROPERTY DETAILS

Guide Price £807 per week	Square Footage 647
Council Tax Band E	EPC Rating D

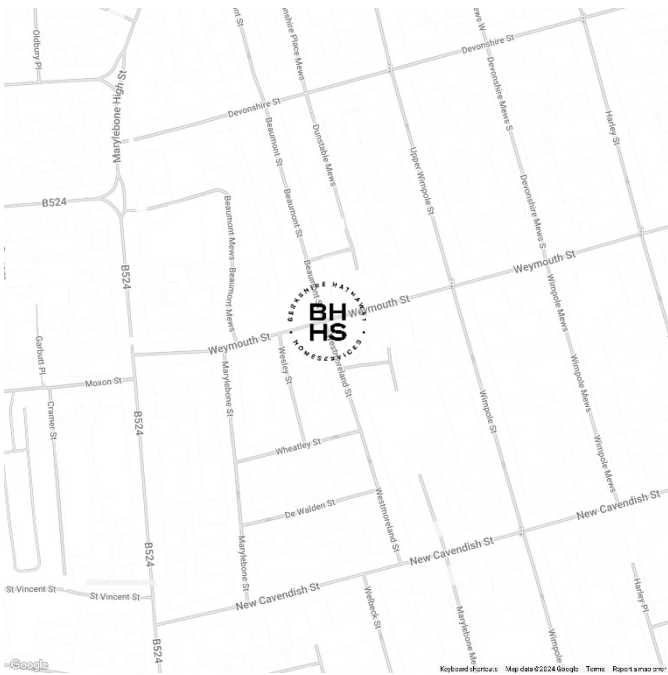
A beautifully presented one bedroom flat on the ground floor of this grade II listed building. The property benefits from an open plan kitchen to reception room with wood flooring, a working gas fire, large double bedroom with ensuite bathroom and a guest wc.

It is ideally located moments from the boutiques and restaurants of the chic Marylebone High Street and Bond Street Underground Station.

FEATURES

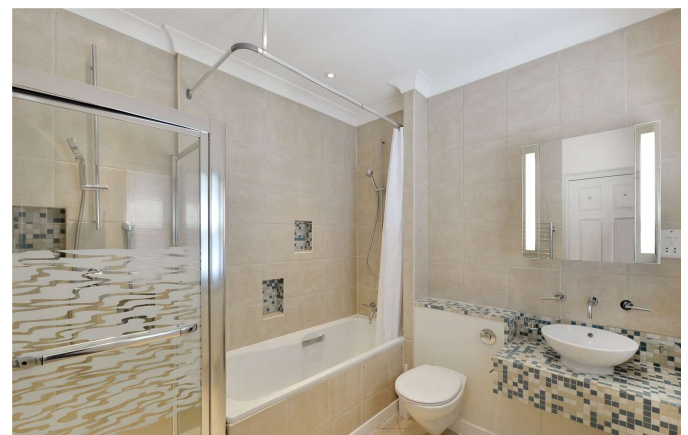
- One Bedroom
- One Reception Room
- One Bathroom
- High Ceilings
- Close to Transport

LOCATION

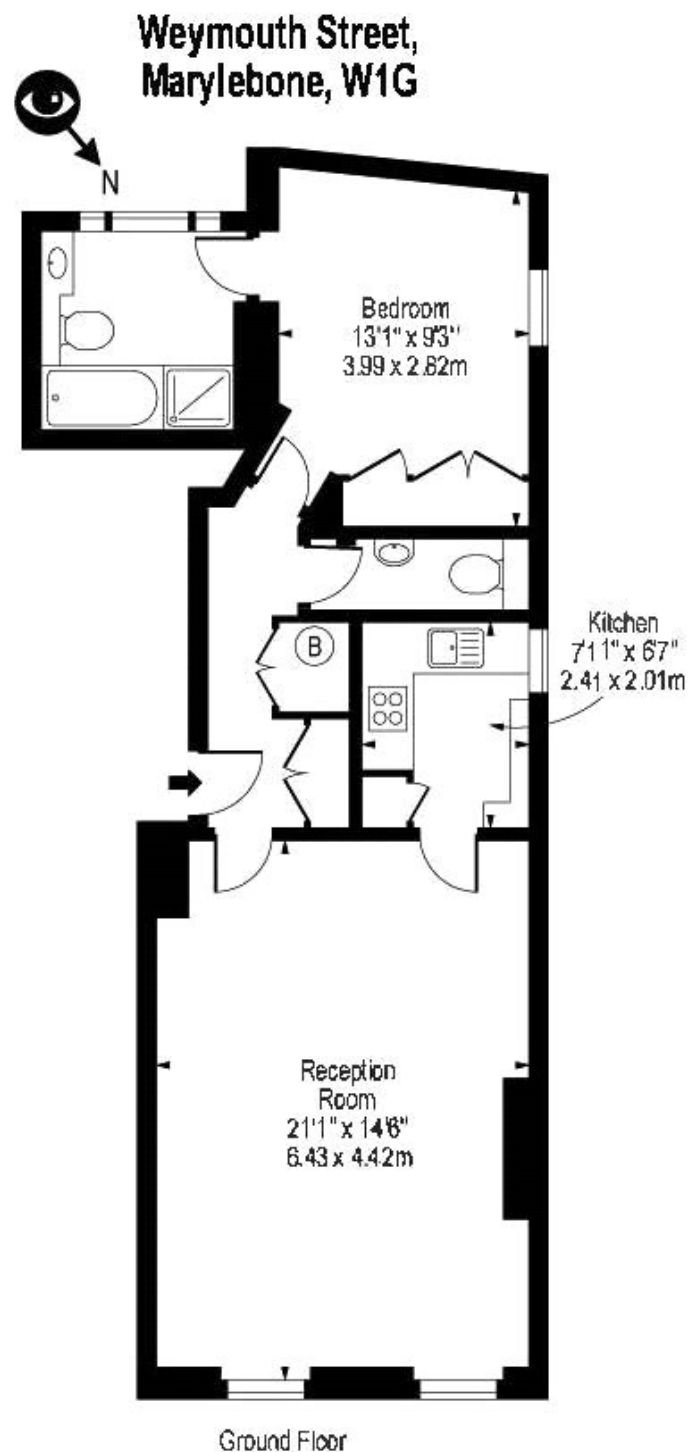


MARYLEBONE LETTINGS
20A Paddington Street, W1U 5QP

020 7486 6338
lettings.marylebone@bhhs-london.com



FLOORPLAN



Approx Gross Internal Area 647 Sq Ft - 60.11 Sq M

For Illustration Purposes Only - Not To Scale

Floor Plan by www.bpmmediagroup.com

Ref. No. P45735