



Stunning Two Bedroom Apartment with Far
Reaching Views

PORCHESTER PLACE

HYDE PARK ESTATE, W2

£960 per week

**BERKSHIRE
HATHAWAY**
HOMESERVICES

LONDON

PROPERTY DETAILS

Guide Price £960 per week	Square Footage 833
Council Tax Band G	EPC Rating C

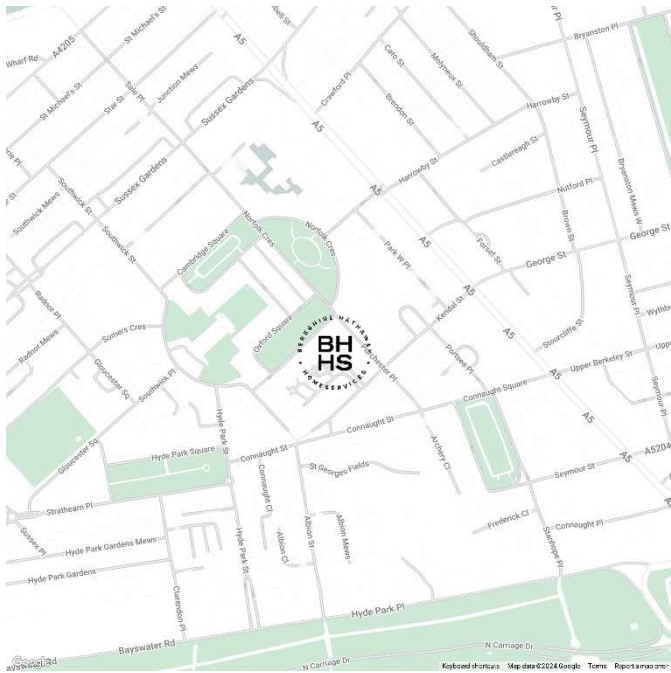
A thoughtfully laid out and beautifully presented two bedroom, two bathroom apartment situated on the 18th floor of a secure portered development, conveniently and centrally located on the Hyde Park Estate. The property enjoys breathtaking panoramic views over central London and beyond towards Canary Wharf.

25 Porchester Place is a secure 24 hour portered building with three large passenger lifts and is ideally located minutes from Hyde Park and Oxford Street. Local transport amenities are close at hand including Paddington Station, The Elizabeth Line and the Central Line at Marble Arch.

FEATURES

- Two Bedrooms
- One Reception Room
- Two Bathrooms
- Concierge/Porter
- Upper Floor
- Lift

LOCATION



HYDE PARK LETTINGS
24-25 Albion Street, W2 2AX

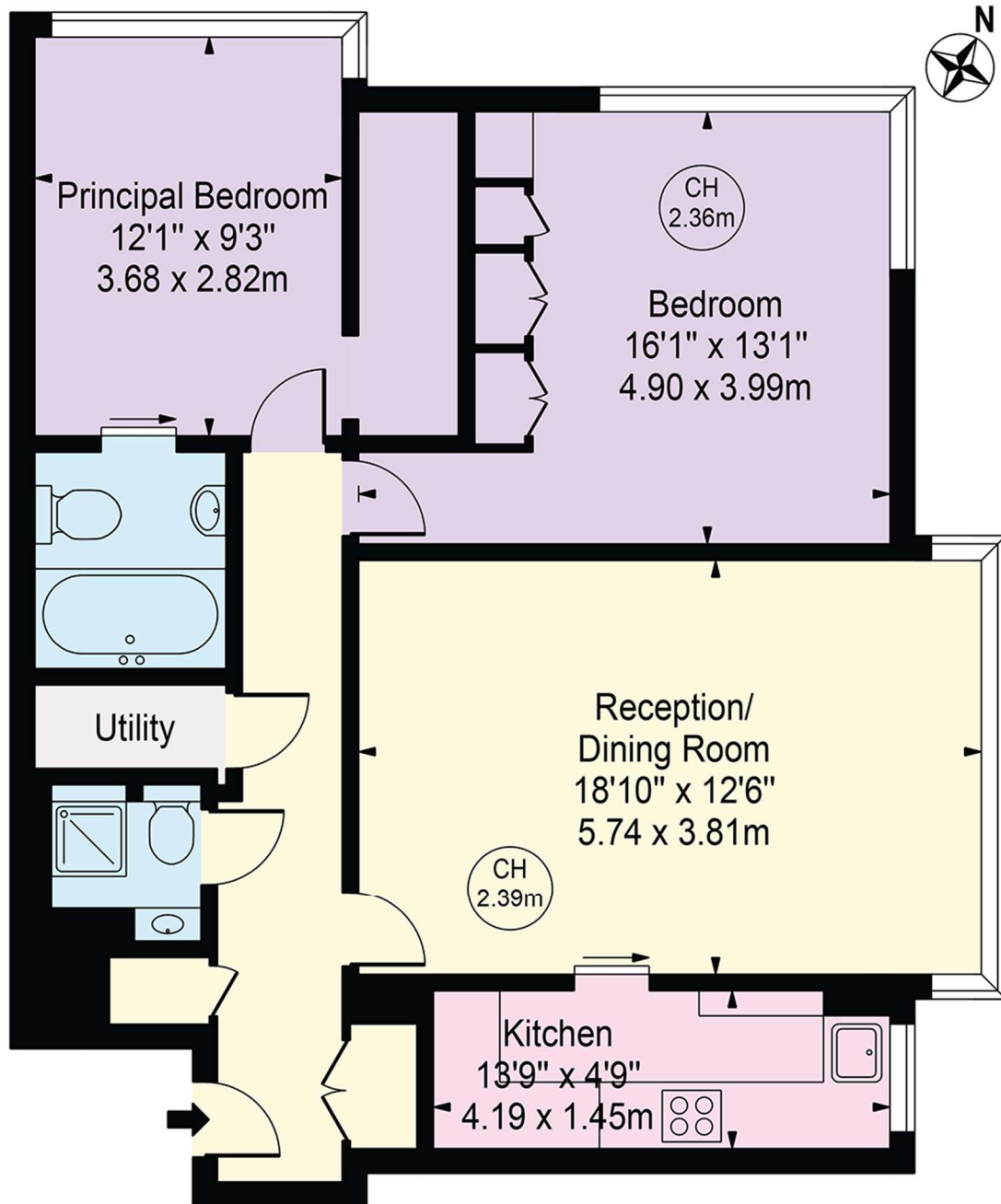
020 7262 2030
lettings.hydepark@bhhs-london.com



FLOORPLAN

Porchester Place

Approx. Gross Internal Area 833 Sq Ft - 77.39 Sq M



Eighteenth Floor

For Illustration Purposes Only - Not To Scale

This floor plan should be used as a general outline for guidance only and does not constitute in whole or in part an offer or contract. Any intending purchaser or lessee should satisfy themselves by inspection, searches, enquiries and full survey as to the correctness of each statement. Any areas, measurements or distances quoted are approximate and should not be used to value a property or be the basis of any sale or let.

Copyright Morriarti Photography & Design LTD