



Magnificent Two Bedroom Apartment

PORTSEA HALL

HYDE PARK ESTATE, W2

Asking Price
£925,000

**BERKSHIRE
HATHAWAY**
HOMESERVICES

LONDON

PROPERTY DETAILS

Guide Price
£925,000

Square Footage
820

Council Tax Band
E

EPC
D

Tenure
Leasehold

Service Charge
£5,600 pa

This bright dual aspect top floor apartment comes to the market in a stunning refurbished condition. Located in one of the areas most sought after buildings, it boasts a spacious open plan kitchen / living room area. Two large double bedrooms with built in storage along with two modern bathrooms.

Portsea Hall, is within walking distance to Hyde Park & Oxford Street, it also benefits from central line transport access at Marble Arch Station, along with Edgware Road Station only a short walk away.

FEATURES

Two Bedrooms

One Reception Room

Two Bathrooms

Concierge/Porter

Upper Floor

LOCATION

MAP INSERT HERE

HYDE PARK SALES

24-25 Albion Street, W2 2AX

020 7262 2030

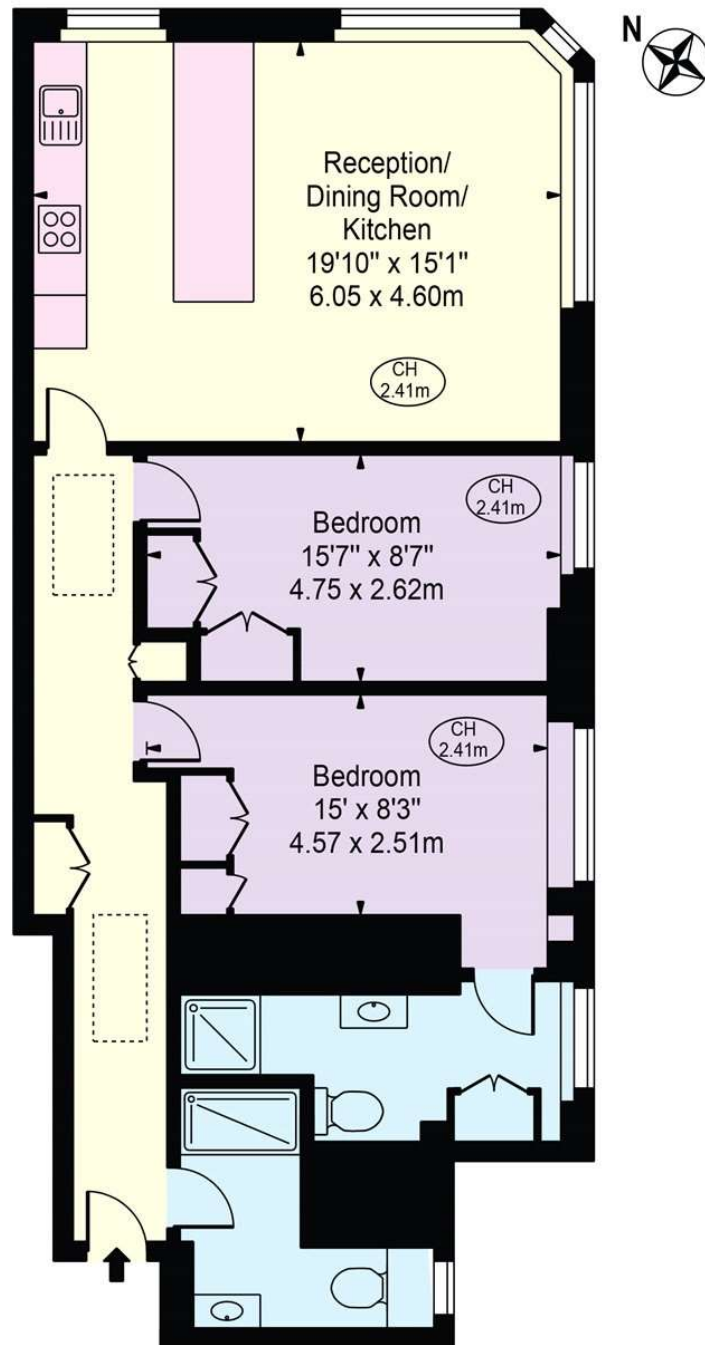
sales.hydepark@bhhs-london.com



FLOORPLAN

Portsea Hall

Approx. Gross Internal Area 868 Sq Ft - 80.64 Sq M



Seventh Floor

For Illustration Purposes Only - Not To Scale

This floor plan should be used as a general outline for guidance only and does not constitute in whole or in part an offer or contract. Any intending purchaser or lessee should satisfy themselves by inspection, searches, enquiries and full survey as to the correctness of each statement. Any areas, measurements or distances quoted are approximate and should not be used to value a property or be the basis of any sale or let.

Copyright Morriarti Photography & Design LTD