

Contemporary One Bedroom Apartment on Garden Square



Kensington Gardens Square

— BAYSWATER W2

- One Double Bedrooms
- 24 hr Porter
- Lift & Spacious Patio
- Fully Fitted Contemporary Kitchen
- 402 Sq Ft (approximately)
- EPC: D

£580 per week - (2,513.3 per month)

HYDE PARK & BAYSWATER
 LETTINGS

020 7262 2030

WWW.KAYANDCO.COM

Kensington Gardens Square

— BAYSWATER W2

A newly refurbished one bedroom apartment set within a prestigious Grade II listed residential building. Located on a popular garden square, this apartment boasts direct access to private patio in addition to access to the resident only garden square. Comprising; one double bedroom, one bathroom, a modern open plan reception to bespoke kitchen, which has been fully fitted with Miele appliances. The building hosts 24 hour security, lift and an emergency out of hours maintenance service.

LOCATION

Kensington Garden Square is set just behind the vibrant Westbourne Grove, home to an array of shops, restaurants and amenities. Excellent transport links are also within walking distance.

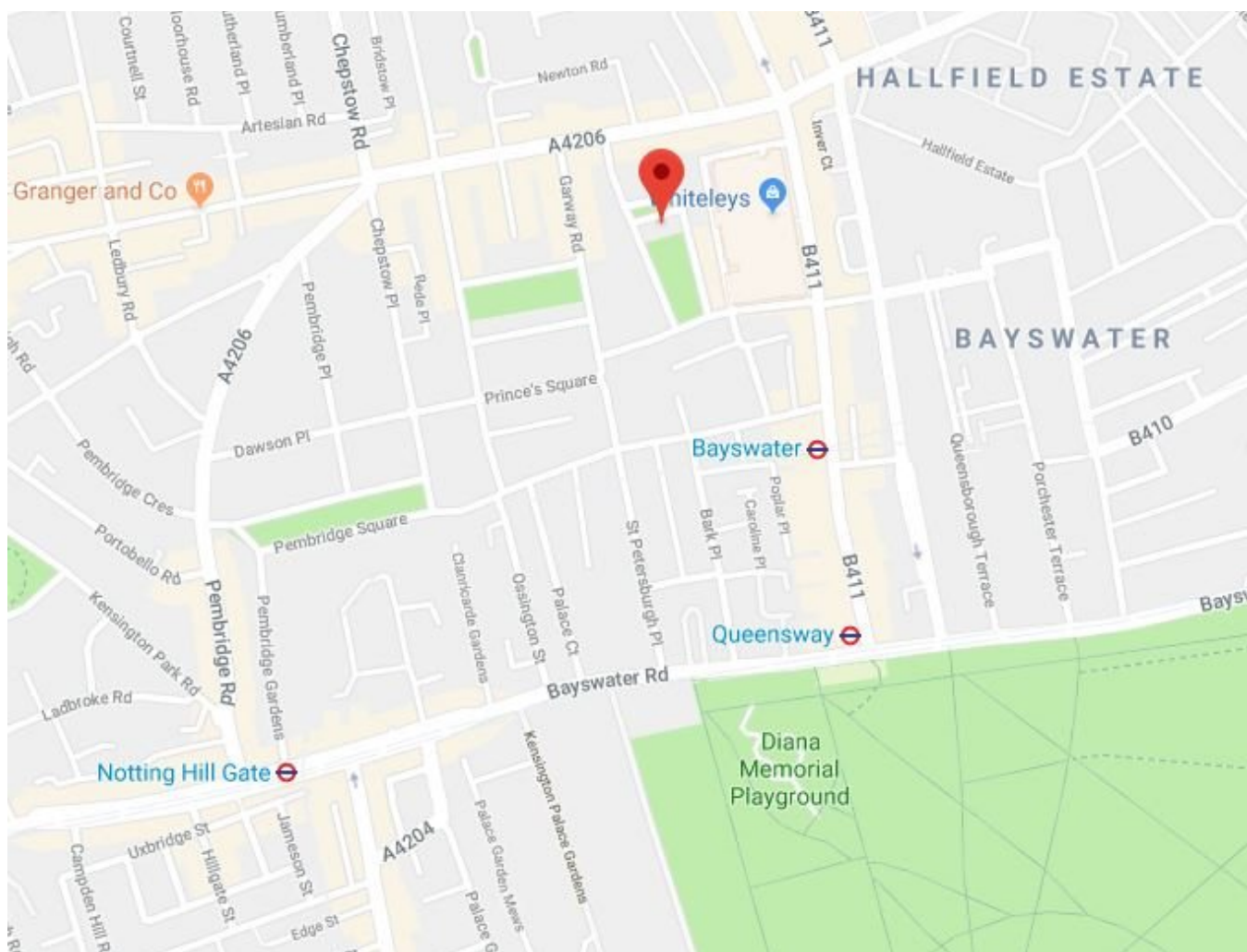
£580 per week - (2,513.3 per month)

HYDE PARK & BAYSWATER LETTINGS

24-25 ALBION STREET, LONDON, W2 2AX

020 7262 2030

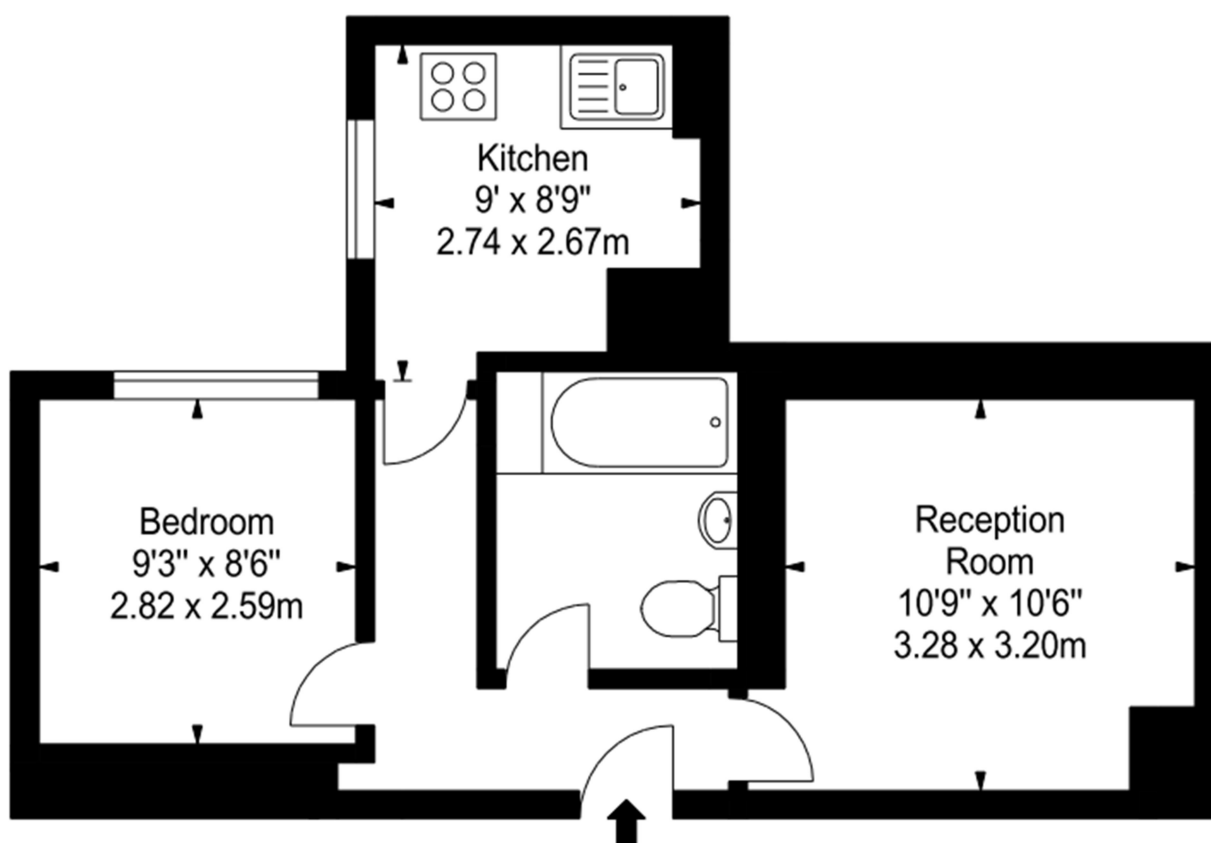
LETTINGS.HYDEPARK@KAYANDCO.COM





Flat B8, 86 - 92 Kensington Garden Square, W2

Approx. Gross Internal Area *
387 Ft² - 35.95 M²



Lower Ground Floor