



HYDE PARK STREET

HYDE PARK, W2

A GRAND HYDE PARK RESIDENCE

An extraordinary 5–6 bedroom home of rare scale and refinement, created by uniting three apartments into one magnificent residence. Spanning 4,400 sq ft, with soaring ceilings up to 3.76m, this south-facing property captures the grandeur of its period heritage while offering every modern luxury.

Guide Price £15,000,000	Square Footage 4,399 Sq Ft. Approx	Tenure Share of Freehold
Bedrooms 5-6 Bedrooms	Bathrooms 7 Bathrooms	Reception Rooms 4-5 Reception Rooms
Local Authority City of Westminster	Council Tax Band H	EPC Rating TBC

WHITE-STUCCO • VAST PRIVATE GARDENS • IMPECCABLY REFURBISHED



Experience the pinnacle of luxury living in this fully refurbished 5–6 bedroom residence, the inspired combination of three apartments into one exceptional home. Spanning approximately 4,400 sq ft, the property is south-facing and boasts magnificent reception rooms with ceilings reaching 3.65m, creating an immediate sense of grandeur.

Period elegance blends seamlessly with modern comfort, including air conditioning throughout, to deliver a home of rare quality.



The exterior of the property has a Blue Plaque commemorating bookseller and statesman (William Henry) W.H. Smith.



The ground floor features a grand reception room flowing into an elegant dining room and adjoining study. A further reception space, currently used as a breakfast room, connects to a beautifully appointed kitchen — all designed for generous and versatile living. Large windows and French doors throughout the principal rooms invite abundant natural light and provide seamless access to the terraces and gardens.



A sweeping staircase leads to the first floor, home to the exceptional principal suite with 3.76m ceilings, a superb dressing room with floor-to-ceiling wardrobes, and views towards Hyde Park. This level also includes an additional bedroom suite, a sitting room, and a private terrace.





The lower ground floor accommodates the remaining bedrooms, with the two largest opening onto a secluded courtyard through floor-to-ceiling windows and French doors, creating a particularly light and airy feel.





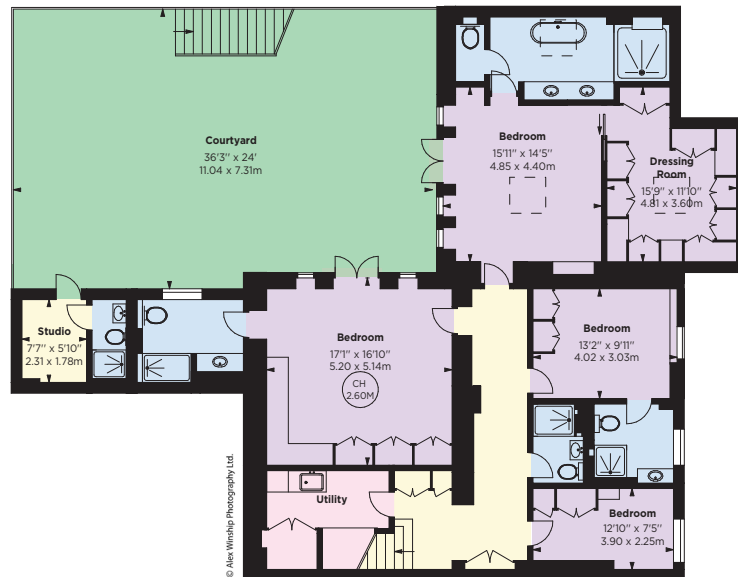
Outside, in addition to the courtyard, a mature and meticulously landscaped garden offers a tranquil retreat for relaxation or entertaining. Extending to approximately 3,165 sq ft, it is one of the largest private outdoor spaces in this part of London.

Approx. Gross Internal Area*
 4328 Sq Ft - 402.08 Sq M
 (Excluding Studio)

Approx. Studio Area*
 71 Sq Ft - 6.59 Sq M

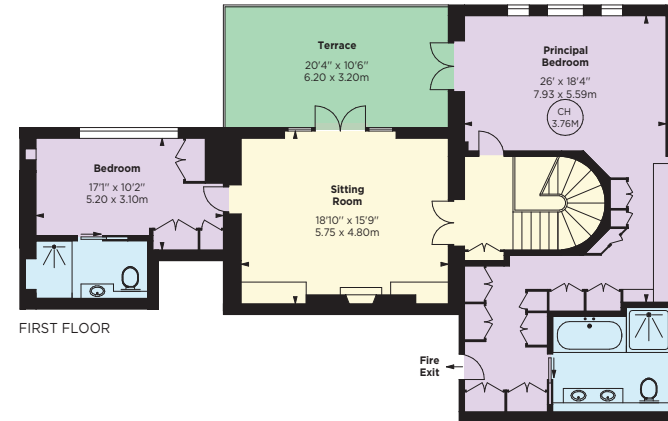
Total Approx Gross Internal Area*
 4399 Sq Ft - 408.68 Sq. M

Key :
 CH - Ceiling Height

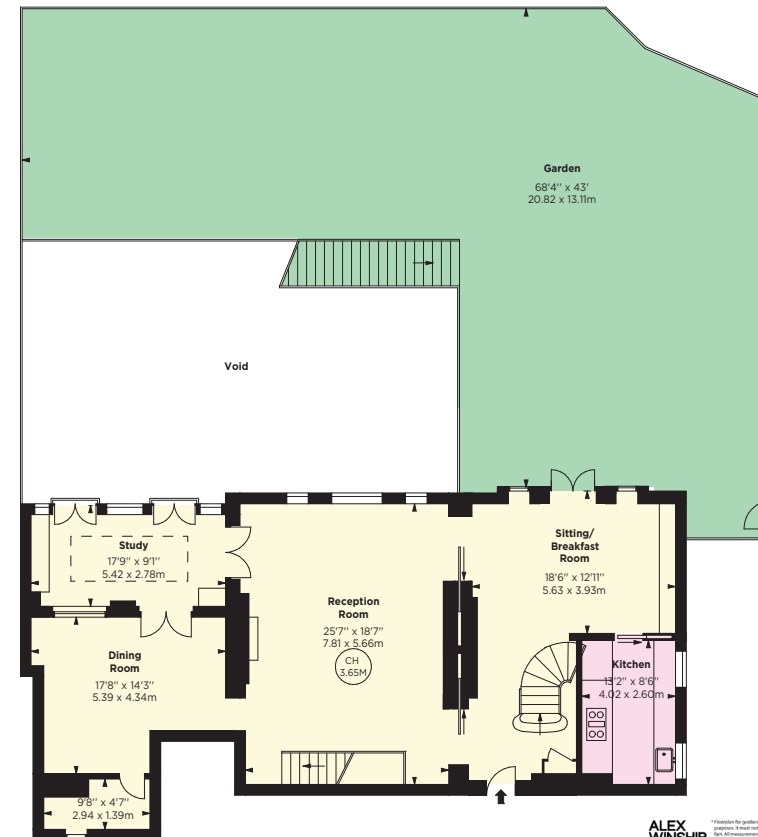


© Alex Winship Photography Ltd.

LOWER GROUND FLOOR



FIRST FLOOR



RAISED GROUND FLOOR



For further information or to arrange a viewing, please contact:

**BERKSHIRE
HATHAWAY** | LONDON
HOMESERVICES | PRIVATE OFFICE

MARTIN BIKHIT

+44 (0)20 7636 2000

+44 (0)7802 273 717

martin.bikhit@bhhs-london.com