



SOUTHWICK STREET

HYDE PARK ESTATE, W2

A Bright and Spacious Portered One Bedroom Apartment

£600 Per Week

£2,600 pcm

SOUTHWICK STREET

HYDE PARK ESTATE, W2

A bright one bedroom apartment located on the second floor of a popular portered building with lift access and further benefits from communal gardens. The property has excellent storage throughout, a family bathroom and a spacious semi-open plan kitchen leading into a large bright reception room.

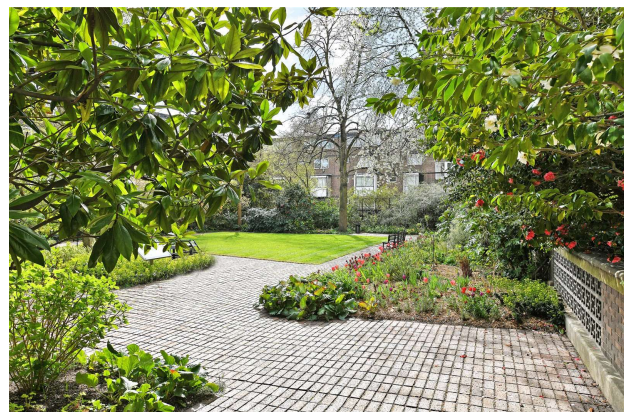
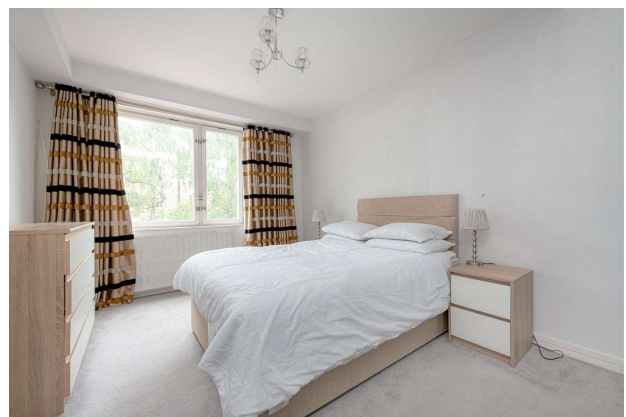
The property is well situated for the many amenities of the area, such as the boutiques shop and artisan bakeries of Connaught Village, the open spaces of Hyde Park and excellent transport links at Paddington & Marble Arch.

- Long Let
- One Bedroom
- One Reception Room
- One Bathroom
- Apartment
- Upper Floor
- Modern
- Concierge/Porter
- Lift
- Furnished
- 535 Sq Ft Approximately

COUNCIL TAX BAND: F

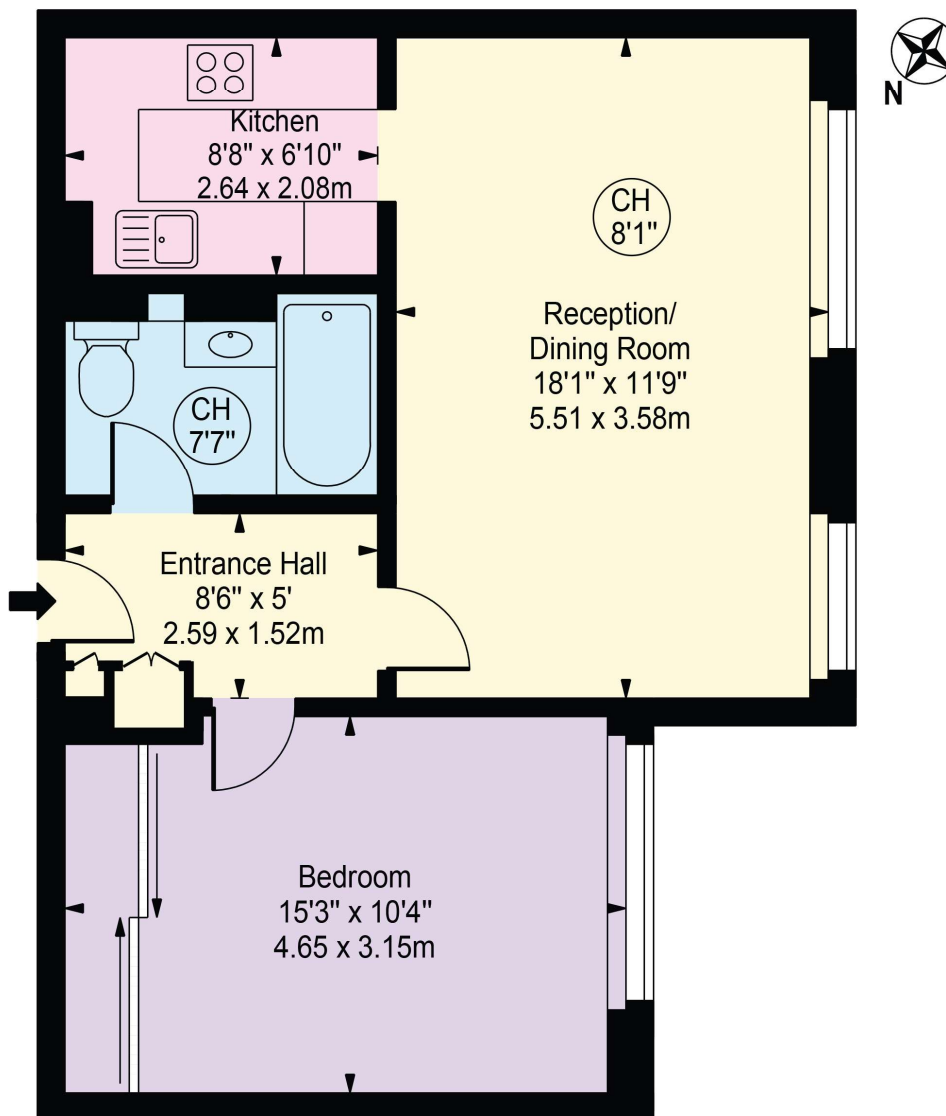
EPC RATING: C





Devonport

Approx. Gross Internal Area 535 Sq Ft - 49.70 Sq M



Second Floor

For Illustration Purposes Only - Not To Scale

This floor plan should be used as a general outline for guidance only and does not constitute in whole or in part an offer or contract. Any intending purchaser or lessee should satisfy themselves by inspection, searches, enquiries and full survey as to the correctness of each statement. Any areas, measurements or distances quoted are approximate and should not be used to value a property or be the basis of any sale or let.

Hyde Park & Bayswater
Lettings
24-25 Albion Street

020 7262 2030
lettings.hydepark@bhhsLondon.com
BHHSLondon.com

**BERKSHIRE
HATHAWAY**
HOMESERVICES
LONDON

Consumer Protection from Unfair Trading Regulations 2008. These details are for guidance only and complete accuracy cannot be guaranteed. If there is any point, which is of particular importance, verification should be obtained. They do not constitute a contract or part of a contract. All measurements are approximate. No guarantee can be given with regard to planning permissions or fitness for purpose. No apparatus, equipment, fixture or fitting has been tested. Items shown in photographs are NOT