



A Bright and Modern One Bedroom Apartment  
in the Heart of Connaught Village

# HYDE PARK SQUARE

HYDE PARK, W2

Guide Price  
£700,000

**BERKSHIRE  
HATHAWAY**  
HOMESERVICES

LONDON

# PROPERTY DETAILS

<b>Guide Price</b> £700,000	<b>Square Footage</b> 546
<b>Council Tax Band</b>	<b>EPC</b> C
<b>Ground Rent</b> £350 pa	<b>Service Charge</b> £7,460 pa
<b>Tenure</b> Leasehold 231 Years	

A first floor one bedroom apartment in this newly developed residential apartment building in Connaught Village in the heart of the Hyde Park Estate. 2 Hyde Park Square, located on the corner of Hyde Park Street and Connaught Street, is a luxurious residential development, offering 24 hour concierge. The contemporary design of the apartment creates a comfortable and inviting atmosphere, perfect for relaxing or entertaining guests. Situated in a prime Connaught Village, residents will enjoy easy access to local amenities, restaurants, and transport links. This location is a convenient short stroll to Marble Arch underground station (Central Line), the vibrant amenities of Oxford Street and the West End, as well as the extensive transport options of Paddington Station, including the Heathrow Express and Elizabeth Line.

## FEATURES

- One Bedroom
- One Reception Room
- One Bathroom
- Concierge / Porter
- 24 Hour Security
- Lift
- Communal Gardens

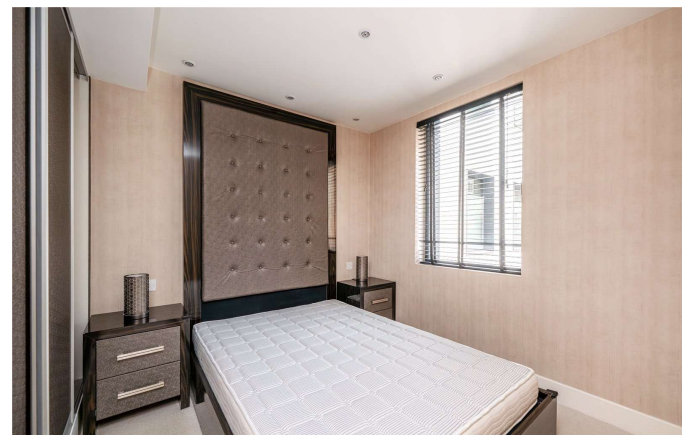
## LOCATION



**HYDE PARK SALES**  
24-25 Albion Street, W2 2AX

020 7262 2030  
sales.hydepark@bhhs-london.com

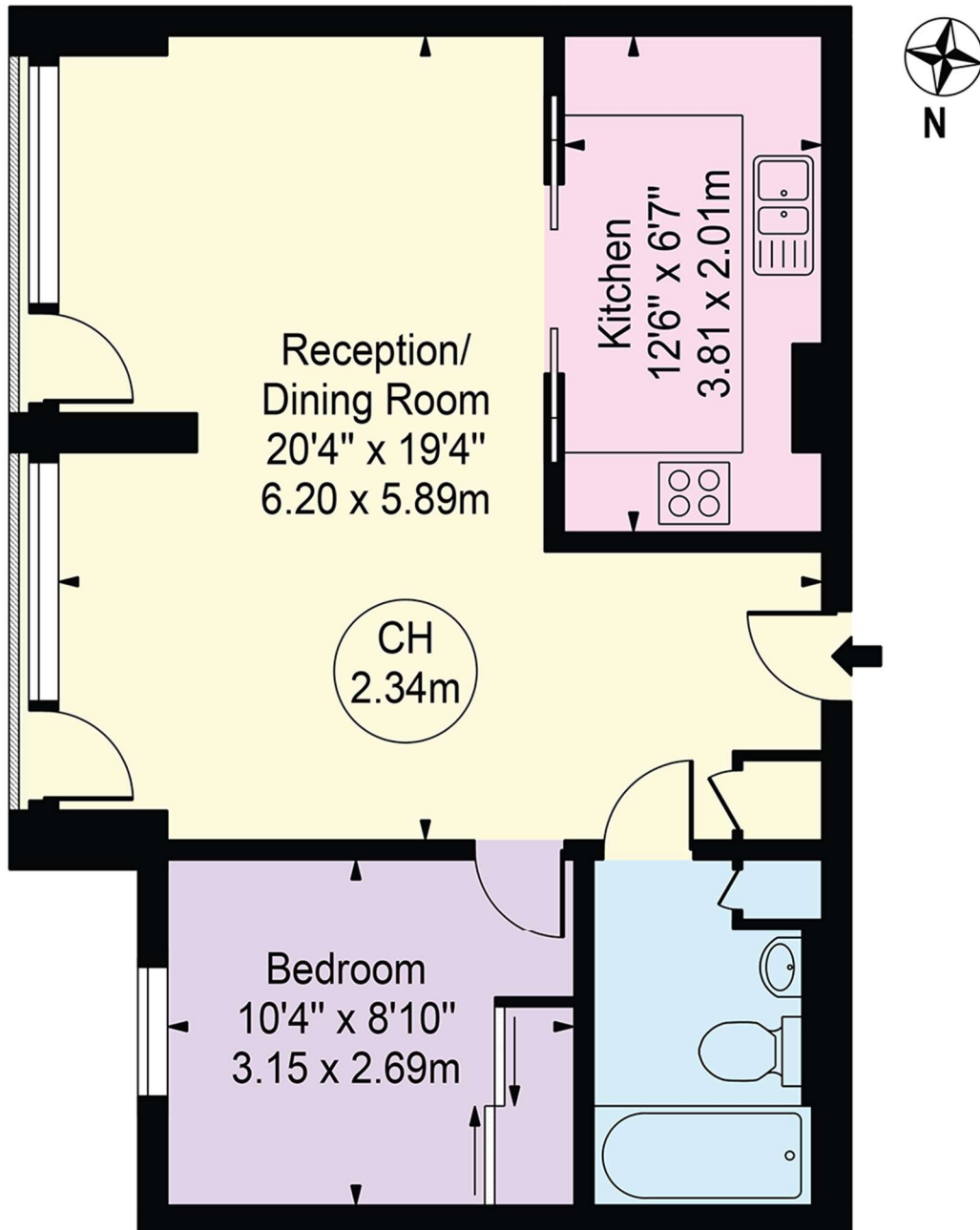




# FLOORPLAN

## Hyde Park Square

Approx. Gross Internal Area 547 Sq Ft - 50.82 Sq M



### First Floor

For Illustration Purposes Only - Not To Scale

This floor plan should be used as a general outline for guidance only and does not constitute in whole or in part an offer or contract. Any intending purchaser or lessee should satisfy themselves by inspection, searches, enquiries and full survey as to the correctness of each statement. Any areas, measurements or distances quoted are approximate and should not be used to value a property or be the basis of any sale or let.

Copyright Morriarti Photography & Design LTD