



PARK WEST

EDGWARE ROAD, W2

Delightful, Bright, Well Located One Bedroom Apartment

£585 Per Week

£2,535 pcm

PARK WEST

EDGWARE ROAD, W2

A wonderful apartment on the 9th floor, with lift, of this secure and well run purpose built apartment complex. The apartment is comprised of a spacious entrance hall, separate kitchen, reception room and a lovely double bedroom with ample storage. Well located for amenities in Connaught Village and nearby to Edgware Road.

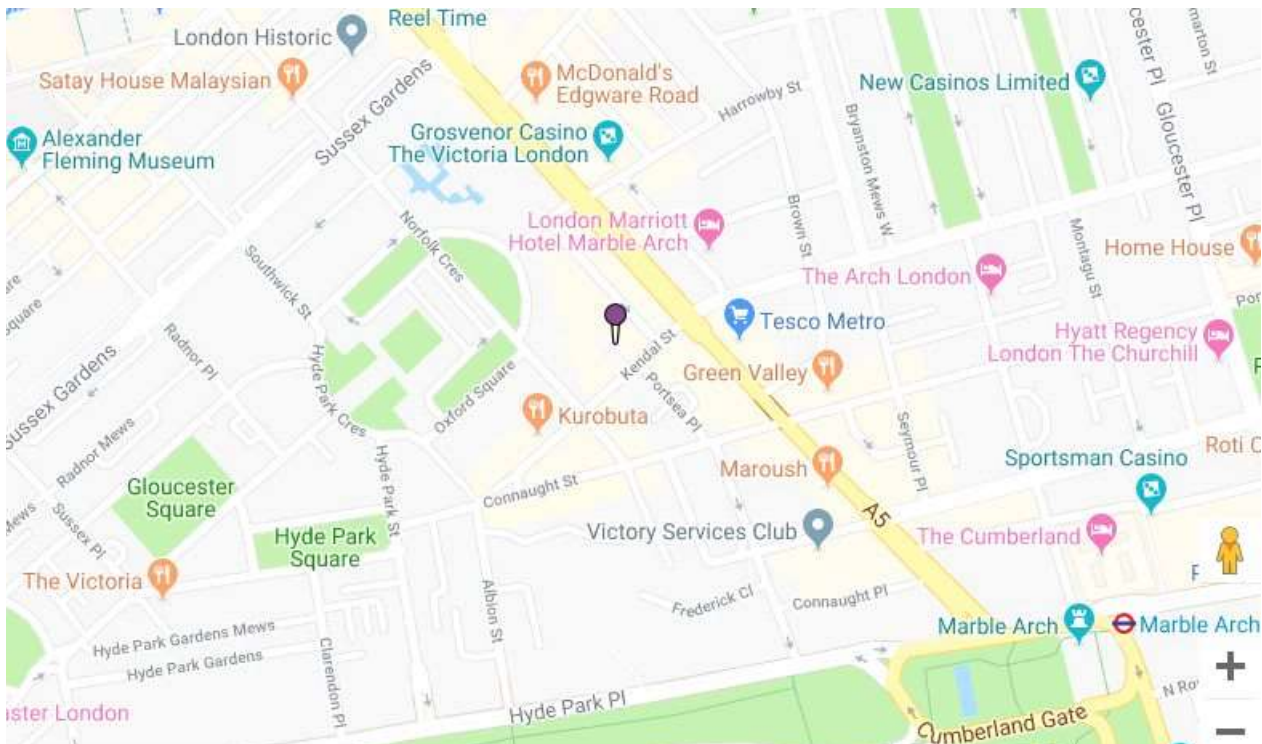
- Long Let
- One Bedroom
- One Reception Room
- One Bathroom
- Apartment
- Upper Floor
- Period
- Furnished
- Wooden Floors
- Bright and Spacious
- 571 Sq Ft Approximately

COUNCIL TAX BAND:

E

EPC RATING:

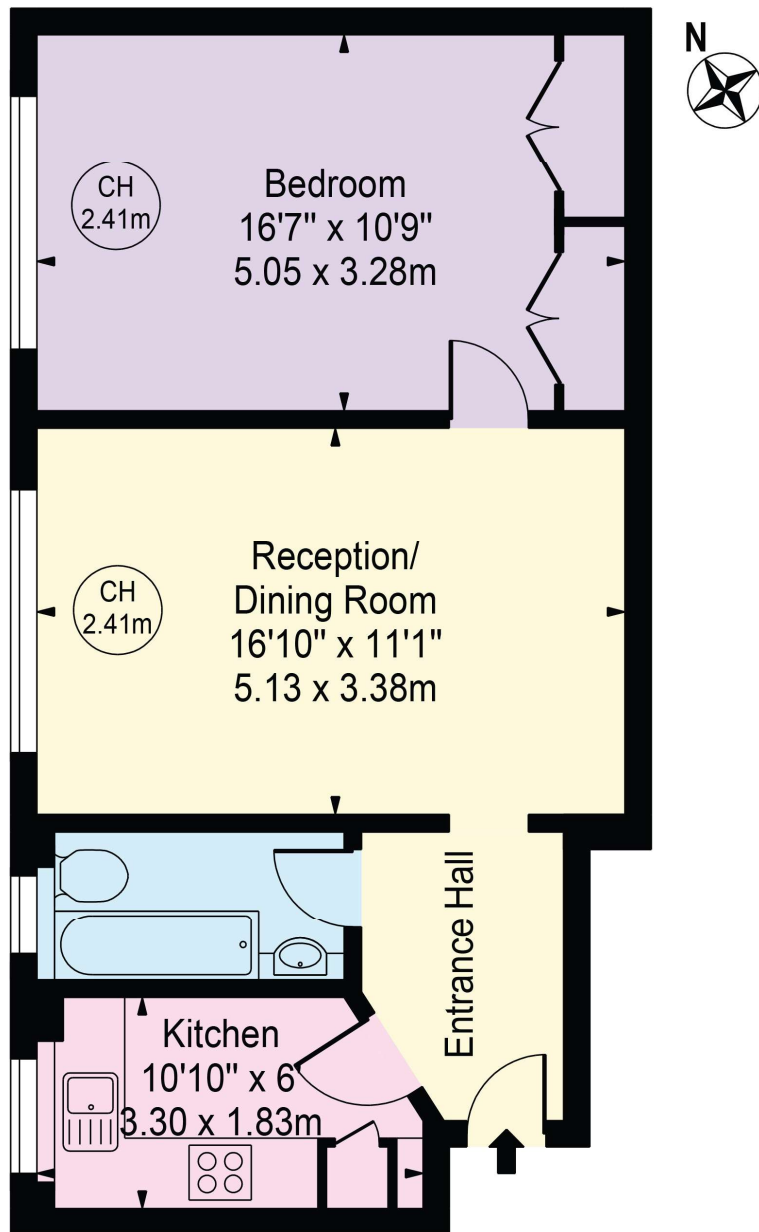
C





Park West

Approx. Gross Internal Area 571 Sq Ft - 53.05 Sq M



Ninth Floor

For Illustration Purposes Only - Not To Scale

This floor plan should be used as a general outline for guidance only and does not constitute in whole or in part an offer or contract. Any intending purchaser or lessee should satisfy themselves by inspection, searches, enquiries and full survey as to the correctness of each statement. Any areas, measurements or distances quoted are approximate and should not be used to value a property or be the basis of any sale or let.

Hyde Park & Bayswater
Lettings
24-25 Albion Street

020 7262 2030
lettings.hydepark@bhhs-london.com
BHHS-London.com

**BERKSHIRE
HATHAWAY**
HOMESERVICES
LONDON

Consumer Protection from Unfair Trading Regulations 2008. These details are for guidance only and complete accuracy cannot be guaranteed. If there is any point, which is of particular importance, verification should be obtained. They do not constitute a contract or part of a contract. All measurements are approximate. No guarantee can be given with regard to planning permissions or fitness for purpose. No apparatus, equipment, fixture or fitting has been tested. Items shown in photographs are NOT