



BERKSHIRE HATHAWAY
HomeServices
London Kay & Co



HYDE PARK MANSIONS

CABBELL STREET, NW1

Beautiful Lateral Apartment on First Floor of Mansion Block

£1,300 Per Week

£5,633.33 pcm

HYDE PARK MANSIONS

CABBELL STREET, NW1

This large and lateral apartment is arranged over the First Floor of a beautiful red brick mansion block in Marylebone.

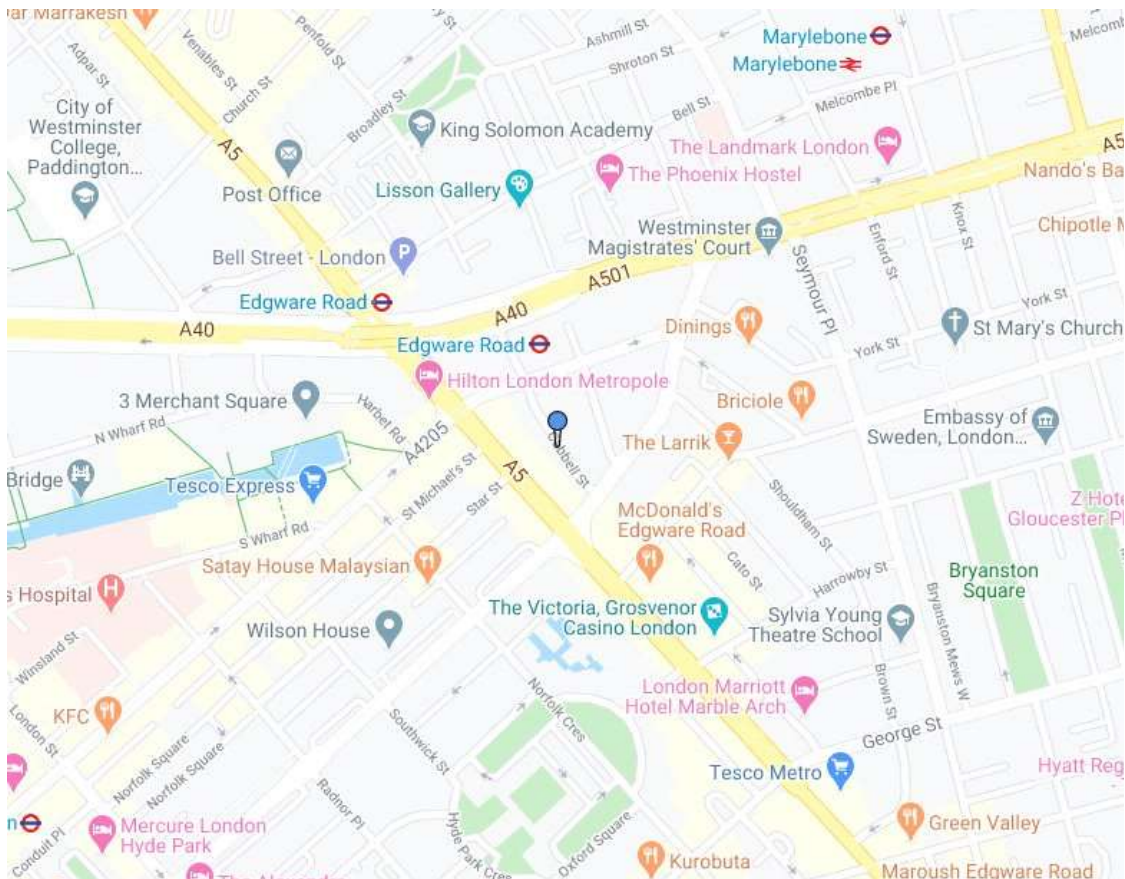
Entering into a spacious entrance hall, with an abundance of built in storage, which leads onto a large double reception room combined with a well-designed kitchen and spacious dining area flooded with natural light.

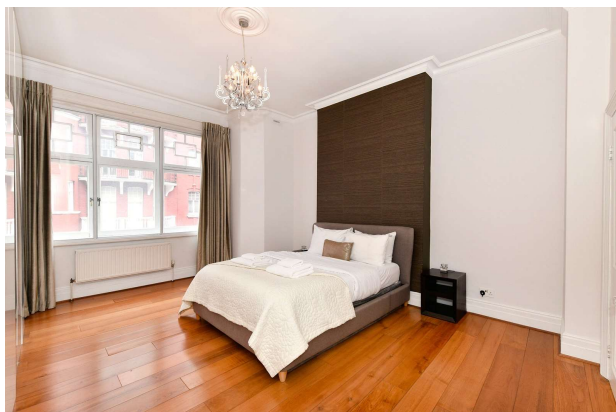
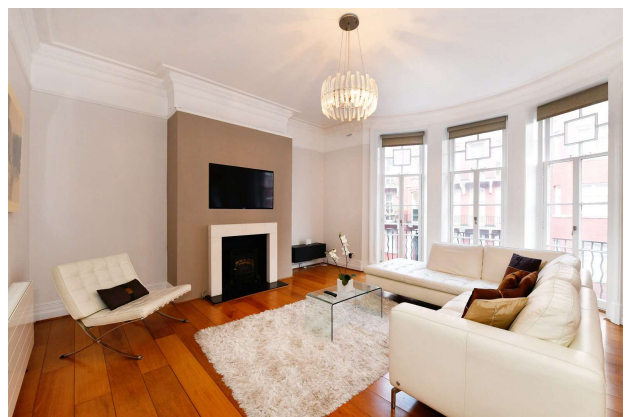
There are three double bedrooms and two bathrooms. The property has wooden floors throughout, high ceilings and many original period features.

Transport access can be found at Edgware Road, Marylebone, and Baker Street stations. Local eateries and coffee shops can also be found close by in Marylebone Village and Edgware Road.

- Three Bedrooms
- Two Reception Rooms
- Two Bathrooms
- Lateral First Floor Apartment
- Furnished
- 1639 Sq Ft Approximately

EPC RATING: **D**

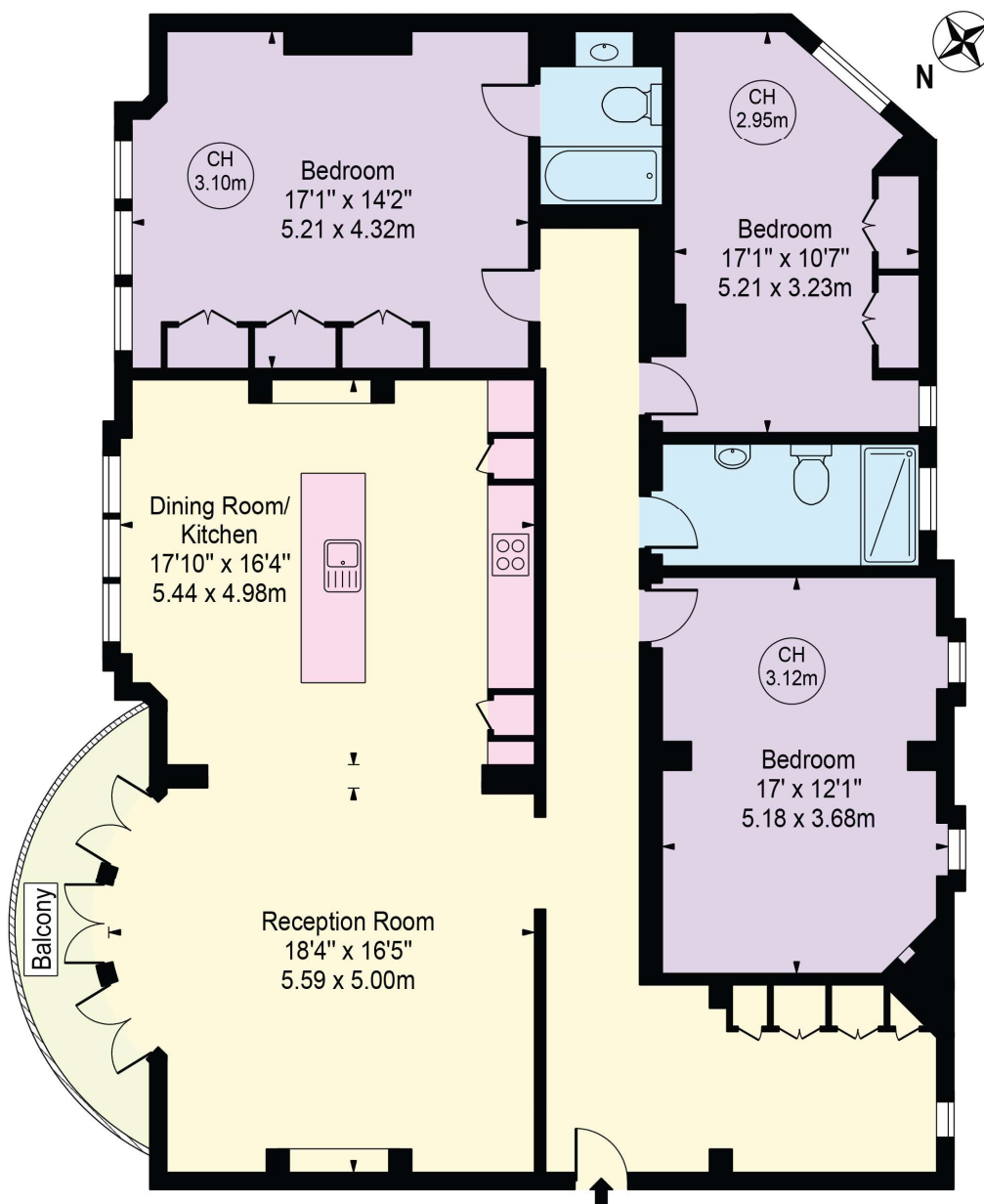




Hyde Park Mansions

Approx. Gross Internal Area 1639 Sq Ft - 152.27 Sq M

Approx. External Area Of Balcony 58 Sq Ft - 5.39 Sq M



First Floor

For Illustration Purposes Only - Not To Scale

This floor plan should be used as a general outline for guidance only and does not constitute in whole or in part an offer or contract. Any intending purchaser or lessee should satisfy themselves by inspection, searches, enquiries and full survey as to the correctness of each statement. Any areas, measurements or distances quoted are approximate and should not be used to value a property or be the basis of any sale or let.

Marylebone & Regents Park

Lettings

20a Paddington Street

020 7486 6338

lettings.marylebone@bhhsLondon.com

BHHSLondon.com



BERKSHIRE HATHAWAY

HomeServices

London Kay & Co

Consumer Protection from Unfair Trading Regulations 2008. These details are for guidance only and complete accuracy cannot be guaranteed. If there is any point, which is of particular importance, verification should be obtained. They do not constitute a contract or part of a contract. All measurements are approximate. No guarantee can be given with regard to planning permissions or fitness for purpose. No apparatus, equipment, fixture or fitting has been tested. Items shown in photographs are NOT necessarily included. Interested Parties are advised to check availability and make an appointment to view before travelling to see a property.