



A Modern Studio Apartment in Central Location

CARTWRIGHT GARDENS

— BLOOMSBURY, WC1H

- Studio Flat
- Bathroom
- Kitchen
- Furnished
- Communal Gardens
- 24-Hour Concierge
- 197 Sq Ft Approximately
- EPC Rating: C

KINGS CROSS LETTINGS

Unit 4, 6 Pancras Square, London, N1C 4AG

0207 467 2020

lettings.kingscross@kayandco.com

kayandco.com

£420 p/w (£1,820 pcm)

CARTWRIGHT GARDENS

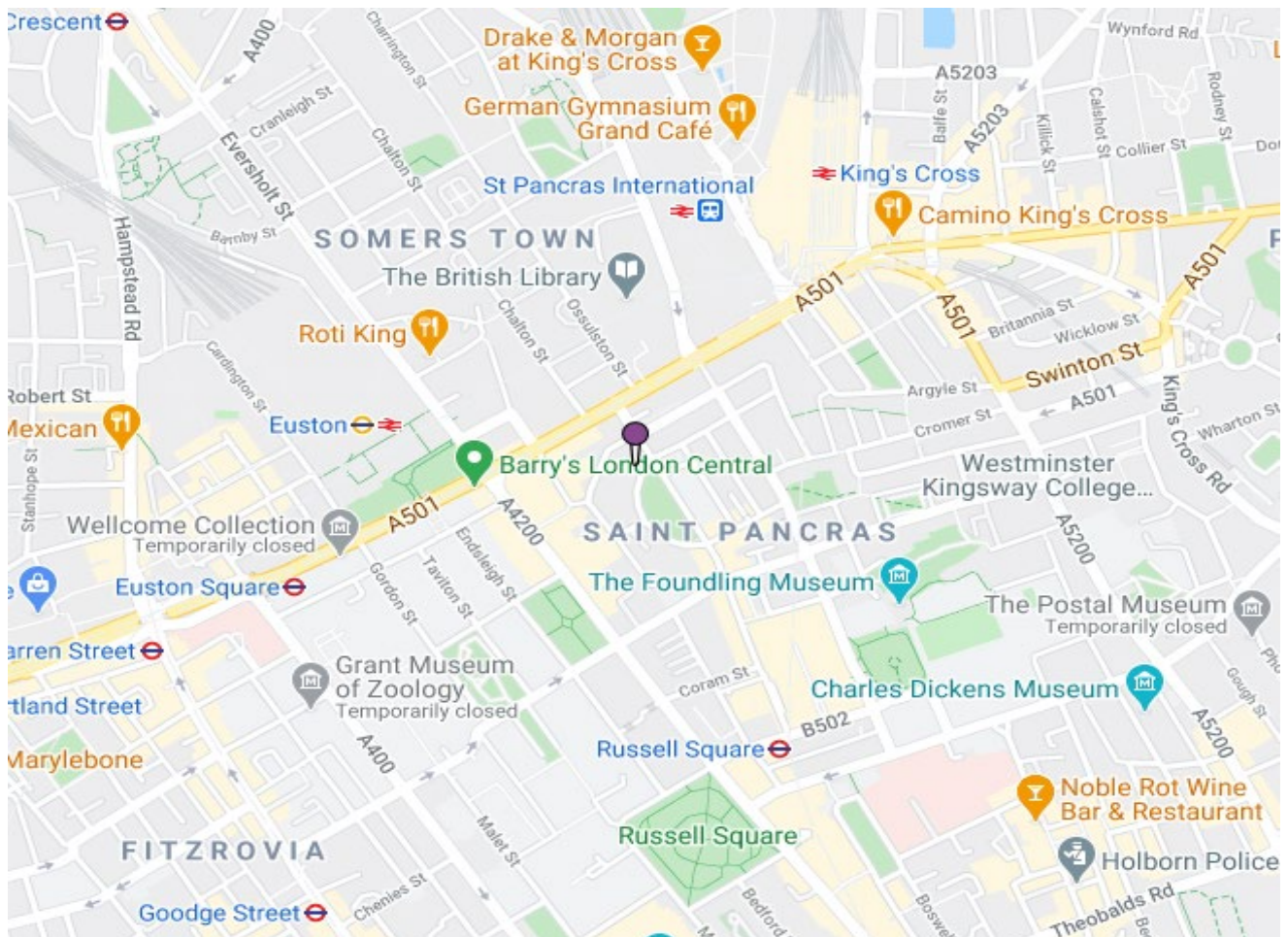
– BLOOMSBURY, WC1H

A selection of modern studio apartments that have recently been refurbished to a high standard. Located on an attractive garden square, these self-contained studio apartments are a 5 minute walk from Russell Square, King's Cross St Pancras International and Euston, offering residents a vast range of transport links. Residents also benefit from fast fibre optic WIFI, air conditioning and use of shared landscaped gardens.

The studios consist of a fully fitted kitchen, en-suite bathroom, double bed and storage facilities, making them ideal for anyone needing a City base. The rent also includes electricity, water and heating. These are available immediately and all come fully furnished.

£420 p/w (£1,820 p c m)

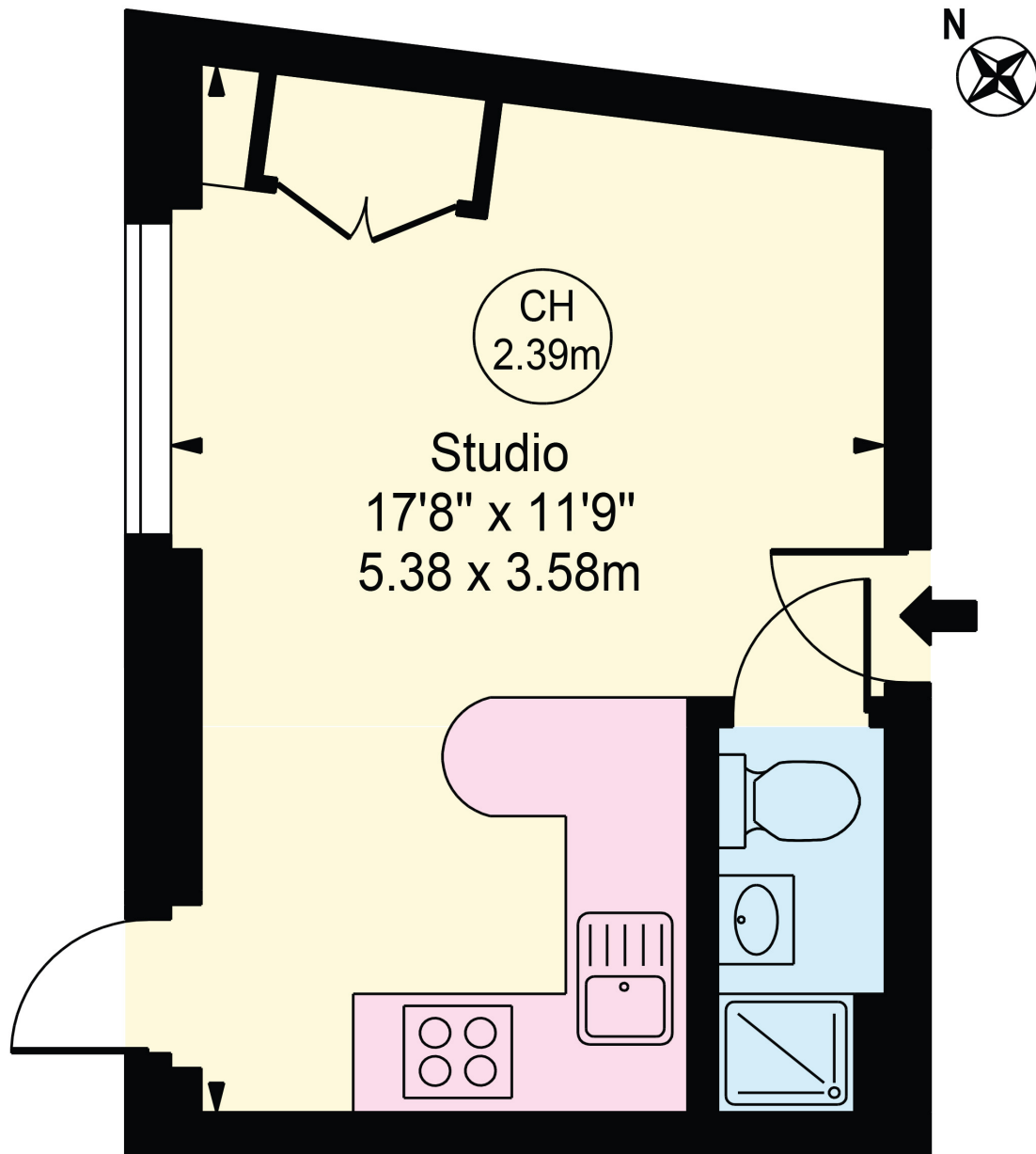
EPC RATING - C





Cartwright Gardens

Approx. Gross Internal Area 197 Sq Ft - 18.30 Sq M



Lower Ground Floor

For Illustration Purposes Only - Not To Scale

This floor plan should be used as a general outline for guidance only and does not constitute in whole or in part an offer or contract. Any intending purchaser or lessee should satisfy themselves by inspection, searches, enquiries and full survey as to the correctness of each statement. Any areas, measurements or distances quoted are approximate and should not be used to value a property or be the basis of any sale or let.