

## An Immaculately Presented Three Bedroom Apartment.

### WHITEHALL PLACE

CHARING CROSS –SW1A

- Reception Room and Study
- Kitchen
- Dining Room
- Main Bedroom Suite with Dressing Room
- Second Bedroom with En Suite Bathroom
- Third Guest Bedrooms with En Suite
- Family Bathroom
- Utility Room
- Cloakroom
- Lift
- 24 Hour Porter - Car Parking
- 2,971 Sq Ft Approximately
- EPC Rating: C

#### MARYLEBONE & REGENTS PARK LETTINGS

20a Paddington Street, London, W1U 5QP

**020 7486 6338**

[lettings.marylebone@bhhs-london.com](mailto:lettings.marylebone@bhhs-london.com)

[BHHSLondon.com](http://BHHSLondon.com)

**£7,000 p/w** (£30,333.33 pcm)

# WHITEHALL PLACE

– SW1A

A beautifully interior designed lateral apartment of 2,917 square foot situated within the Corinthia Residences, offering unique access to the hotel and all its services.

10 Whitehall Place promises a lifestyle of comfortable privilege. Along with a prestigious address, voluminous space and uncompromising quality, the palatial apartments provide access to the services of the adjoining Corinthia Hotel. The Corinthia is now the prestigious setting for a unique collection of apartments. Situated near the River Thames, Ministries of State and the official home of the British Prime Minister.

Known as London's 21st Century Grand Hotel, the Corinthia features two restaurants led by multi Michelin-starred Executive Chef Garry Hollihead and a spa recently voted London's leading hotel spa by the

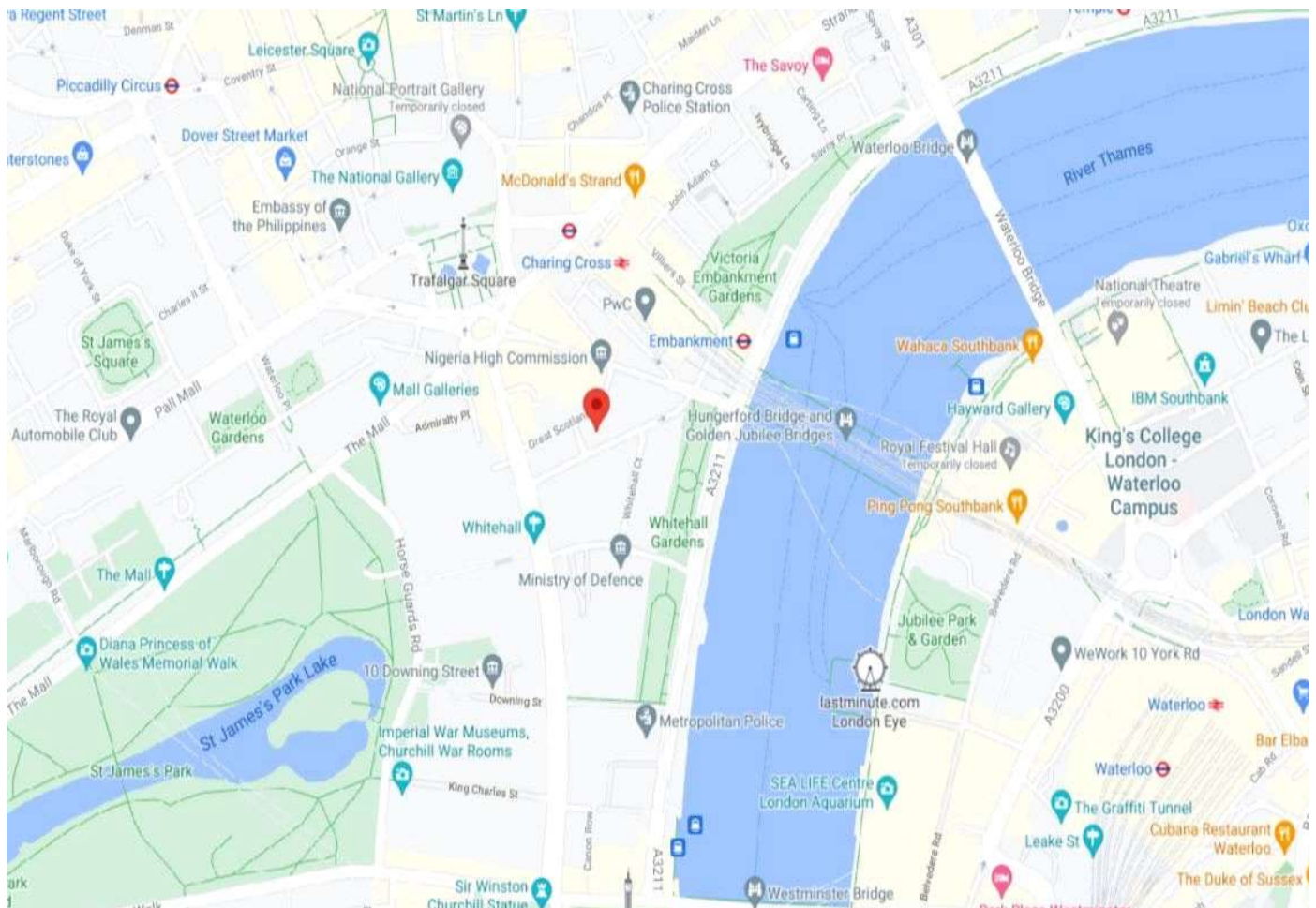
readers of Condé Nast Traveller. Residents of 10 Whitehall Place have a private entrance to ESPA Life at Corinthia and a direct line to the Concierge with 24/7 room service.

To inspire owners and illustrate the potential, Apartment 8 has been professionally designed featuring bespoke furniture and furnishings, this three-bedroom residence has an impressive aura of calm, sophisticated luxury.

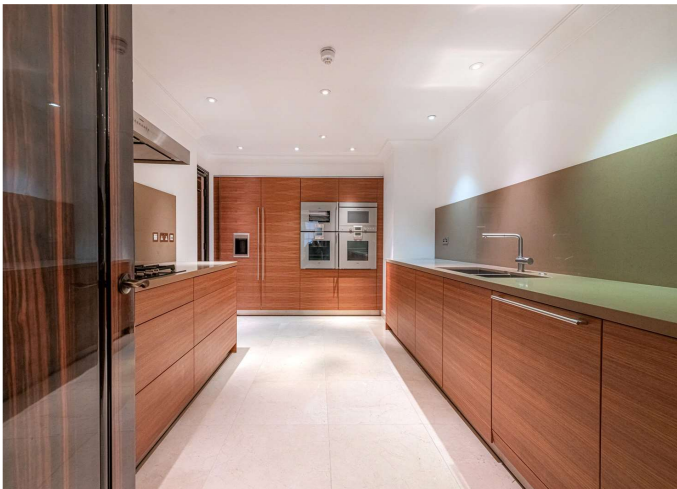
The apartment features a bright spacious reception room, three luxurious bedrooms with high ceilings throughout. All the doors are constructed from ebonised Macassar, highly polished to produce a mirror-like sheen. The floors are constructed from fumed, straight-grained oak or covered in deep-pile silk carpets.

**£7,000 p/w** (£ 3 0 , 3 3 3 . 3 3 p c m )

**EPC RATING - D**







©2020 BHH Affiliates, LLC. An independently owned and operated franchisee of BHH Affiliates, LLC. Berkshire Hathaway HomeServices and the Berkshire Hathaway HomeServices symbol are registered service marks of Columbia Insurance Company, a Berkshire Hathaway affiliate.® Berkshire Hathaway HomeServices Kay & Co is a trading name of Oastcrown Properties Limited. Registered in England No. 1647019. Registered Office: 24-25 Albion Street, London W2 2AX. Authorized and regulated by the Financial Conduct Authority. A member of the franchise system of BHH Affiliates, LLC. Consumer Protection from Unfair Trading Regulations 2008. These details are for guidance only and complete accuracy cannot be guaranteed. If there is any point, which is of particular importance, verification should be obtained. They do not constitute a contract or part of a contract. All measurements are approximate. No guarantee can be given with regard to planning permissions or fitness for purpose. No apparatus, equipment, fixture or fitting has been tested. Items shown in photographs are NOT necessarily included. Interested Parties are advised to check availability and make an appointment to view before travelling to see a property.

## Corinthia Residences

Approx. Gross Internal Area 2971 Sq Ft - 276.01 Sq M



Fourth Floor

For Illustration Purposes Only - Not To Scale

This floor plan should be used as a general outline for guidance only and does not constitute in whole or in part an offer or contract. Any intending purchaser or lessee should satisfy themselves by inspection, searches, enquiries and full survey as to the correctness of each statement. Any areas, measurements or distances quoted are approximate and should not be used to value a property or be the basis of any sale or let. Copyright Morriarti Photography & Design LTD



**BERKSHIRE  
HATHAWAY**  
HomeServices

London  
Kay & Co  
Marler & Marler