



SMART STUDIO APARTMENT IN KNIGHTSBRIDGE

BASIL STREET

KNIGHTSBRIDGE, SW3

£600 per week

**BERKSHIRE
HATHAWAY**
HOMESERVICES

LONDON

PROPERTY DETAILS

Guide Price £600 per week	Square Footage 375
Council Tax Band E	EPC Rating D

A large studio apartment in this period mansion building in the heart of Knightsbridge.

The apartment features wood flooring throughout, double bed, living area, shower room and ample storage. Day time porter.

Well positioned for all the shops and restaurants in Knightsbridge and a short walk from the Piccadilly underground station.

FEATURES

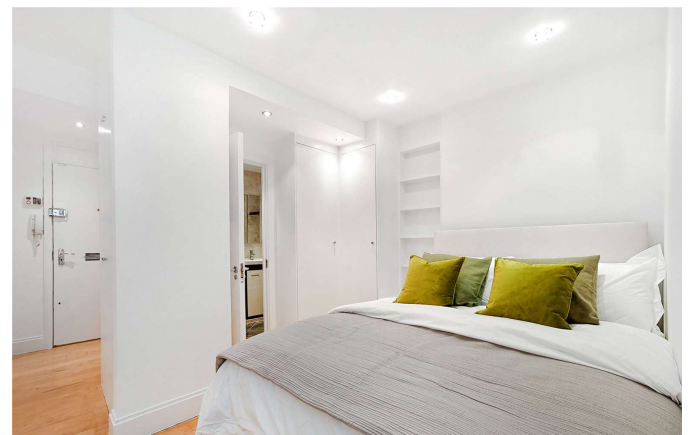
Studio
One Reception Room
One Bathroom
Residents Parking
Furnished
Wood Flooring
Concierge/ Porter

LOCATION



KNIGHTSBRIDGE LETTINGS
55-57 SLOANE AVENUE, SW3 3DH

020 7235 9641
lettings.knightsbridge@bhhs-london.com

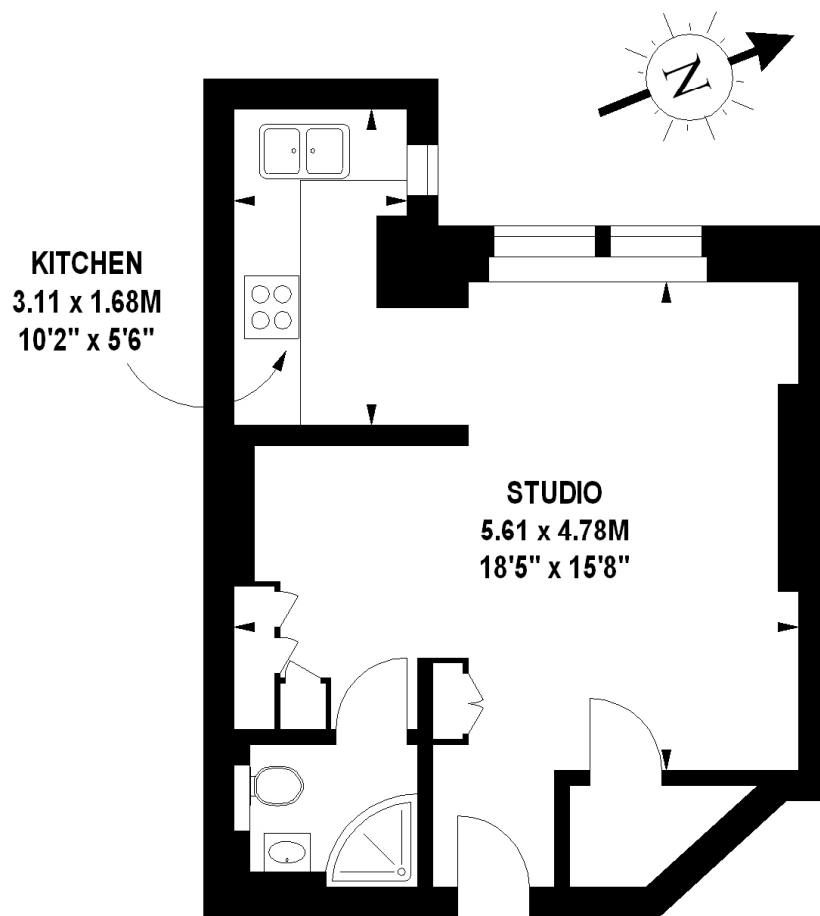


FLOORPLAN

Jefferson House, SW3

Approximate gross internal area

34.84 sq m / 375 sq ft



Lower Ground Floor

The floor plan is not to scale and measurements and areas shown are approximate and therefore should be used for illustrative purposes only.

The plan been prepared in accordance with the RICS code of Measuring Practice and whilst we have confidence in the information produced, it must be not be relied on.

If there is any aspect of particular importance, you should carry out or commission your own inspection of the property.

Copyright of FeaturePRO.