



Modern Two Bedroom Apartment on the Kings Road

# KINGS ROAD

CHELSEA, SW3

£1,061 per week

**BERKSHIRE  
HATHAWAY**  
HOMESERVICES

LONDON

# PROPERTY DETAILS

<b>Guide Price</b> £1,061 per week	<b>Square Footage</b> 860	<p>A beautifully presented two-bedroom, two-bathroom apartment to rent in Chelsea, set on the second floor of a secure modern gated development just off the King's Road near Sydney Street.</p> <p>Offering approximately 860 sq ft of living space, the apartment comprises a bright reception room, a contemporary fitted kitchen, and two well-proportioned bedrooms, all finished to a high standard.</p> <p>Further benefits include air cooling throughout and access to landscaped communal gardens, providing a rare sense of peace and greenery in the heart of Chelsea.</p> <p>Ideally located within easy walking distance of Sloane Square and South Kensington Underground stations, as well as the boutiques, cafés and restaurants of the King's Road and Fulham Road, this furnished Chelsea flat combines modern living with one of London's most desirable addresses.</p>
<b>Council Tax Band</b> F	<b>EPC Rating</b> C	

# FEATURES

Two Bedrooms
One Reception Room
Two Bathrooms
Communal Gardens
Furnished
Upper Floor
Wood Flooring

# LOCATION



**KNIGHTSBRIDGE LETTINGS**  
55-57 SLOANE AVENUE, SW3 3DH

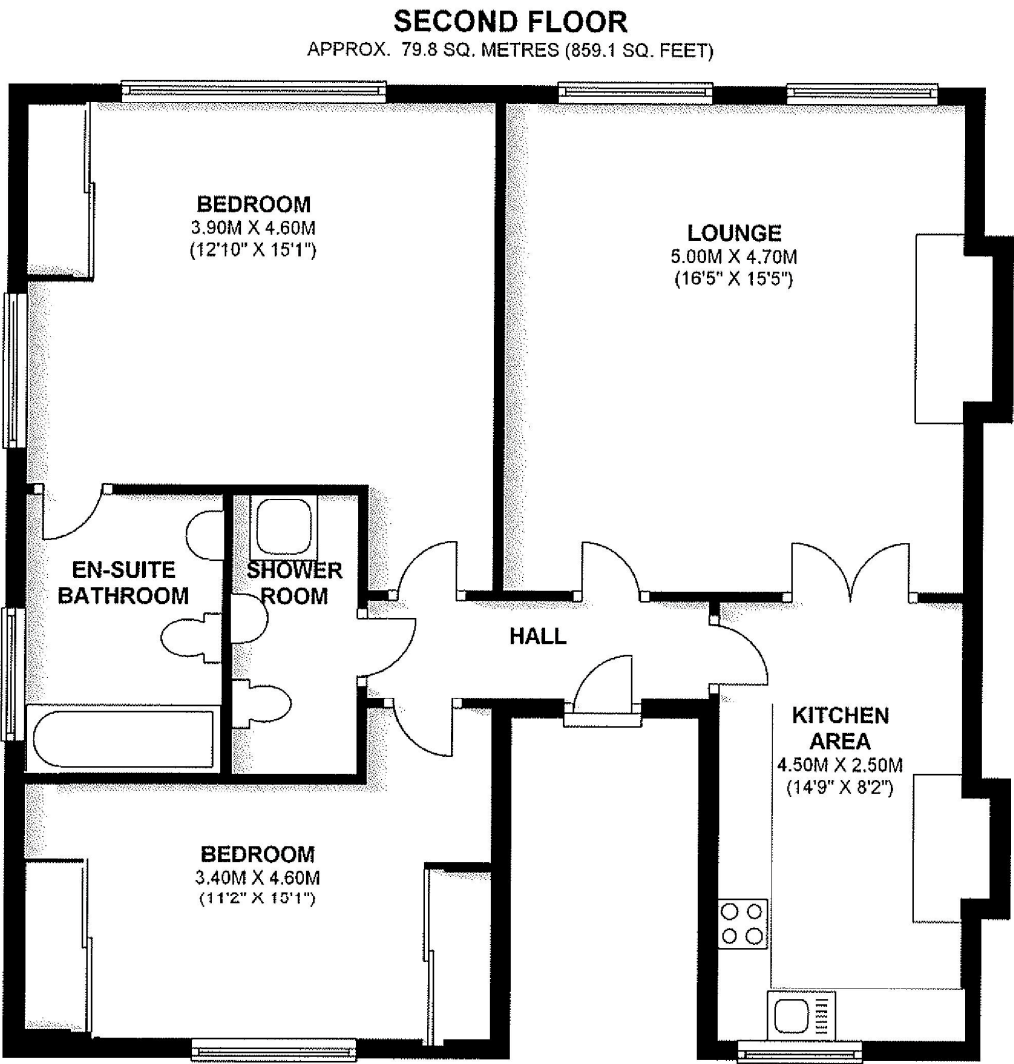
020 7235 9641  
lettings.knightsbridge@bhhs-london.com





# FLOORPLAN

FLAT 3 | 203 KINGS ROAD | | LONDON | | SW3 5ED



TOTAL AREA: APPROX. 79.8 SQ. METRES (859.1 SQ. FEET)