



AN IMMACULATE APARTMENT WITH CONCIERGE AND
VALET PARKING

BROMPTON PLACE

KNIGHTSBRIDGE, SW3

Asking Price
£2,600,000

**BERKSHIRE
HATHAWAY**
HOMESERVICES

LONDON

PROPERTY DETAILS

Guide Price
£2,600,000

Square Footage
982

Council Tax Band
H

EPC
E

Tenure
Share of Freehold

Service Charge
£14800

A well-proportioned apartment on the first floor of this exclusive modern development adjacent to Harrods. Having its own terrace, 24 hour concierge and a valeted underground parking space, the property is the ultimate in luxury and convenience. Extending to 982 Sq Ft and with wood flooring throughout, the apartment is also fully air conditioned.

Harrods Court is located in Brompton Place, a quiet cul-de-sac off the Brompton Road in the very heart of Knightsbridge. As well as being next door to Harrods itself, it offers easy access to all the other local amenities, including being walking distance to Hyde Park.

** Furniture has been virtually staged in some images

FEATURES

Two Bedrooms

One Reception Room

Two Bathrooms

Concierge/ Porter

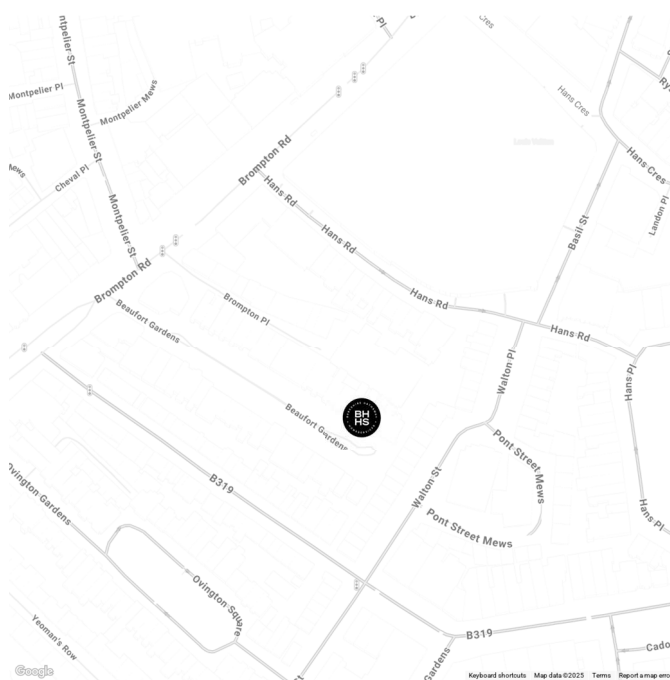
Parking

24 Hour Security

Roof Terrace

Lift

LOCATION

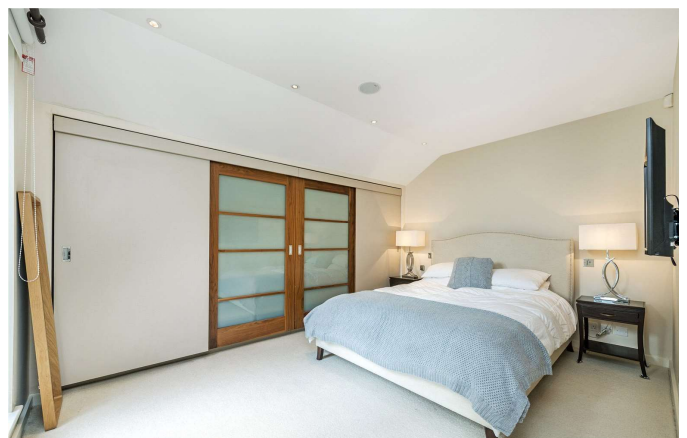


KNIGHTSBRIDGE SALES

55-57 SLOANE AVENUE, SW3 3DH

020 7235 9641

sales.knightsbridge@bhhs-london.com

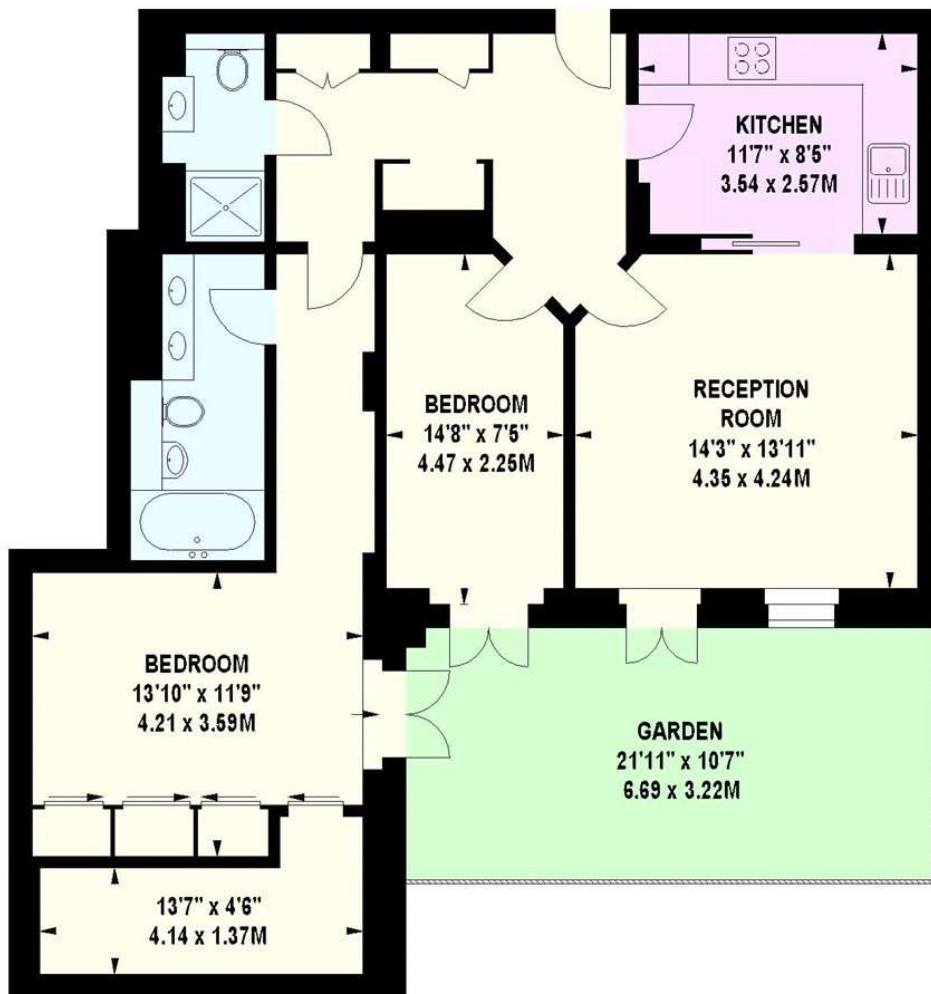


FLOORPLAN

Harrods Court, SW3

Approximate gross internal area

982 sq ft / 91.23 sq m



First Floor

The floor plan is not to scale and measurements and areas shown are approximate and therefore should be used for illustrative purposes only.

The plan has been prepared in accordance with the RICS code of Measuring Practice and whilst we have confidence in the information produced, it must not be relied on.

If there is any aspect of particular importance, you should carry out or commission your own inspection of the property.

Copyright of FeaturePRO.