



Three Bedroom with Roof Terrace in Prime King's Cross

# LEWIS CUBITT WALK

KING'S CROSS, N1C

Asking Price  
£2,550,000

**BERKSHIRE  
HATHAWAY**  
HOMESERVICES

LONDON

# PROPERTY DETAILS

<b>Guide Price</b> £2,550,000	<b>Square Footage</b> 1103
<b>Council Tax Band</b> TBC	<b>EPC</b> B
<b>Ground Rent</b> £1000 pa	<b>Service Charge</b> £18,909 pa
<b>Tenure</b> Leasehold	

A spacious three bedroom apartment with roof terrace and balcony in the highly sought after and award winning Luma House.

Every element in this boutique development is designed to a high specification, with generous ceilings to maximise natural light and full height windows. In addition to the charming balcony leading off the spacious kitchen and reception there is a roof terrace in excess of 600 square feet with views over Lewis Cubitt Park and Coal Drops Yard.

The property is offered with a generous storage unit and parking is available by separate negotiation.

Residents of Luma also benefit from concierge services and residents' lounge.

Nearby transport links include St. Pancras International and King's Cross Station (Northern, Victoria, Hammersmith & City, Metropolitan, Circle and Piccadilly lines, National Rail) providing frequent services into the City and the West End.

Vibrant Coal Drops Yard and Granary Square are also moments away.

# FEATURES

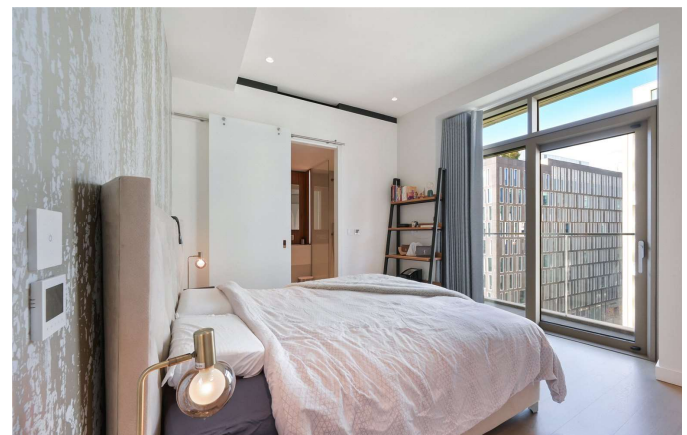
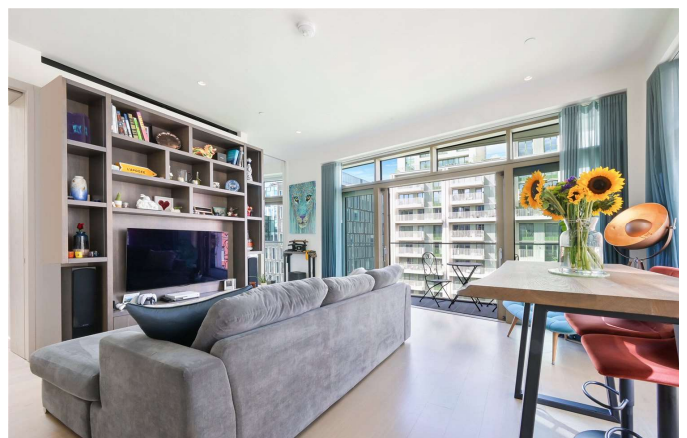
Three Bedrooms
One Reception Room
Two Bathrooms
Private Parking
Balcony
Concierge/ Porter
Roof Terrace
Lift

# LOCATION



**KINGS CROSS SALES**  
Unit 4,6 Pancras Square, N1C 4AG  
  
020 7467 2020  
sales.kingscross@bhhs-london.com





# FLOORPLAN

## LUMA HOUSE

APPROXIMATE GROSS INTERNAL FLOOR AREA: 1103 SQ FT - 102.51 SQ M



FOR ILLUSTRATION PURPOSES ONLY

THIS FLOOR PLAN SHOULD BE USED AS A GENERAL OUTLINE FOR GUIDANCE ONLY AND DOES NOT CONSTITUTE IN WHOLE OR IN PART AN OFFER OR CONTRACT. ANY INTENDING PURCHASER OR LESSEE SHOULD SATISFY THEMSELVES BY INSPECTION, SEARCHES, ENQUIRIES AND FULL SURVEY AS TO THE CORRECTNESS OF EACH STATEMENT. ANY AREAS, MEASUREMENTS OR DISTANCES QUOTED ARE APPROXIMATE AND SHOULD NOT BE USED TO VALUE A PROPERTY OR BE THE BASIS OF ANY SALE OR LET.