



A Beautifully Presented Three Bedroom Apartment

# SMUGGLERS WAY

WANDSWORTH, SW18

£1,223.08 per week

**BERKSHIRE  
HATHAWAY**  
HOMESERVICES

LONDON

# PROPERTY DETAILS

|  |                               |
|--|-------------------------------|
| <b>Guide Price</b><br>£1,223.08 per week | <b>Square Footage</b><br>1800 |
| <b>Council Tax Band</b><br>H             | <b>EPC Rating</b><br>E        |

A beautifully presented three-bedroom apartment in the sought-after Compass House development. This modern property boasts a spacious open-plan living area, a sleek fitted kitchen, and three well-proportioned bedrooms, perfect for families or sharers.

One of the standout features of this flat is the massive private terrace, offering exceptional outdoor space - ideal for entertaining, relaxing, or enjoying panoramic views of the city.

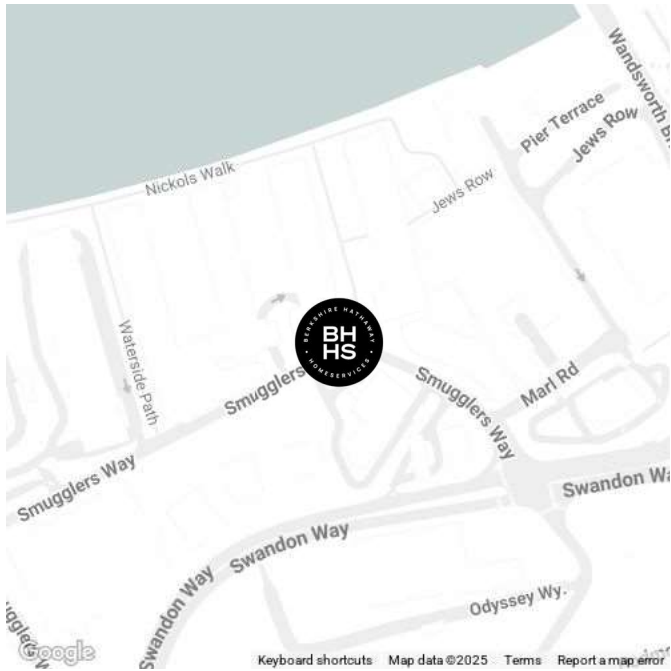
Compass House is conveniently located in Smugglers Way, Wandsworth, with excellent transport links, riverside walks, and a great selection of local shops, restaurants, and amenities nearby.

This property combines modern living with outstanding outdoor space, making it a rare opportunity in London.

## FEATURES

- Three Bedrooms
- One Reception Room
- Three Bathrooms
- Penthouse
- Roof Terrace

## LOCATION



### KNIGHTSBRIDGE LETTINGS

55-57 SLOANE AVENUE, SW3 3DH

020 7235 9641

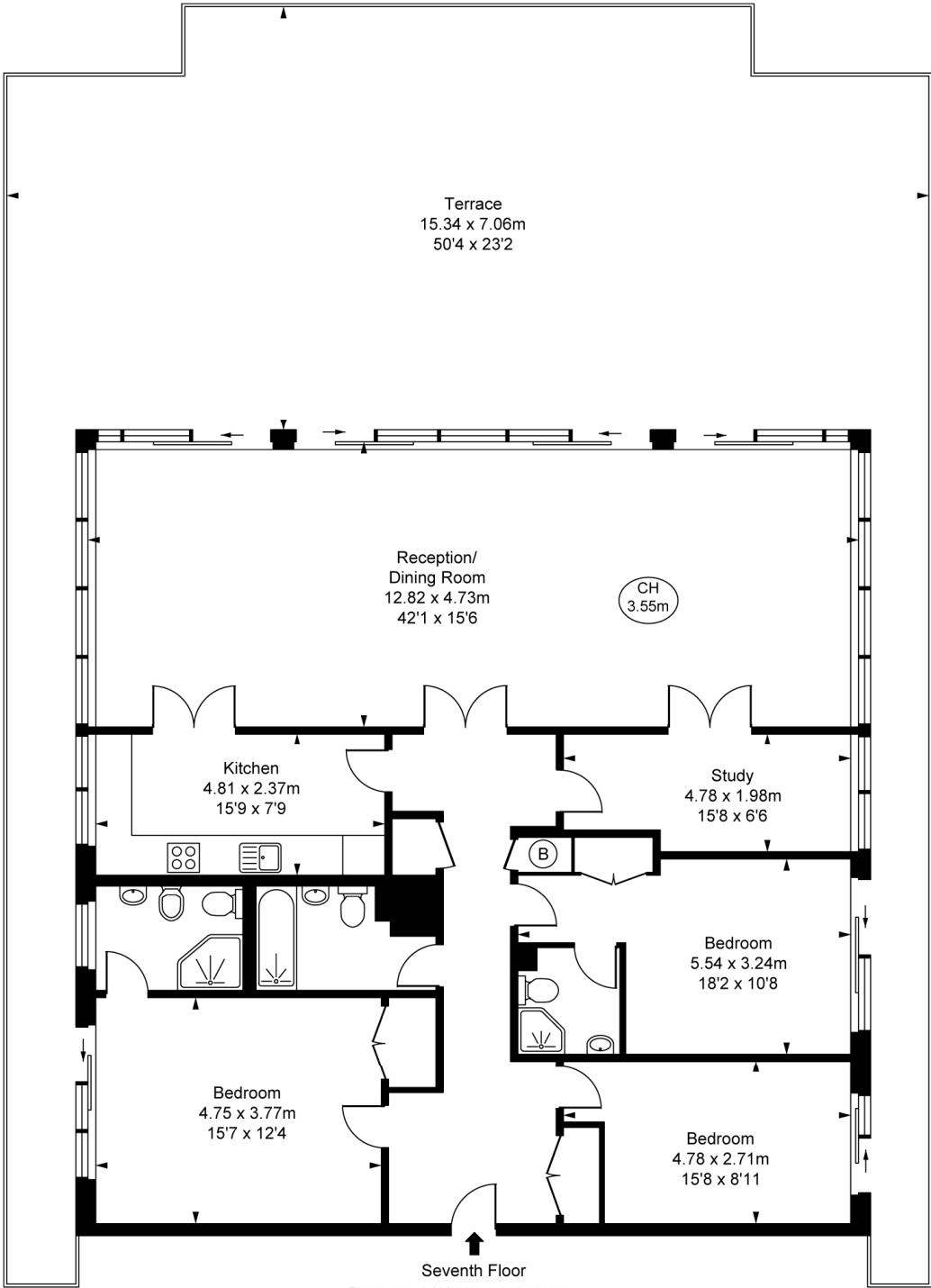
lettings.knightsbridge@bhhs-london.com





# FLOORPLAN

Compass House, SW18  
Approximate Gross Internal Area  
165.80 sq m / 1,785 sq ft  
( CH = Ceiling Heights )



This plan is not to scale. It is for guidance only and not for valuation purposes.  
All measurements and areas are approximate only, and have been prepared in accordance with the current edition of the RICS Code of Measuring Practice.  
© Fulham Performance