



A Spacious Three Bedroom Apartment in the  
Heart of Marylebone

# DEVONSHIRE PLACE

MARYLEBONE, W1G

Asking Price  
£1,600,000

**BERKSHIRE  
HATHAWAY**  
HOMESERVICES

LONDON

# PROPERTY DETAILS

<b>Guide Price</b> £1,600,000	<b>Square Footage</b> 1237
<b>Council Tax Band</b> G	<b>EPC</b> D
<b>Tenure</b> Leasehold 143 years	<b>Service Charge</b> £12,000 pa

A beautifully presented three bedroom apartment located in a period property in the heart of Marylebone.

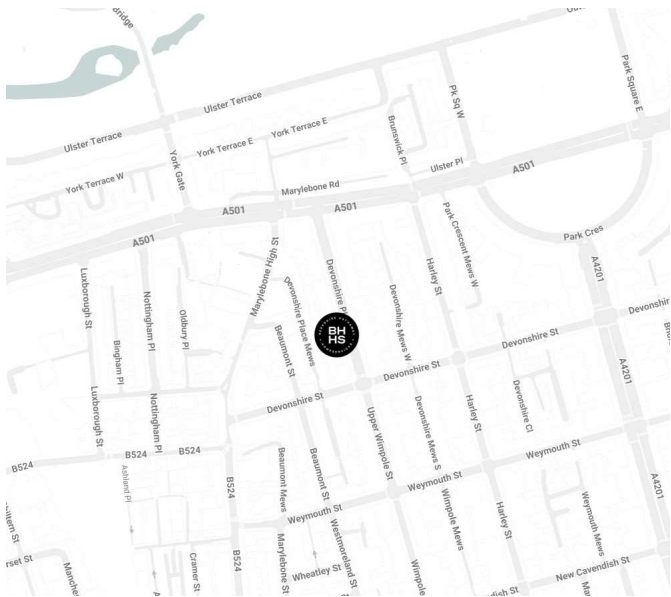
Arranged laterally over the ground floor this property comprises three bedrooms, two bathrooms, an additional wc, with a large open plan kitchen dining room, and a separate reception room with high ceilings and period features throughout.

Set on one of Marylebone's most prestigious streets, Devonshire Place is a stone's throw from the boutique shops and restaurants of Marylebone High Street, the celebrated shopping of Oxford Street and the greenery of Regent's Park. Nearby transport links include Regent's Park, Great Portland Street, Baker Street and Marylebone Station.

## FEATURES

- Three Bedrooms
- Two Reception Rooms
- Two Bathrooms
- Period
- Ground Floor

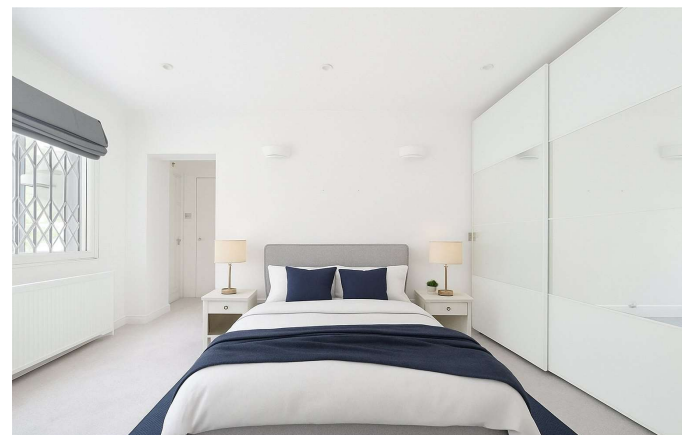
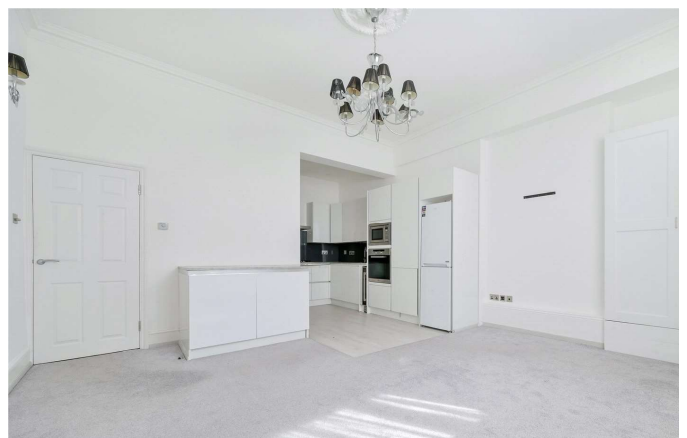
## LOCATION



**MARYLEBONE SALES**  
20A Paddington Street, W1U 5QP

020 7486 6338  
sales.marylebone@bhhs-london.com

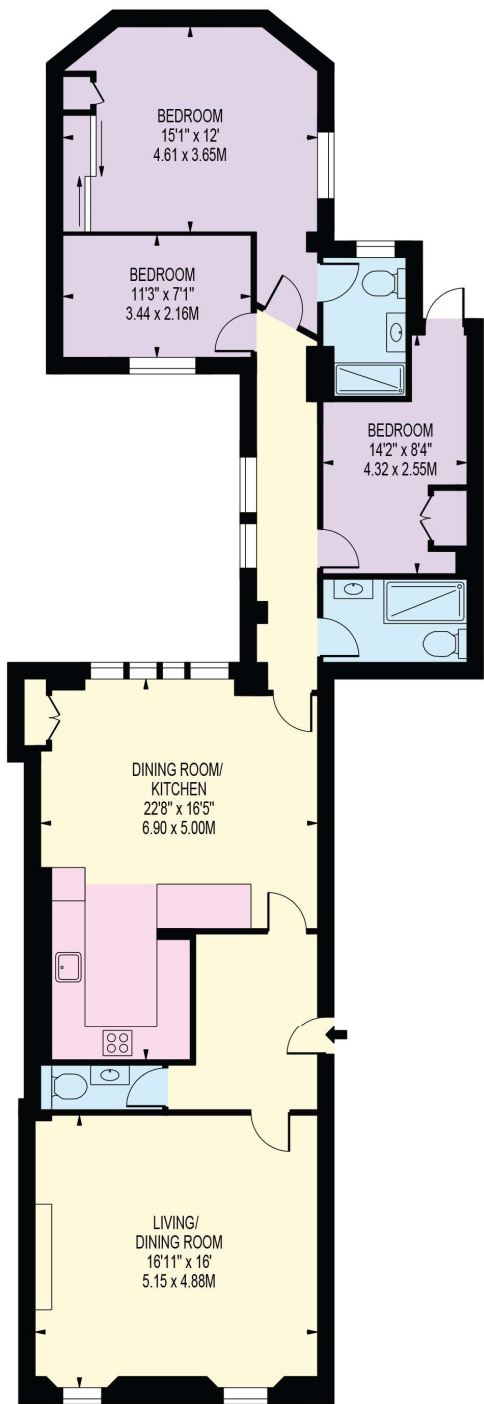




# FLOORPLAN

## DEVONSHIRE PLACE

APPROXIMATE GROSS INTERNAL FLOOR AREA : 1237 SQ FT - 114.91 SQ M



GROUND FLOOR

FOR ILLUSTRATION PURPOSES ONLY

THIS FLOOR PLAN SHOULD BE USED AS A GENERAL OUTLINE FOR GUIDANCE ONLY AND DOES NOT CONSTITUTE IN WHOLE OR IN PART AN OFFER OR CONTRACT. ANY INTENDING PURCHASER OR LESSEE SHOULD SATISFY THEMSELVES BY INSPECTION, SEARCHES, ENQUIRIES AND FULL SURVEY AS TO THE CORRECTNESS OF EACH STATEMENT. ANY AREAS, MEASUREMENTS OR DISTANCES QUOTED ARE APPROXIMATE AND SHOULD NOT BE USED TO VALUE A PROPERTY OR BE THE BASIS OF ANY SALE OR LET.