



A Spacious Three Bedroom Apartment in a Red
Brick Mansion Block

CABELL STREET

MARYLBONE, NW1

£1,038 per week

**BERKSHIRE
HATHAWAY**
HOMESERVICES

LONDON

PROPERTY DETAILS

Guide Price £1,038 per week	Square Footage 1,114
Council Tax Band F	EPC Rating C

Nestled equidistant from Marylebone, Paddington, and Hyde Park, this lateral apartment offers unparalleled convenience and charm. Boasting three generously sized double bedrooms, including an en suite, alongside a further modern bathroom. The separate and spacious reception room, complemented by a contemporary galley kitchen, provides a versatile living space.

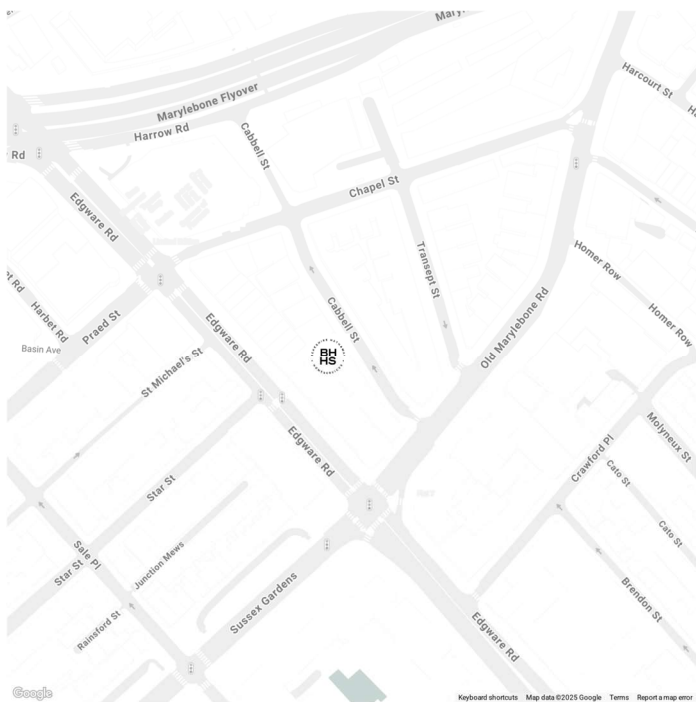
Adding to its appeal, the property features ample storage, wooden flooring, high ceilings, and timeless period accents, enhancing its character and allure.

Convenient transport links are readily accessible at Edgware Road, Marylebone, and Baker Street stations, ensuring quick connectivity to the city and beyond. Nearby, the vibrant streets of Marylebone Village and Edgware Road offer an array of local eateries and charming coffee shops.

FEATURES

- Three Bedrooms
- One Reception Room
- Two Bathrooms
- Period

LOCATION

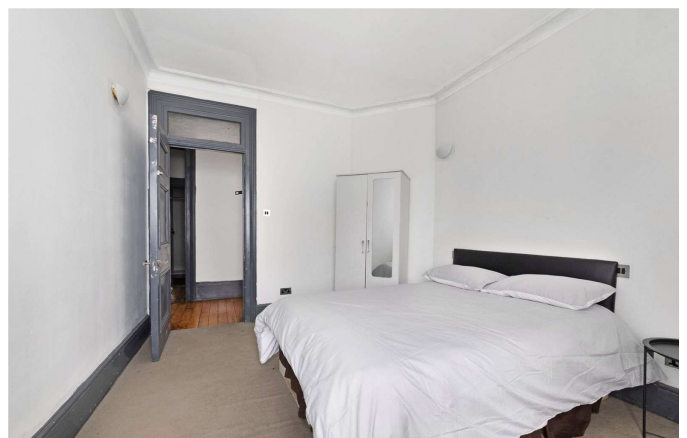


MARYLEBONE LETTINGS

20A Paddington Street, W1U 5QP

020 7486 6338

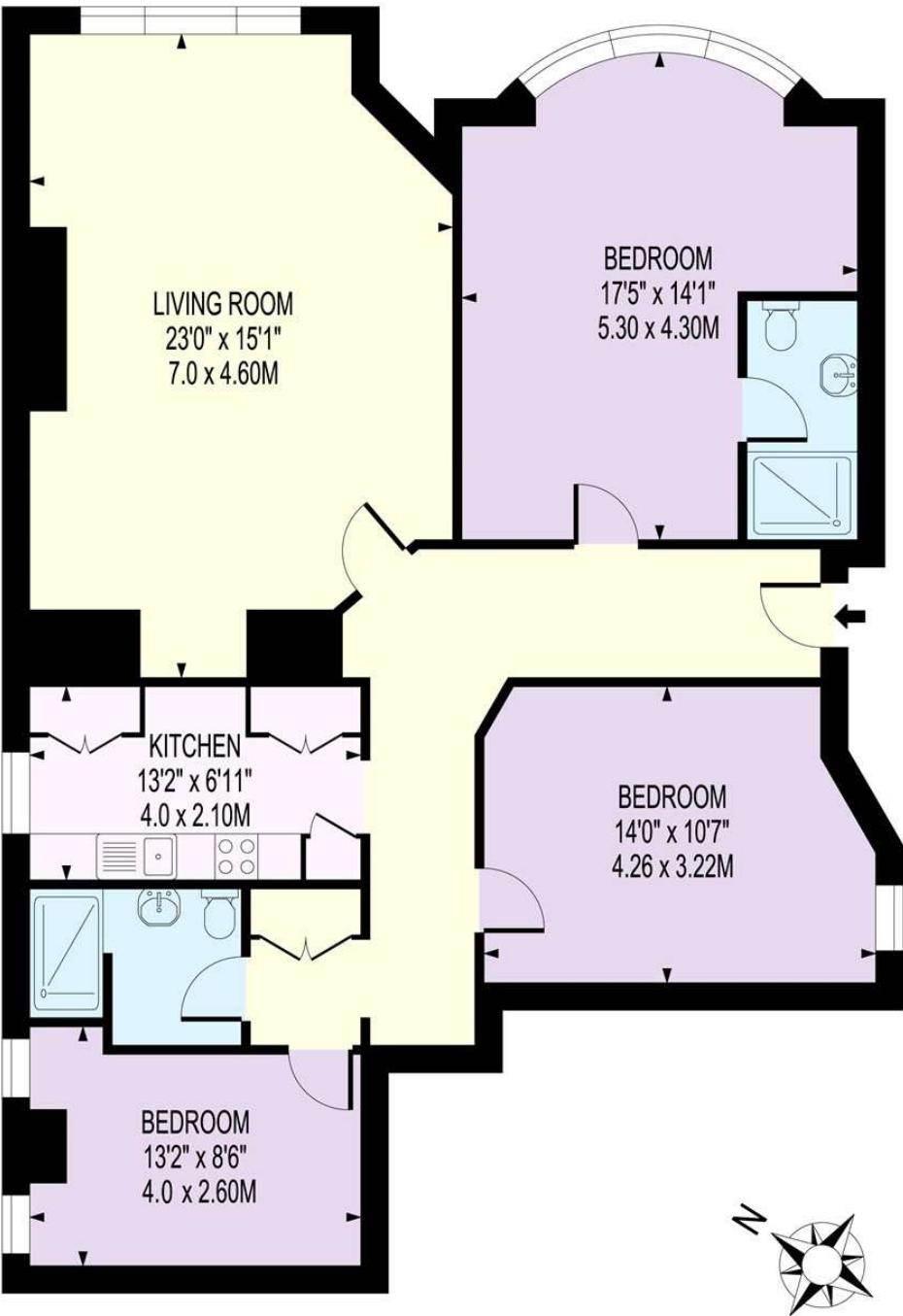
lettings.marylebone@bhhs-london.com



FLOORPLAN

HYDE PARK MANSIONS

APPROXIMATE GROSS INTERNAL FLOOR AREA : 1076 SQ FT- 100.0 SQ M



LOWER GROUND FLOOR

FOR ILLUSTRATION PURPOSES ONLY

THIS FLOOR PLAN SHOULD BE USED AS A GENERAL OUTLINE FOR GUIDANCE ONLY AND DOES NOT CONSTITUTE IN WHOLE OR IN PART AN OFFER OR CONTRACT. ANY INTENDING PURCHASER OR LESSEE SHOULD SATISFY THEMSELVES BY INSPECTION, SEARCHES, ENQUIRIES AND FULL SURVEY AS TO THE CORRECTNESS OF EACH STATEMENT. ANY AREAS, MEASUREMENTS OR DISTANCES QUOTED ARE APPROXIMATE AND SHOULD NOT BE USED TO VALUE A PROPERTY OR BE THE BASIS OF ANY SALE OR LET.