



Spacious One Bedroom Apartment Panoramic Views

LUXBOROUGH STREET

MARYLEBONE, W1U

Asking Price
£625,000

**BERKSHIRE
HATHAWAY**
HOMESERVICES

LONDON

PROPERTY DETAILS

Guide Price
£625,000

Square Footage
523

Council Tax Band
D

EPC
D

Tenure
Leasehold 170 Years 5 Months

Service Charge
£2,500 pa

With panoramic views across the London Skyline the new owner of this property will be able to watch many sunsets from their private South facing balcony. Featuring an open-plan living room, sizable bedroom and modern bathroom, this property truly is a rare gem. Residents also benefit from well-maintained communal gardens.

Located in a building built in brutalist architectural style it is conveniently located close to Marylebone High Street, with excellent amenities. Transport links can be found at Baker Street. Marylebone and Bond Street stations and abundant green space can be found at nearby Regent's Park.

FEATURES

One Bedroom

One Reception Room

One Bathroom

Residents Parking

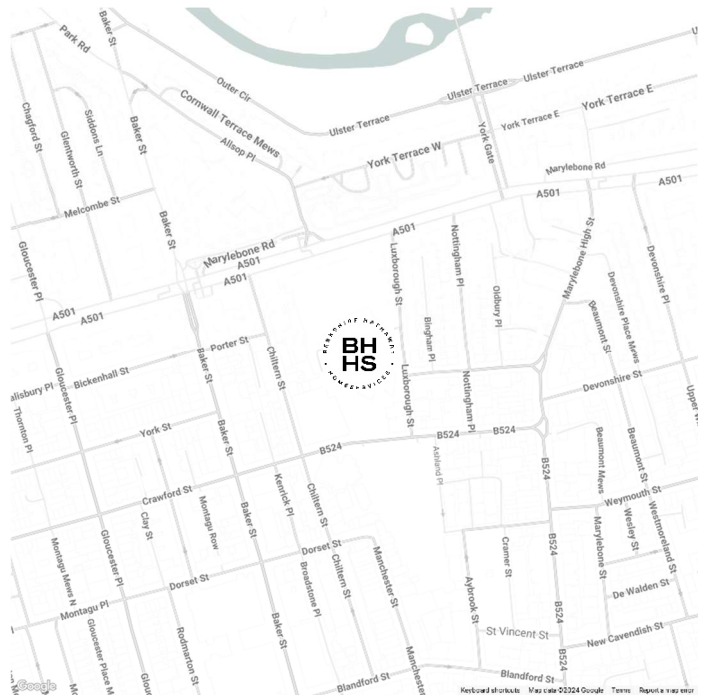
Upper Floor

Lift

Balcony

Communal Gardens

LOCATION



MARYLEBONE SALES

20A Paddington Street, W1U 5QP

020 7486 6338

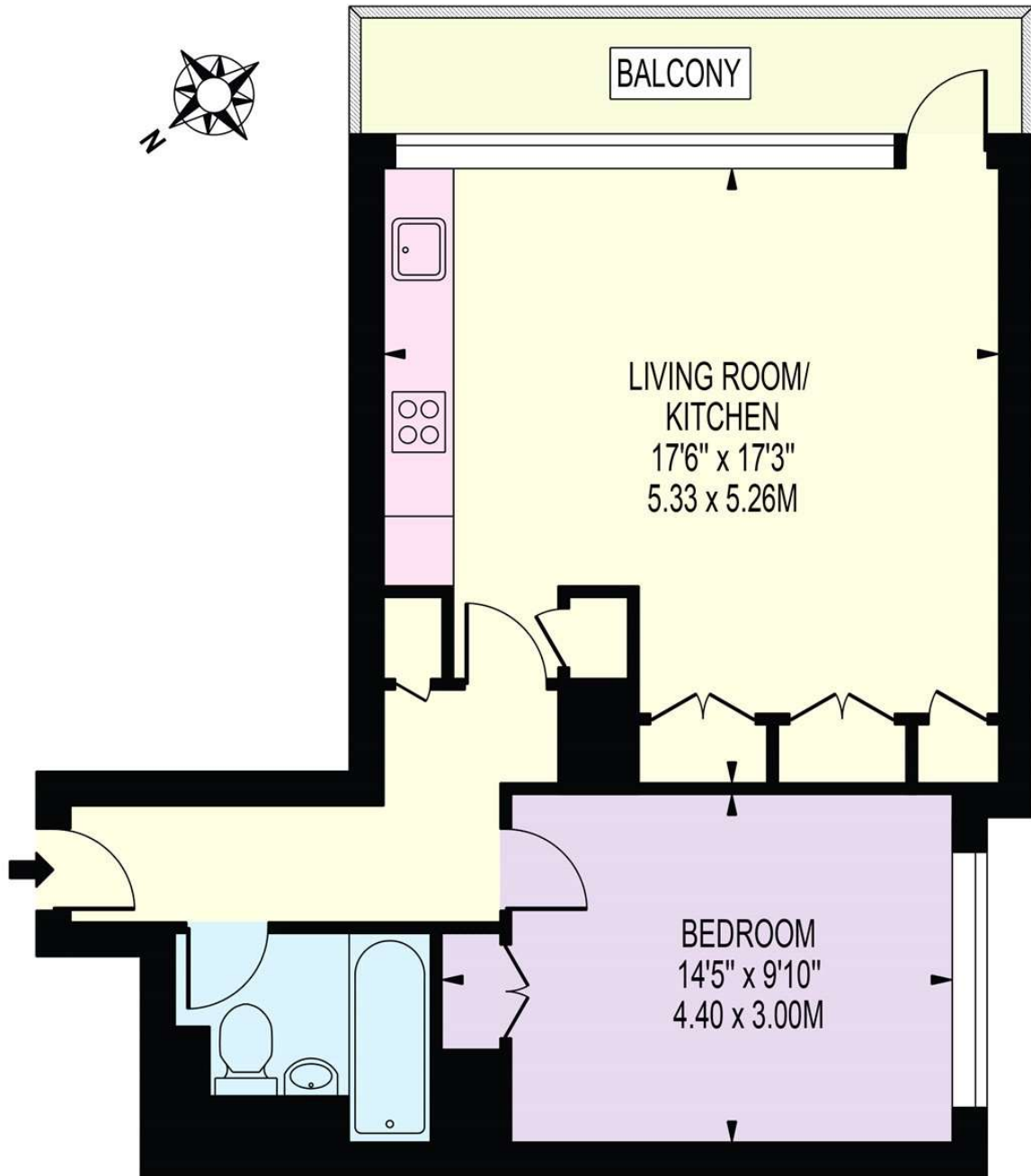
sales.marylebone@bhhs-london.com



FLOORPLAN

LUXBOROUGH TOWER

APPROXIMATE GROSS INTERNAL FLOOR AREA: 523 SQ FT - 48.62 SQ M



TWENTY FIRST FLOOR

FOR ILLUSTRATION PURPOSES ONLY

THIS FLOOR PLAN SHOULD BE USED AS A GENERAL OUTLINE FOR GUIDANCE ONLY AND DOES NOT CONSTITUTE IN WHOLE OR IN PART AN OFFER OR CONTRACT. ANY INTENDING PURCHASER OR LESSEE SHOULD SATISFY THEMSELVES BY INSPECTION, SEARCHES, ENQUIRIES AND FULL SURVEY AS TO THE CORRECTNESS OF EACH STATEMENT. ANY AREAS, MEASUREMENTS OR DISTANCES QUOTED ARE APPROXIMATE AND SHOULD NOT BE USED TO VALUE A PROPERTY OR BE THE BASIS OF ANY SALE OR LET.