



A Well-Presented Studio Apartment in Chelsea

SLOANE AVENUE

CHELSEA, SW3

Asking Price
£675,000

**BERKSHIRE
HATHAWAY**
HOMESERVICES

LONDON

PROPERTY DETAILS

Guide Price £675,000	Square Footage 322
Council Tax Band D	EPC C
Tenure Share of Freehold	

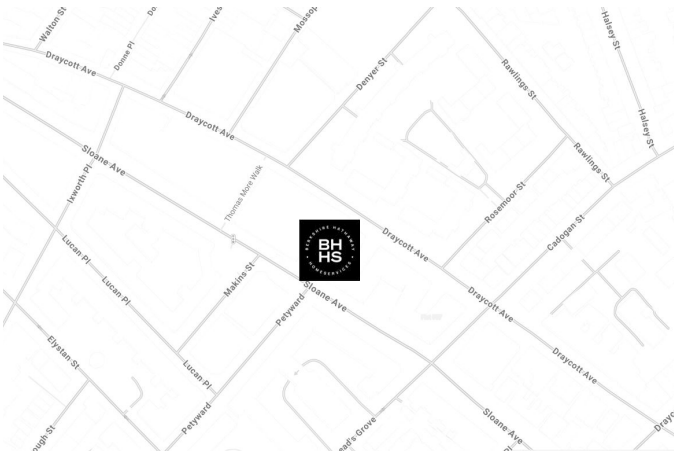
A well-proportioned studio apartment on the seventh floor of this popular mansion building in the heart of Chelsea. Nell Gwynn House is set-up as an apart hotel with an on-site short-lets team. Alternatively, these flats make excellent investments for long term rental, as well as being a perfect pied à terre.

The building is located at the southern end of Sloane Avenue, offering easy access to King's Road and Sloane Square and a short walk from South Kensington.

FEATURES

- Studio
- One Reception Room
- One Bathroom
- Open Plan Kitchen
- Concierge/ Porter
- Communal Gardens

LOCATION



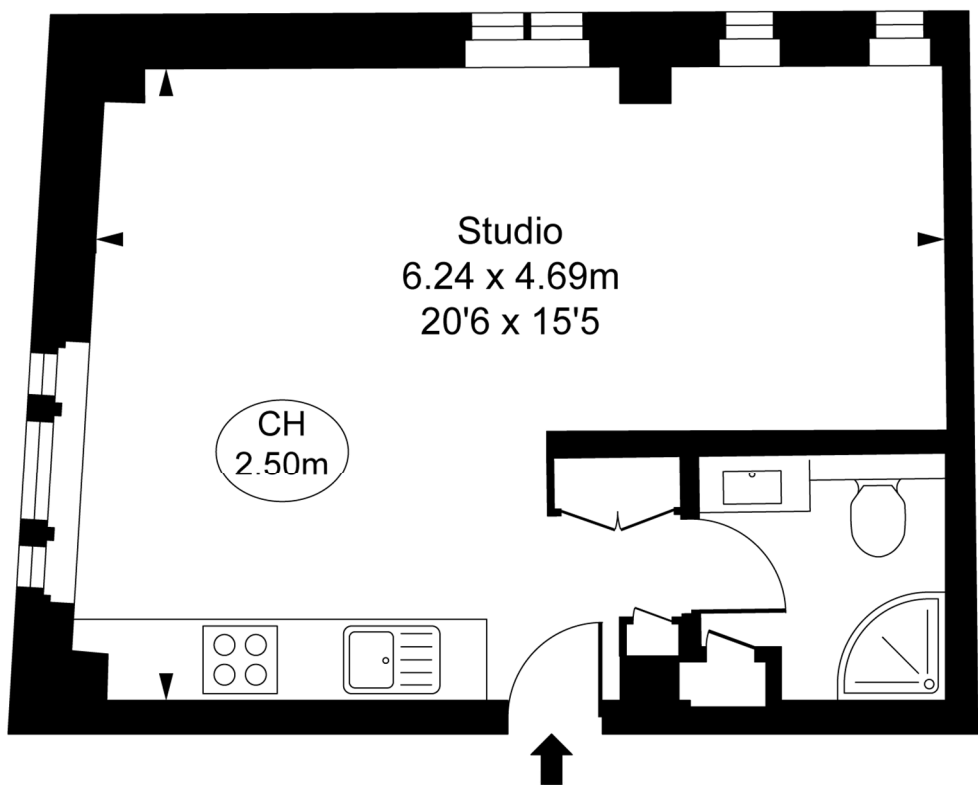
KNIGHTSBRIDGE SALES
55-57 SLOANE AVENUE, SW3 3DH

020 7235 9641
sales.knightsbridge@bhhs-london.com



FLOORPLAN

Nell Gwynn House,
Sloane Avenue, SW3
Approximate Gross Internal Area
29.92 sq m / 322 sq ft
(CH = Ceiling Heights)



Seventh Floor



This plan is not to a given scale. A detailed layout plan to scale for valuation is available on request. All measurements and areas are within 1% tolerance and have been prepared in accordance with industry standards as defined in the RICS Code of Measuring Practice
© Fulham Performance