



Newly Refurbished Three Bedroom Apartment in  
the Heart of Marylebone

# MONTAGU SQUARE

MARYLEBONE, W1H

£1,153.85 per week

**BERKSHIRE  
HATHAWAY**  
HOMESERVICES

LONDON

# PROPERTY DETAILS

<b>Guide Price</b> £1,153.85 per week	<b>Square Footage</b> 916
<b>Council Tax Band</b> H	<b>EPC Rating</b> C

This spacious and newly refurbished three-bedroom apartment is arranged laterally in this purpose built portered block on Montagu Square.

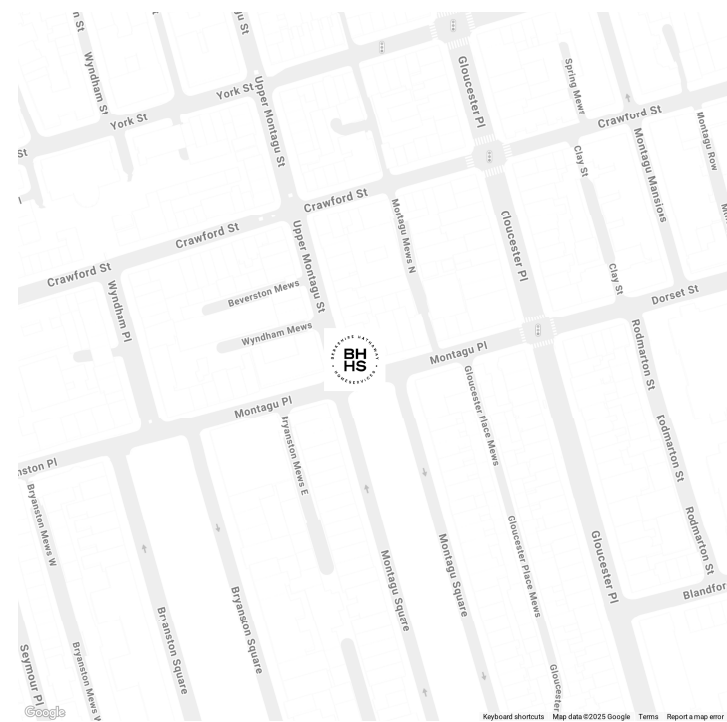
The property comprises a spacious reception room with direct access to the communal gardens, separate modern kitchen, three double bedrooms, one of which is ensuite, a further family bathroom, and an additional wc with utility. The property further benefits from wooden flooring throughout, lift access and an abundance of storage throughout.

Montagu Square is one of the most sought-after garden squares in Central London and is located within walking distance of Marylebone Village, Baker Street, Oxford Street and Mayfair. Residents of the square enjoy exclusive access to a private landscaped garden.

# FEATURES

- Three Bedrooms
- One Reception Room
- Two Bathrooms
- Concierge / Porter
- Lift
- Furnished
- Communal Gardens

# LOCATION



## MARYLEBONE LETTINGS

20A Paddington Street, W1U 5QP

020 7486 6338

lettings.marylebone@bhhs-london.com

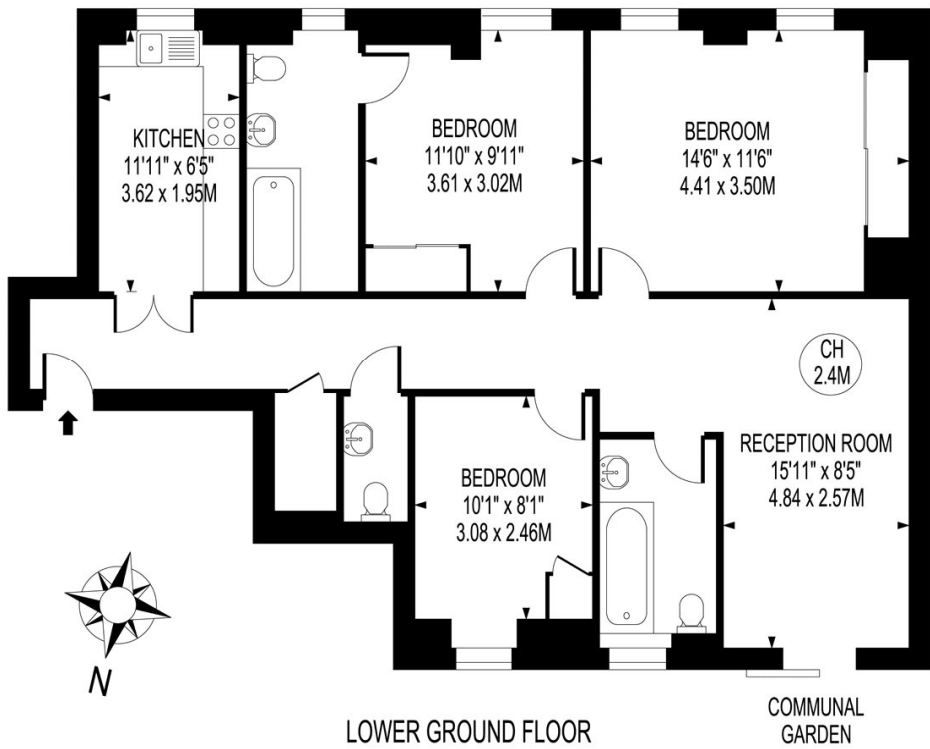




# FLOORPLAN

## BRYMON COURT

APPROXIMATE GROSS INTERNAL FLOOR AREA : 916 SQ FT- 85.10 SQ M



FOR ILLUSTRATION PURPOSES ONLY

THIS FLOOR PLAN SHOULD BE USED AS A GENERAL OUTLINE FOR GUIDANCE ONLY AND DOES NOT CONSTITUTE IN WHOLE OR IN PART AN OFFER OR CONTRACT.  
ANY INTENDING PURCHASER OR LESSEE SHOULD SATISFY THEMSELVES BY INSPECTION, SEARCHES, ENQUIRIES AND FULL SURVEY AS TO THE CORRECTNESS OF EACH STATEMENT.  
ANY AREAS, MEASUREMENTS OR DISTANCES QUOTED ARE APPROXIMATE AND SHOULD NOT BE USED TO VALUE A PROPERTY OR BE THE BASIS OF ANY SALE OR LET.