



A Bright Two Bedroom Apartment in South Kensington

Fulham Road

SW3

£900 per week

**BERKSHIRE
HATHAWAY**
HOMESERVICES

LONDON

PROPERTY DETAILS

Guide Price £900 per week	Square Footage 696	<p>A two-bedroom two-bathroom apartment situated on the second floor (with lift) in this portered building perfectly located for all the amenities of South Kensington and Chelsea.</p> <p>The apartment has the use of resident's communal gardens to the rear of the building.</p> <p>The building offers daytime porter, 24 hour maintenance service, CCTV</p> <p>Available furnished or Unfurnished.</p>
Council Tax TBC	EPC Rating C	

FEATURES

2 Bedrooms
2 Bathrooms
Residents Parking
Concierge/ Porter
Lift
Period

LOCATION



KNIGHTSBRIDGE LETTINGS
55-57 SLOANE AVENUE, SW3 3DH

020 7235 9641
lettings.knightsbridge@bhhs-london.com



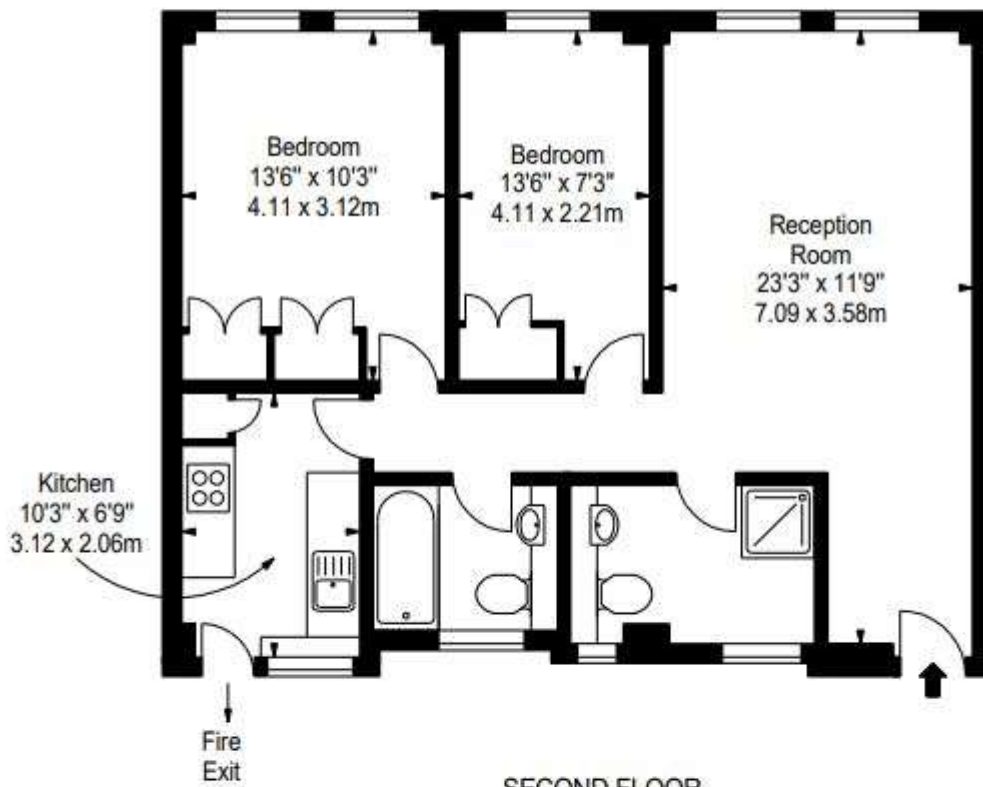


FLOORPLAN

30 PELHAM COURT, SW3

APPROX. GROSS INTERNAL AREA *
696 Ft² - 64.66 M²

ILLUSTRATION FOR IDENTIFICATION PURPOSES ONLY. NOT TO SCALE
* As Defined by RICS - Code of Measuring Practice



SECOND FLOOR

BKR

www.bkrfloorplans.co.uk
T: 0845 257 2523
© BKR 2010