



Large Two Bedroom Two Bathroom Apartment
in the Heart of Marylebone with Designated
Parking

MARYLEBONE ROAD

MARYLEBONE, NW1

Asking Price
£895,000

**BERKSHIRE
HATHAWAY**
HOMESERVICES

LONDON

PROPERTY DETAILS

Guide Price £895,000	Square Footage 823
Council Tax Band G	EPC C
Ground Rent £400 pa	Service Charge £11672.03 pa
Tenure Leasehold	

A refurbished apartment on the ground floor of a sought-after portered block moments from Regent's Park and Baker Street.

The home comprises a large open plan kitchen and living area, two large double bedrooms including one with an en suite bathroom. There is also a further family bathroom and the property benefits from wooden flooring throughout.

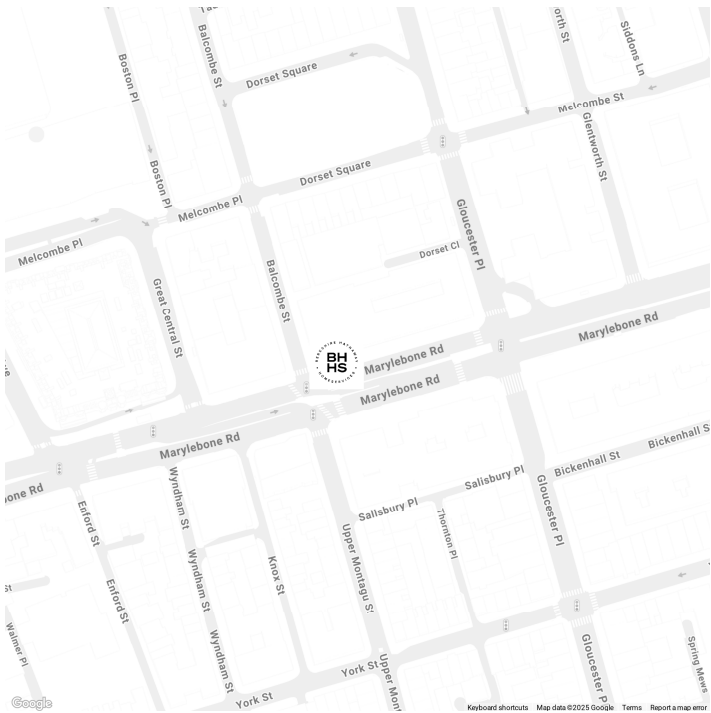
Located in a quiet part of the development, this home benefits from its own front door, and access to a communal courtyard. There is also allocated parking. Marathon House is a highly prestigious modern development with a 24-hour concierge service and a residents-only gym. Within a short walk to both Baker Street Station and Marylebone Station.

****Virtually Staged****

FEATURES

- Two Bedrooms
- One Reception Room
- Two Bathrooms
- Concierge / Porter
- 24 Hour Security
- Off Street Parking, Private Parking
- Communal Gardens

LOCATION



MARYLEBONE SALES
20A Paddington Street, W1U 5QP

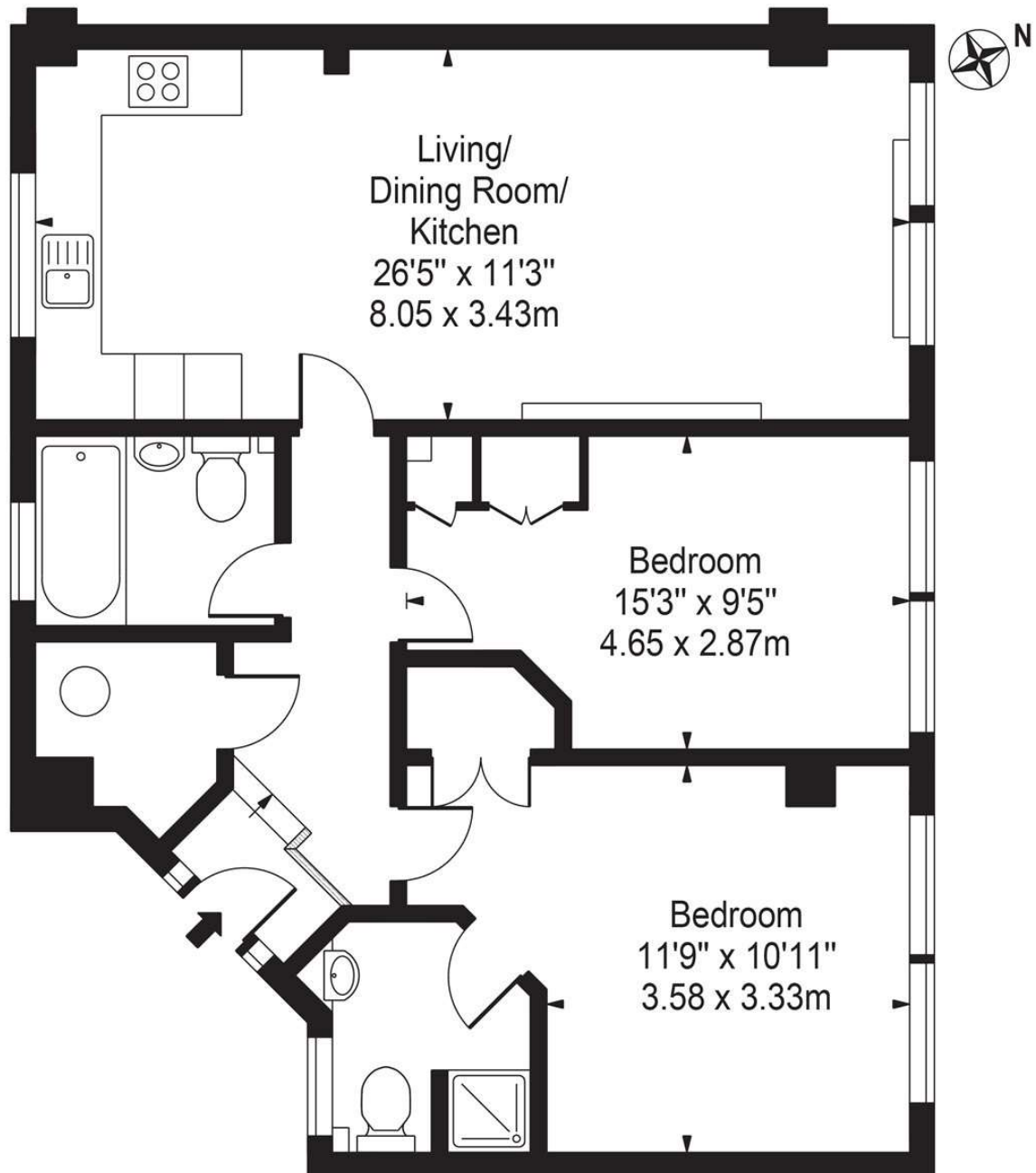
020 7486 6338
sales.marylebone@bhhs-london.com



FLOORPLAN

Marathon House

Approx. Gross Internal Area 810 Sq Ft - 75.25 Sq M



Ground Floor

For Illustration Purposes Only - Not To Scale

This floor plan should be used as a general outline for guidance only and does not constitute in whole or in part an offer or contract. Any intending purchaser or lessee should satisfy themselves by inspection, searches, enquiries and full survey as to the correctness of each statement. Any areas, measurements or distances quoted are approximate and should not be used to value a property or be the basis of any sale or let.