



Elegant One-Bedroom Apartment in Prime
Bayswater Location

INVERNESS TERRACE

BAYSWATER, W2

£700 per week

**BERKSHIRE
HATHAWAY**
HOMESERVICES

LONDON

PROPERTY DETAILS

Guide Price £700 per week	Square Footage 875
Council Tax Band F	EPC Rating C

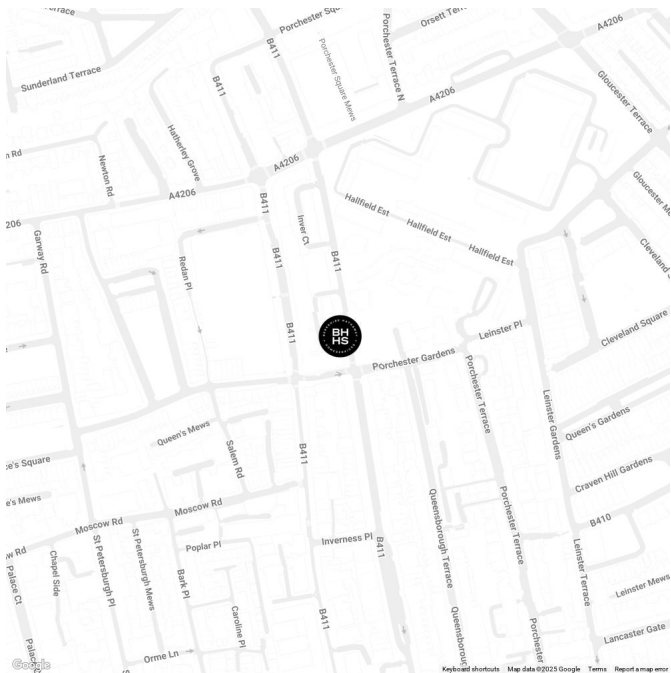
SHORT LET This stylish short let one-bedroom apartment has been meticulously renovated to a high standard and is situated on the ground floor of a charming building. The apartment features a generous reception room, a brand-new kitchen, and a striking modern bathroom. With its spacious layout, ample natural light, and elegant dark wood flooring, the property radiates contemporary elegance.

Nestled in the heart of Bayswater, Inverness Terrace is just moments from Hyde Park and boasts excellent connectivity to the West End, the City, and Canary Wharf. The vibrant amenities of Queensway and Westbourne Grove are within easy reach, while Paddington Station provides access to the Heathrow Express, Network Rail connections, and various Underground services. Additional transport links are available at Queensway (Central line) and Bayswater (District & Circle lines).

FEATURES

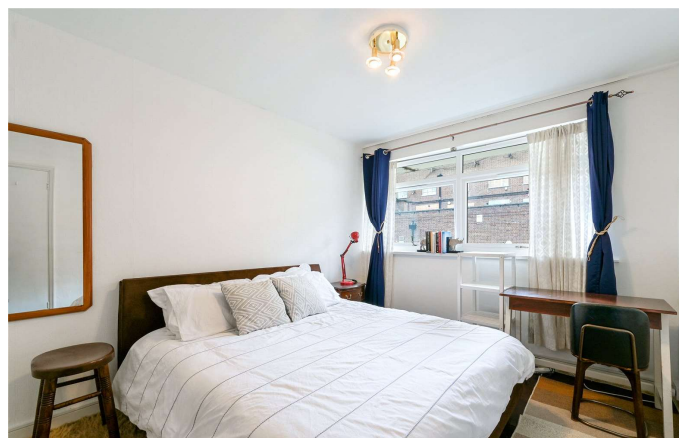
- One Bedroom
- One Reception Room
- One Bathroom
- Ground Floor

LOCATION



HYDE PARK LETTINGS
24-25 Albion Street, W2 2AX

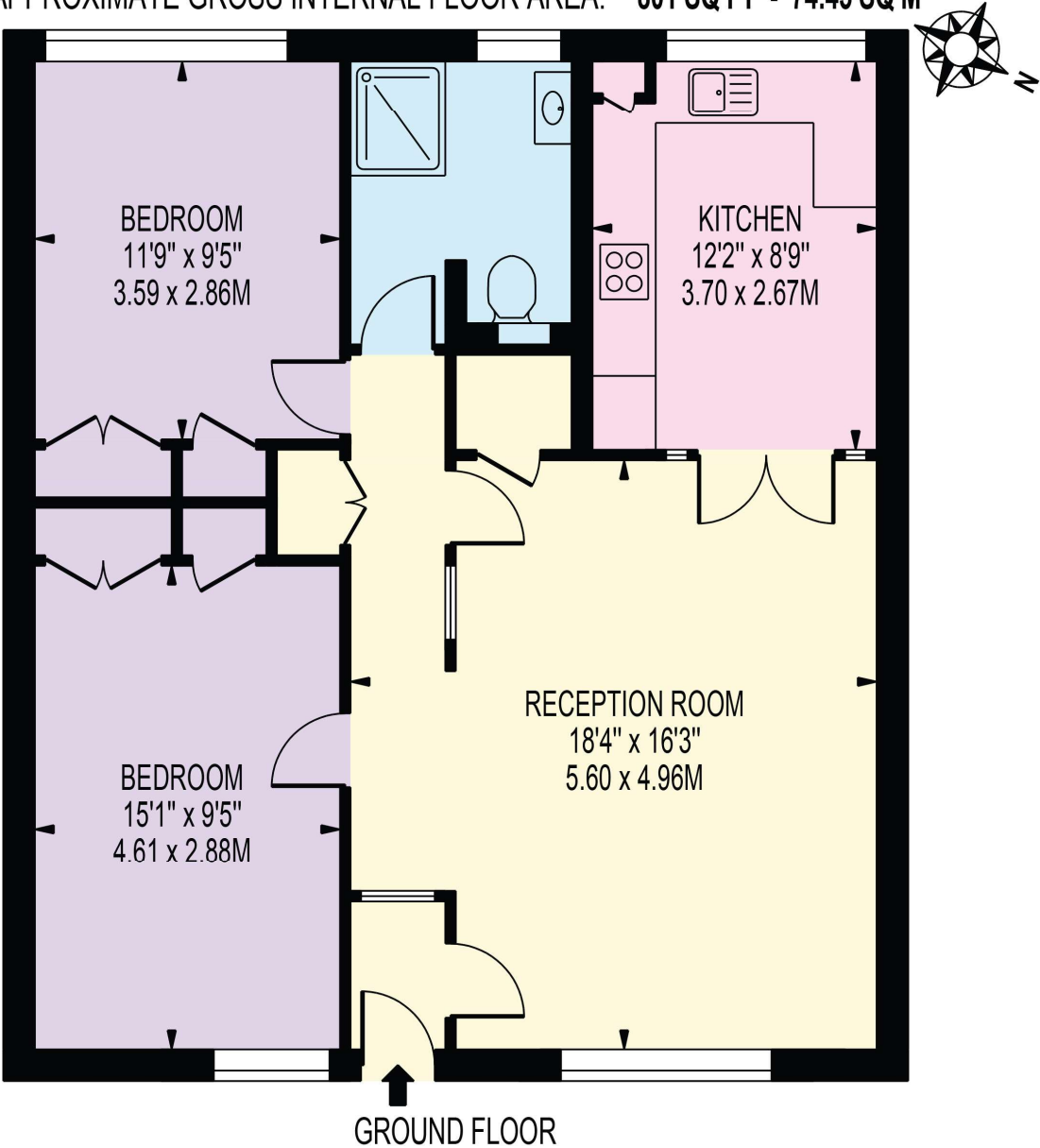
020 7262 2030
lettings.hydepark@bhhs-london.com



FLOORPLAN

CERVANTES COURT

APPROXIMATE GROSS INTERNAL FLOOR AREA: 801 SQ FT - 74.45 SQ M



FOR ILLUSTRATION PURPOSES ONLY

THIS FLOOR PLAN SHOULD BE USED AS A GENERAL OUTLINE FOR GUIDANCE ONLY AND DOES NOT CONSTITUTE IN WHOLE OR IN PART AN OFFER OR CONTRACT.
ANY INTENDING PURCHASER OR LESSEE SHOULD SATISFY THEMSELVES BY INSPECTION, SEARCHES, ENQUIRIES AND FULL SURVEY AS TO THE CORRECTNESS OF EACH STATEMENT.
ANY AREAS, MEASUREMENTS OR DISTANCES QUOTED ARE APPROXIMATE AND SHOULD NOT BE USED TO VALUE A PROPERTY OR BE THE BASIS OF ANY SALE OR LET.