



Elegant Five-Bedroom Home with Generous Spaces and Private Terrace

PORCHESTER PLACE

HYDE PARK ESTATE, W2

Asking Price
£3,850,000

**BERKSHIRE
HATHAWAY**
HOMESERVICES

LONDON

PROPERTY DETAILS

Guide Price £3,850,000	Square Footage 2799
----------------------------------	-------------------------------

Council Tax Band H	EPC D
------------------------------	-----------------

Ground Rent £250	Tenure Leasehold
----------------------------	----------------------------

Situated in the sought-after Hyde Park Estate, this spacious post-war five-bedroom home on Porchester Place offers a blend of modern comfort and mid-century charm. The property spans multiple levels and is presented in great condition, featuring light-filled rooms designed for practical and comfortable living. Four well-appointed bathrooms add to the convenience of the home, ideal for both families and those who love to entertain.

Outdoors, a cozy private garden provides a tranquil escape, while the generously sized roof terrace is perfect for open-air dining and relaxation. Positioned in a prime central London location, the property offers easy access to the serene expanses of Hyde Park, along with the vibrant amenities, dining, and shopping options of the surrounding area. This is a unique opportunity to enjoy spacious, well-designed living in the heart of one of London's most desirable neighbourhoods.

FEATURES

Five Bedrooms

Two Reception Rooms

Four Bathrooms

Residents Parking

Roof Terrace

Garden

Balcony

Modern

LOCATION



HYDE PARK SALES

24-25 Albion Street, W2 2AX

020 7262 2030

sales.hydepark@bhhs-london.com



FLOORPLAN

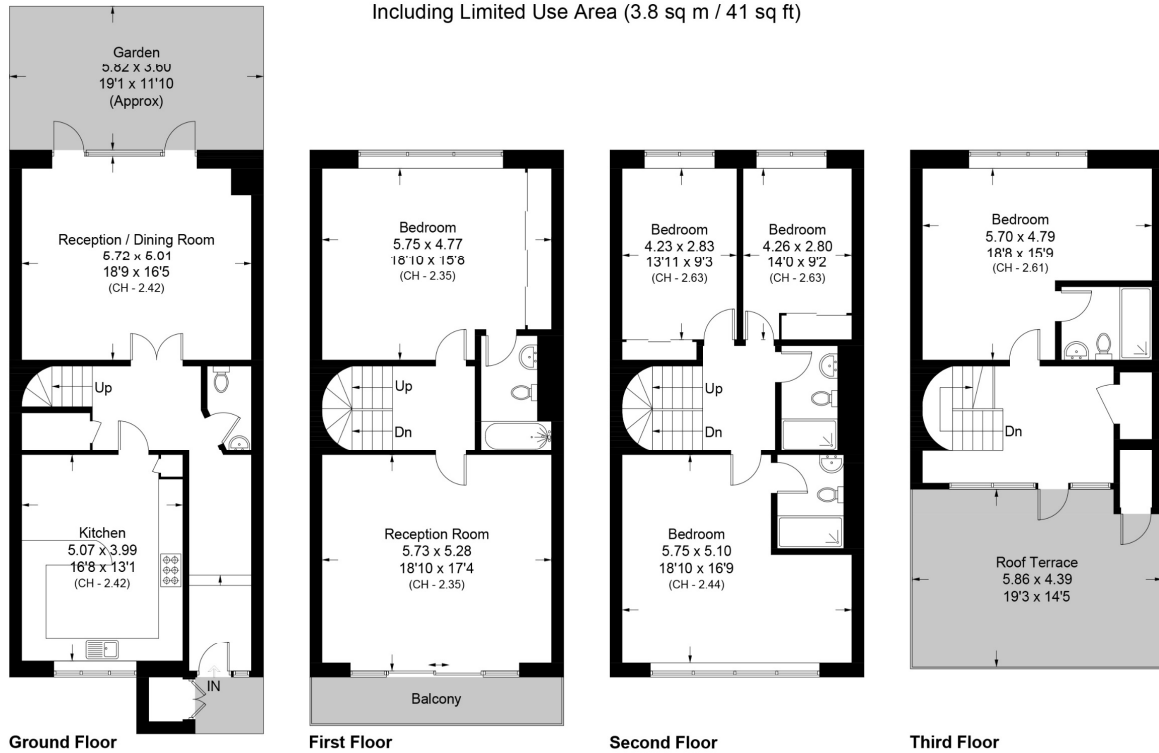
Porchester Place, W2

Approximate Area = 260.0 sq m / 2799 sq ft

External Cupboard = 2.2 sq m / 24 sq ft

Total = 262.2 sq m / 2823 sq ft

Including Limited Use Area (3.8 sq m / 41 sq ft)



Surveyed and drawn in accordance with the International property measurements standards (IPMS 2: Residential) Not drawn to scale unless stated. Whilst every care is taken in the preparation of this plan, please check all dimensions, shapes and compass bearings before making any decisions reliant upon them.