



Charming One-Bedroom Apartment with Balcony
and Garden Access in Redcliffe Square, Chelsea

REDCLIFFE SQUARE

WEST BROMPTON, SW10

£650 per week

**BERKSHIRE
HATHAWAY**
HOMESERVICES

LONDON

PROPERTY DETAILS

Guide Price £650 per week	Square Footage 470
Council Tax Band E	EPC Rating D

A beautifully presented one-bedroom apartment located in the desirable Redcliffe Square area, on the border of Chelsea and Earl's Court. This charming flat is situated in a well-maintained period building and offers a peaceful yet central living space..

Step outside to your private balcony, which provides direct access to the communal gardens opposite—a rare and valued feature in this sought-after location, perfect for relaxing or enjoying a morning coffee.

The flat is ideally located for those looking to enjoy the vibrant lifestyle of Chelsea, with easy access to the cafes, shops, and restaurants of Old Brompton Road and Earl's Court. Earl's Court and Gloucester Road Underground Stations are within walking distance, offering excellent transport links across the city.

FEATURES

- One Bedroom
- One Reception Room
- One Bathrooms
- Balcony
- Communal Gardens

LOCATION



KNIGHTSBRIDGE LETTINGS

55-57 SLOANE AVENUE, SW3 3DH

020 7235 9641

lettings.knightsbridge@bhhs-london.com

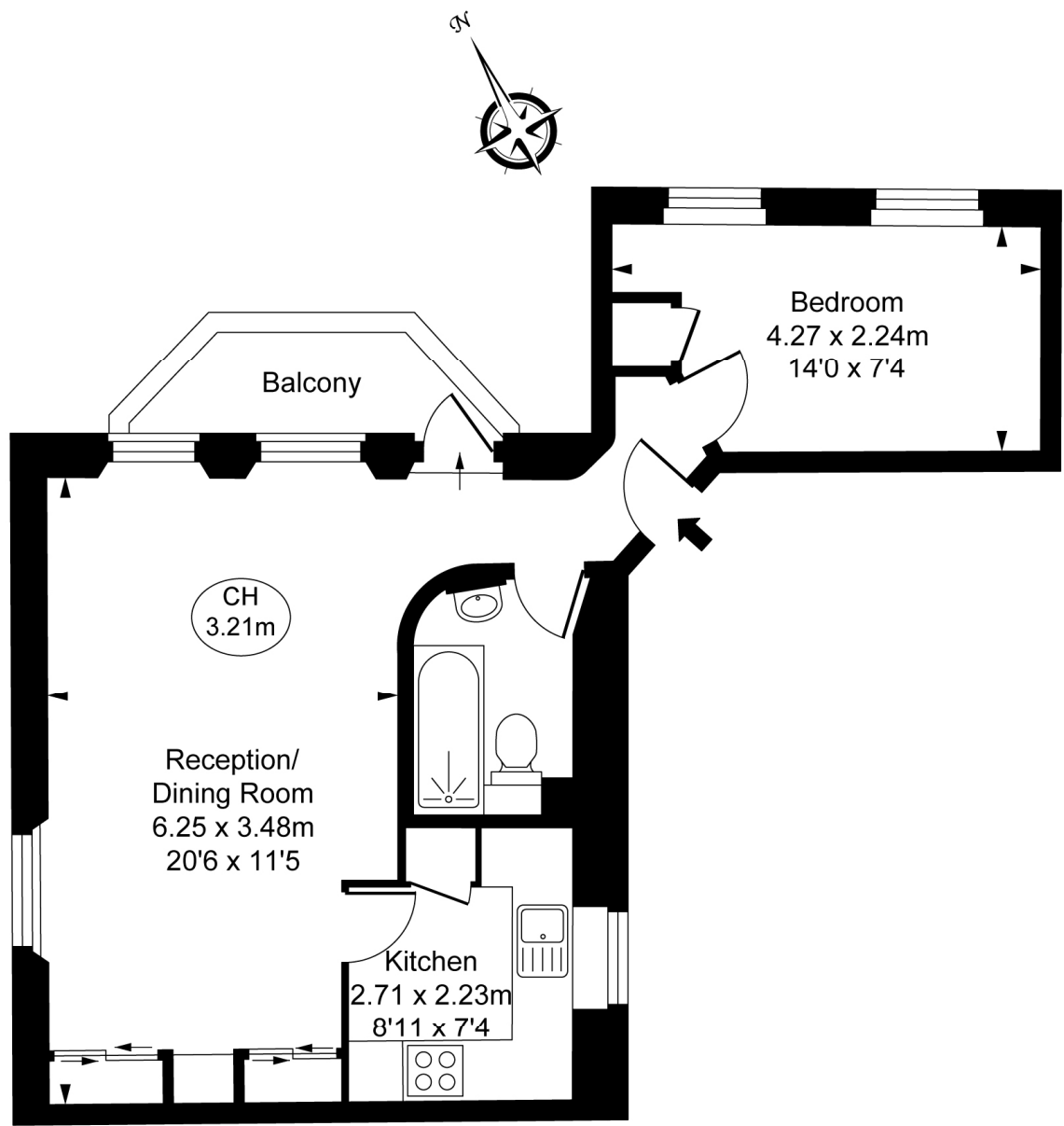


FLOORPLAN

Redcliffe Square, SW10

Approximate Gross Internal Area
43.67 sq m / 470 sq ft

(CH = Ceiling Heights)



Second Floor

This plan is not to scale. It is for guidance and not for valuation purposes.
All measurements and areas are approximate only, and have been prepared in accordance with the current edition of the RICS Code of Measuring Practice.
© Fulham Performance