



A FIRST FLOOR TWO BEDROOM TWO BATHROOM PERIOD
LATERAL APARTMENT IN THE HEART OF KNIGHTSBRIDGE

HANS ROAD

KNIGHTSBRIDGE, SW3

Asking Price
£2,400,000

**BERKSHIRE
HATHAWAY**
HOMESERVICES

LONDON

PROPERTY DETAILS

Guide Price	Square Footage
£2,400,000	815

Council Tax Band	EPC
H	C

A spacious and grand two-bedroom, two-bathroom apartment in the heart of Knightsbridge. This contemporary apartment combines natural period charm with the best of modern and practical living. Located on the first floor of a beautiful period building, this lateral apartment boasts 800 sq ft of living space. The apartment features an impressive large living room, complete with high ceilings, large windows, and a balcony. There is a separate contemporary kitchen with modern appliances, two large double bedrooms, both benefiting from their own ensuite bathrooms, and finally, a guest WC.

Located on Hans Road, this residence is just moments from the main Knightsbridge shopping parade, with household names such as Harrods and Harvey Nichols just a short walk away. Hyde Park is also a short walk away, providing tranquil escapism from the bustle of city life. Transport access can be found at Knightsbridge station, only a short walk away, with direct access to the West End, King's Cross, St Pancras Station, and to the west, Heathrow Airport—useful for those with a base overseas.

FEATURES

Two Bedrooms

Two Bathrooms

Lift

Residents Parking

First Floor

Wood Flooring

LOCATION



KNIGHTSBRIDGE SALES

55-57 SLOANE AVENUE, SW3 3DH

020 7235 9641

sales.knightsbridge@bhhs-london.com



FLOORPLAN

Flat 6, 18-20 Hans Road
Knightsbridge, London SW3

Approximate Gross Internal Floor Area
815 sq ft / 75.7 sq m

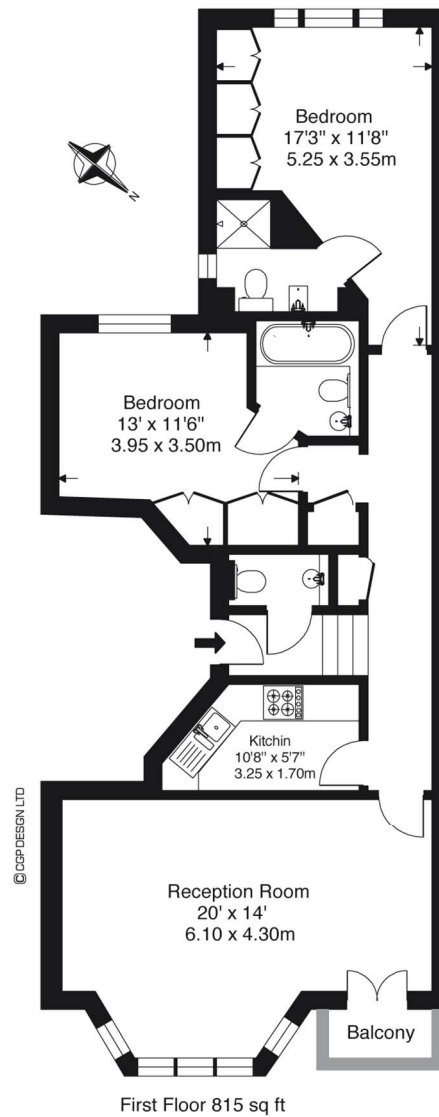


ILLUSTRATION FOR IDENTIFICATION PURPOSES ONLY

ALL MEASUREMENTS ARE MAXIMUM, AND INCLUDE WINDOW BAYS AND WARDROBES WHERE APPLICABLE
THIS PLAN MUST NOT BE REPRODUCED BY ANY OTHER PERSON WITHOUT PERMISSION.