



Bright And Spacious One Bedroom Apartment

HATHERLEY GROVE

BAYSWATER, W2

Asking Price
£550,000

**BERKSHIRE
HATHAWAY**
HOMESERVICES

LONDON

PROPERTY DETAILS

Guide Price
£550,000

Square Footage
488

Council Tax Band
D

EPC
D

Ground Rent
£50 pa

Service Charge
£2,000 pa

Tenure

Leasehold 996 years remaining

This charming raised ground-floor flat, set in a stunning Victorian building with a classic white stucco façade, offers a blend of historic elegance and modern convenience. Located just off the vibrant Westbourne Grove, this residence boasts impressively high ceilings and spacious interiors that enhance its period charm. The property is positioned to benefit greatly from the exciting regeneration plans on Queensway, promising enhanced amenities, shopping, and dining options right at your doorstep. Perfectly suited for those seeking a sophisticated urban lifestyle with both character and convenience, this flat provides a rare opportunity to live in one of London's most desirable areas.

FEATURES

One Bedroom

One Reception Room

One Bathroom

Ground Floor

Period

LOCATION



HYDE PARK SALES

24-25 Albion Street, W2 2AX

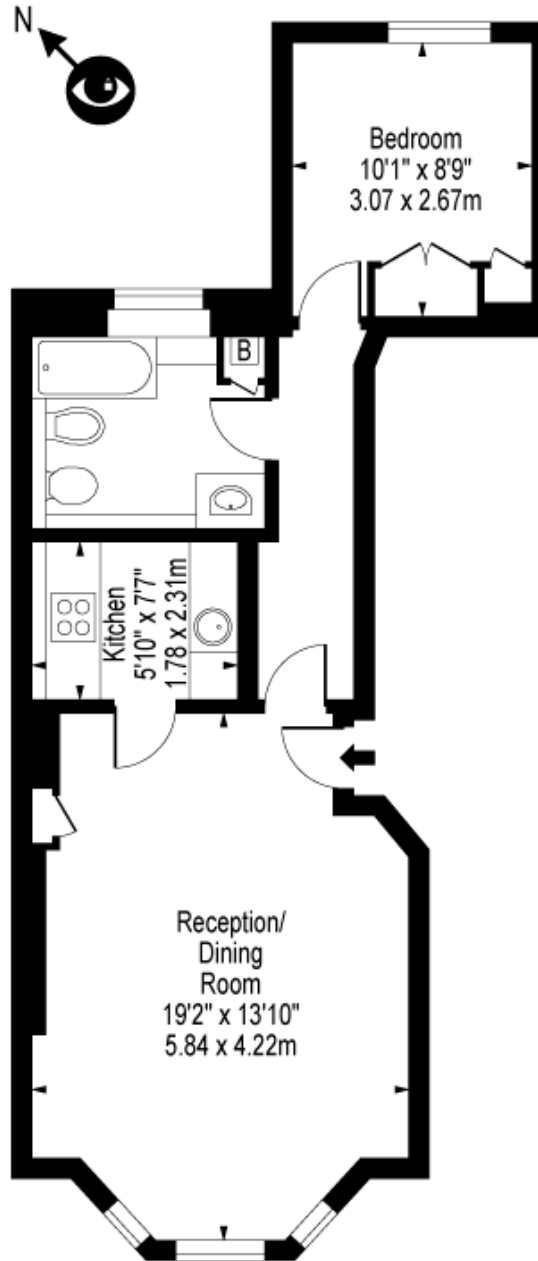
020 7262 2030

sales.hydepark@bhhs-london.com



FLOORPLAN

Hatherley Grove, Hyde Park, W2



Ground Floor

Approx Gross Internal Area **488 Sq Ft - 45.34 Sq M**

For Illustration Purposes Only - Not To Scale

Floor Plan by www.bpmmediagroup.com

Ref: No. P51084