



SERENE ONE-BEDROOM APARTMENT IN A COVETED
CHELSEA LOCATION - EMBANKMENT GARDENS

EMBANKMENT GARDENS

CHELSEA, SW3

Asking Price

£750,000

**BERKSHIRE
HATHAWAY**
HOMESERVICES

LONDON

PROPERTY DETAILS

Guide Price

£750,000

Square Footage

458

Council Tax Band

E

EPC

C

Tenure

Share of Freehold

Service Charge

£4780 pa

Situated on the third floor of a beautifully restored period building, this one-bedroom apartment blends timeless character with contemporary elegance. Set within a stunning redbrick conversion, the home has been thoughtfully refurbished, retaining the building's original charm while offering a modern, open-plan living space.

Embankment Gardens is a quiet, sought-after street just moments from the Thames, placing this property in one of London's most desirable areas. A short stroll away, you'll find the historic Chelsea Physic Garden and the peaceful Thames Embankment, ideal for riverside walks.

While the location offers a serene escape, the apartment is also within easy reach of the vibrant shopping, dining, and entertainment destinations of Sloane Square and King's Road. Whether you're enjoying the nearby cultural events like the Chelsea Flower Show or simply relaxing at home, this apartment offers the perfect balance of privacy and convenience.

FEATURES

One Bedroom

One Reception Room

One Bathroom

Residents Parking

Lift

Parking

Communal Gardens

LOCATION

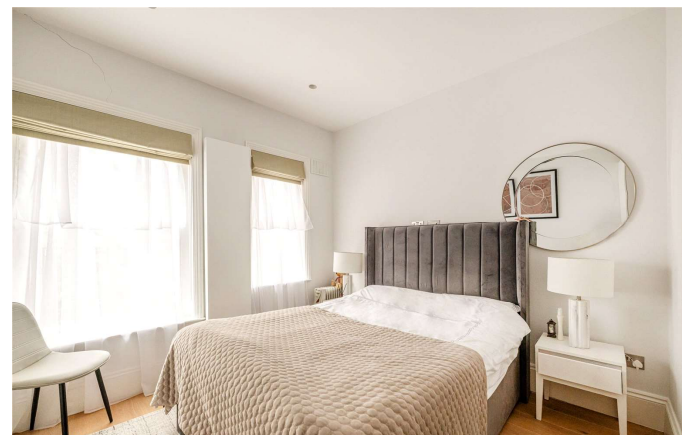


KNIGHTSBRIDGE SALES

55-57 SLOANE AVENUE, SW3 3DH

020 7235 9641

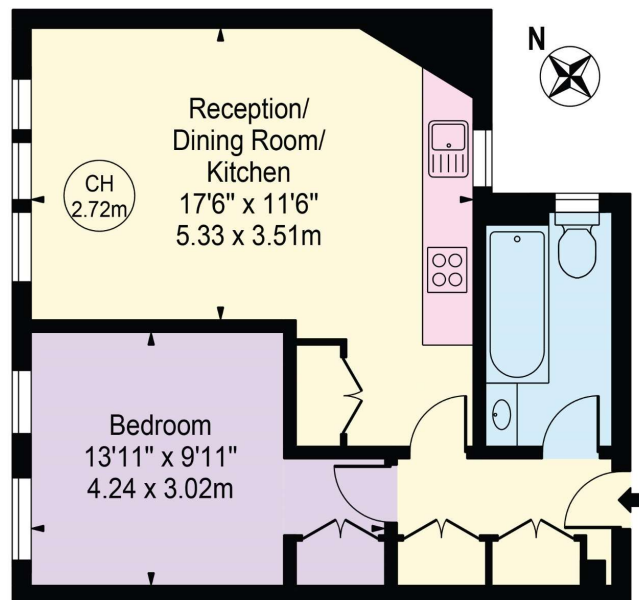
sales.knightsbridge@bhhs-london.com



FLOORPLAN

Embankment Gardens

Approx. Gross Internal Area 458 Sq Ft - 42.55 Sq M



Third Floor

For Illustration Purposes Only - Not To Scale

This floor plan should be used as a general outline for guidance only and does not constitute in whole or in part an offer or contract. Any intending purchaser or lessee should satisfy themselves by inspection, searches, enquiries and full survey as to the correctness of each statement. Any areas, measurements or distances quoted are approximate and should not be used to value a property or be the basis of any sale or let.

Copyright Morriarti Photography & Design LTD