



Renovated Spacious One Bedroom Apartment in
Portered Building

KENDAL STREET

HYDE PARK ESTATE, W2

£800 per week

**BERKSHIRE
HATHAWAY**
HOMESERVICES

LONDON

PROPERTY DETAILS

Guide Price £800 per week	Square Footage 482	<p>HEATING AND HOT WATER INCLUDED. This charming one-bedroom apartment features a spacious reception area with an open-plan kitchen. Quietly located at the rear, it offers views of the serene gardens. Coniston Court is just a short stroll from Marble Arch and the Heathrow Express, and it is ideally positioned near Hyde Park, in the heart of Connaught Village, offering fantastic local shopping and dining options.</p> <p>This image has been virtually staged for illustrative purposes only.</p>
Council Tax Band E	EPC Rating C	

FEATURES

- One Bedroom
- One Reception Room
- One Bathroom
- Concierge / Porter
- Fourth Floor
- Communal Gardens

LOCATION



HYDE PARK LETTINGS
24-25 Albion Street, W2 2AX

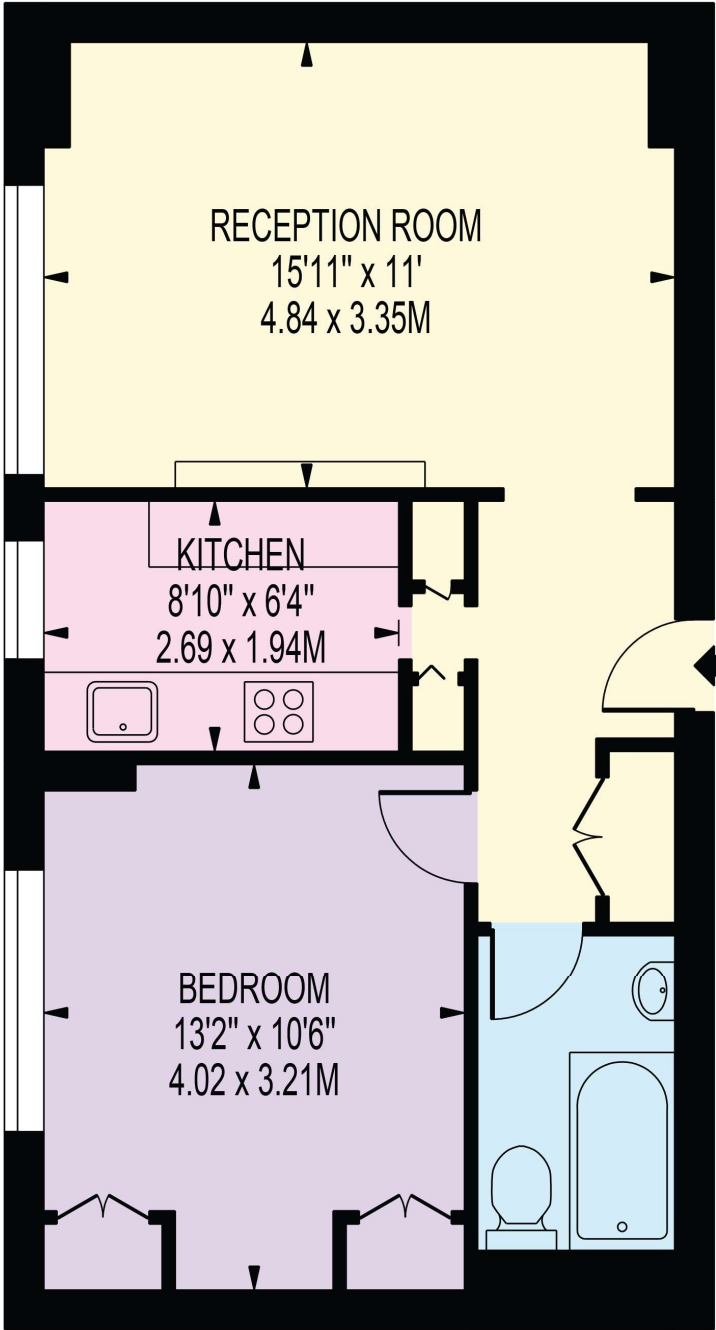
020 7262 2030
lettings.hydepark@bhhs-london.com



FLOORPLAN

CONISTON COURT

APPROXIMATE GROSS INTERNAL FLOOR AREA: 482 SQ FT - 44.80 SQ M



FOURTH FLOOR

FOR ILLUSTRATION PURPOSES ONLY

THIS FLOOR PLAN SHOULD BE USED AS A GENERAL OUTLINE FOR GUIDANCE ONLY AND DOES NOT CONSTITUTE IN WHOLE OR IN PART AN OFFER OR CONTRACT. ANY INTENDING PURCHASER OR LESSEE SHOULD SATISFY THEMSELVES BY INSPECTION, SEARCHES, ENQUIRIES AND FULL SURVEY AS TO THE CORRECTNESS OF EACH STATEMENT. ANY AREAS, MEASUREMENTS OR DISTANCES QUOTED ARE APPROXIMATE AND SHOULD NOT BE USED TO VALUE A PROPERTY OR BE THE BASIS OF ANY SALE OR LET.