



A Prestigious New Development Apartment
offering Excellent Amenities

NEWCASTLE PLACE

PADDINGTON, W2

Asking Price
£1,545,000

**BERKSHIRE
HATHAWAY**
HOMESERVICES

LONDON

PROPERTY DETAILS

Guide Price £1,545,000	Square Footage 809
Council Tax Band F	EPC B
Tenure Leasehold	

An opulent two bedroom apartment set in this prestigious development at West End Gate. Offering panoramic views of London and Hyde Park, set on the ninth floor of this new development offering first class amenities including 24 hour concierge, swimming pool, spa and gym.

The apartment comprises, two double bedrooms with comfort cooling and underfloor heating. Principle bedroom with en-suite bathroom and family bathroom adjoining the hallway. Spacious, open plan living area with far reaching viewings of London. Private balcony set off living room with West facing views.

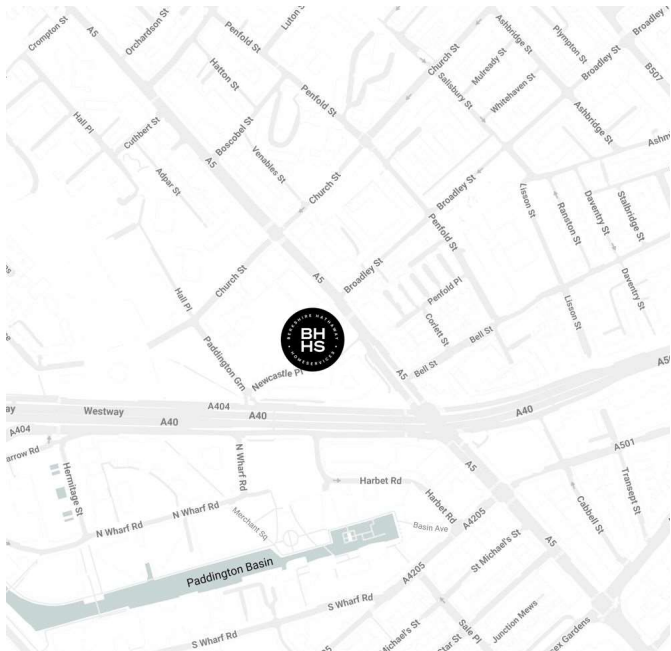
Westmark Tower is the flagship building of West End Gate, an exclusive development by Berkeley Homes within a well-connected area of London, benefitting from nearby transport links at Warwick Avenue, Maida Vale, Paddington, Marylebone and Baker Street.

Nearby local amenities include retail, restaurant and gyms of Paddington Basin, pleasant walks within Regents Park and along Regents Canal, and Lord's Cricket Ground.

FEATURES

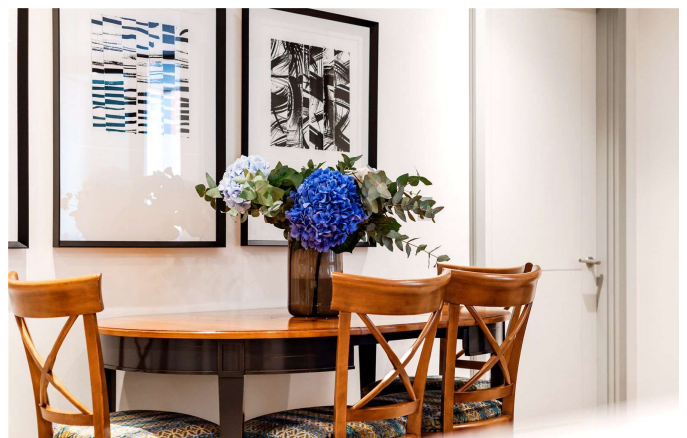
Two Bedrooms
One Reception Room
Two Bathrooms
Concierge / Porter
Lift
Balcony
Communal Gardens
Ninth Floor

LOCATION



HYDE PARK SALES
24-25 Albion Street, W2 2AX

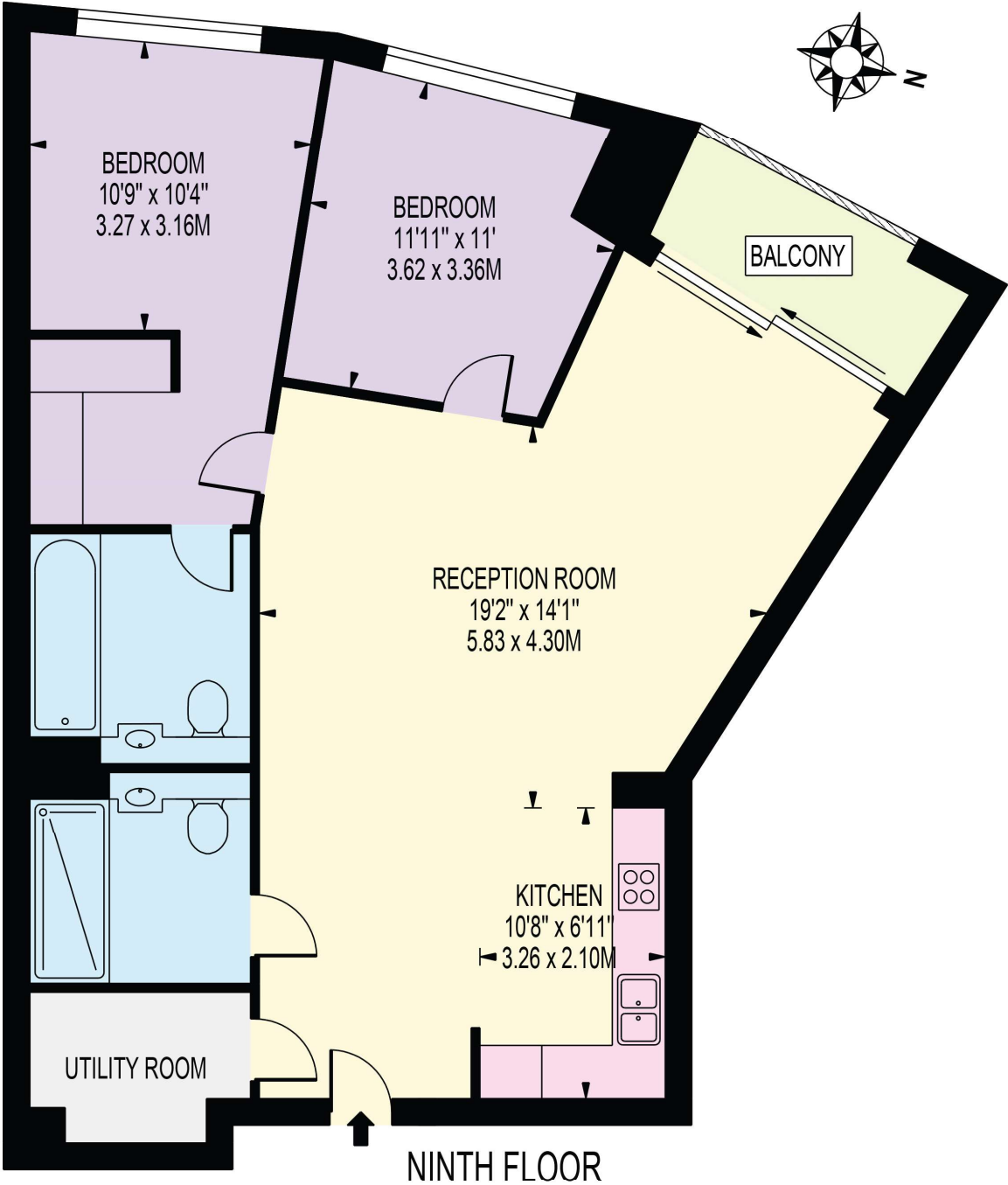
020 7262 2030
sales.hydepark@bhhs-london.com



FLOORPLAN

WESTMARK TOWER

APPROXIMATE GROSS INTERNAL FLOOR AREA: 974 SQ FT - 90.45 SQ M



FOR ILLUSTRATION PURPOSES ONLY

THIS FLOOR PLAN SHOULD BE USED AS A GENERAL OUTLINE FOR GUIDANCE ONLY AND DOES NOT CONSTITUTE IN WHOLE OR IN PART AN OFFER OR CONTRACT.
ANY INTENDING PURCHASER OR LESSEE SHOULD SATISFY THEMSELVES BY INSPECTION, SEARCHES, ENQUIRIES AND FULL SURVEY AS TO THE CORRECTNESS OF EACH STATEMENT.
ANY AREAS, MEASUREMENTS OR DISTANCES QUOTED ARE APPROXIMATE AND SHOULD NOT BE USED TO VALUE A PROPERTY OR BE THE BASIS OF ANY SALE OR LET.