



Modern One-Bedroom Apartment – River Park Tower

NINE ELMS LANE

NINE ELMS, SW8

£1,080 per week

**BERKSHIRE
HATHAWAY**
HOMESERVICES

LONDON

PROPERTY DETAILS

Guide Price £1,080 per week	Square Footage 701
Council Tax Band E	EPC Rating B

Located on the 14th floor of the renowned River Park Tower, this elegant one-bedroom apartment offers stylish, high-spec living in one of London's most prestigious riverside developments.

Residents benefit from a superb range of luxury amenities, including a 24-hour concierge, gym, swimming pool, spa, private cinema, and a thoughtfully designed children's playroom, ideal for families with young children, offering a safe and fun environment right within the building.

Situated in the heart of the vibrant Nine Elms regeneration area, this apartment is moments from the River Thames, Battersea Power Station, the U.S. Embassy, and enjoys excellent connectivity via Nine Elms and Vauxhall stations.

FEATURES

- One Bedroom
- One Reception Room
- One Bathroom
- Concierge/Porter
- Lift
- New Development

LOCATION

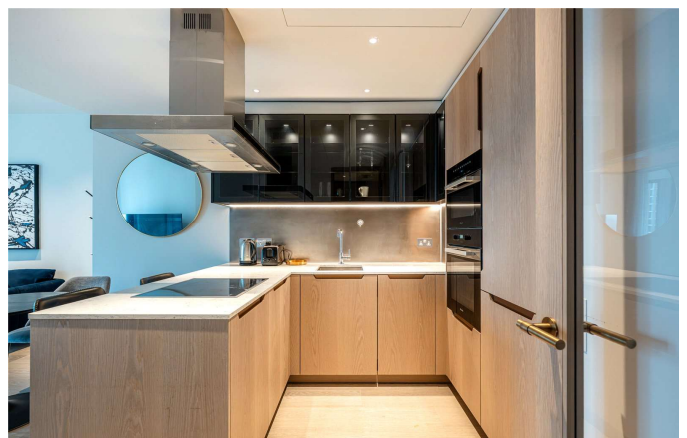


KNIGHTSBRIDGE LETTINGS

55-57 SLOANE AVENUE, SW3 3DH

020 7235 9641

lettings.knightsbridge@bhhs-london.com

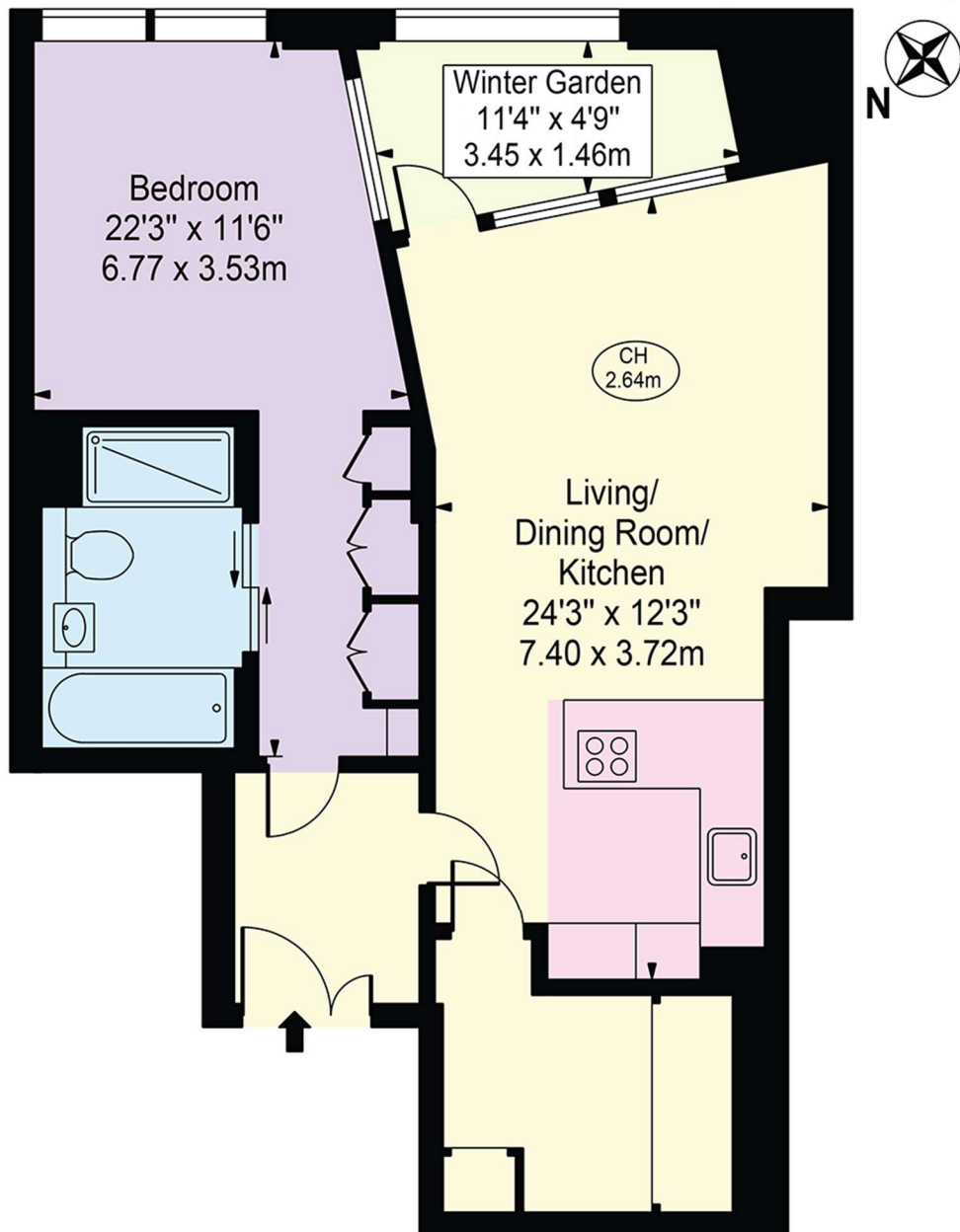


FLOORPLAN

River Park Tower

Approx. Total Internal Area 701 Sq Ft - 65.13 Sq M
(Including Winter Garden)

Approx. Gross Internal Area Of Winter Garden 56 Sq Ft - 5.17 Sq M



Fourteenth Floor

For Illustration Purposes Only - Not To Scale

This floor plan should be used as a general outline for guidance only and does not constitute in whole or in part an offer or contract.
Any intending purchaser or lessee should satisfy themselves by inspection, searches, enquiries and full survey as to the correctness of each statement.
Any areas, measurements or distances quoted are approximate and should not be used to value a property or be the basis of any sale or let.

Copyright Morriarti Photography & Design LTD