



Stunning Three Bedroom Architecturally Designed Apartment

# WESTBOURNE TERRACE

HYDE PARK ESTATE, W2

£1,000 per week

**BERKSHIRE  
HATHAWAY**  
HOMESERVICES

LONDON

# PROPERTY DETAILS

<b>Guide Price</b> £1,000 per week	<b>Square Footage</b> 1157
<b>Council Tax Band</b> G	<b>EPC Rating</b> D

Welcome to this beautifully newly renovated three-bedroom property ideally located in the heart of Paddington. Set within an elegant white stucco-fronted building, the apartment offers generous, well-proportioned living accommodation finished to a high contemporary standard.

Upon entering, the property immediately impresses with its fresh, modern interiors and thoughtful design throughout. The main living level features a bright open-plan reception and kitchen area, perfectly suited for both everyday living and entertaining. The space has been carefully configured to maximise light and flow, creating a welcoming and stylish environment.

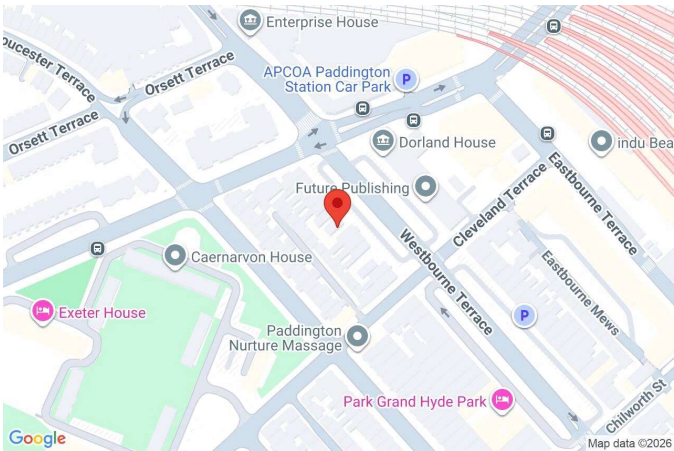
Situated moments from Paddington Station, the property enjoys superb transport links across London, including the Elizabeth Line, Heathrow Express, and multiple Underground lines. Residents are also perfectly placed to enjoy the array of local cafés, restaurants, shops, and green spaces that Paddington and the surrounding areas have to offer.

This exceptional three-bedroom home combines modern living, character, and convenience, making it an ideal choice for tenants seeking a high-quality rental in a prime central London location.

## FEATURES

- Three Bedrooms
- One Reception Room
- Three Bathrooms
- Wood Flooring
- High Contemporary Standard

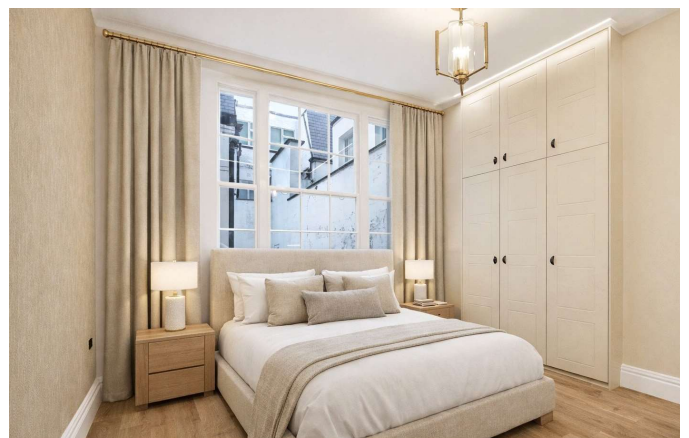
## LOCATION



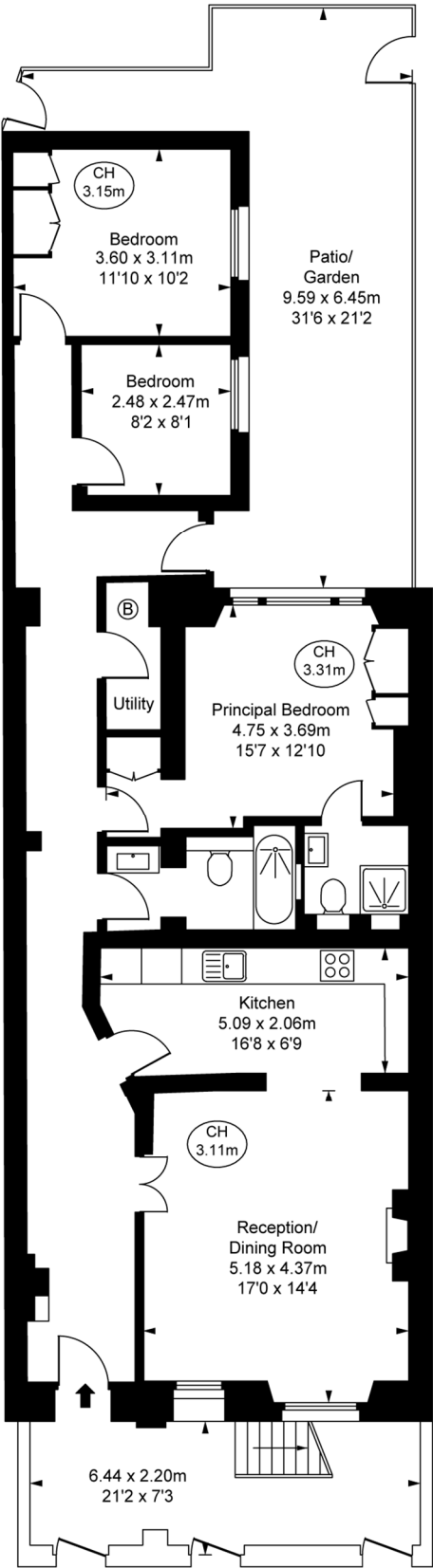
**HYDE PARK LETTINGS**  
24-25 Albion Street, W2 2AX

020 7262 2030  
lettings.hydepark@bhhs-london.com





# FLOORPLAN



Westbourne Terrace, W2  
Approximate Gross Internal Area  
107.50 sq m / 1,157 sq ft  
( CH = Ceiling Heights )



Lower Ground Floor

This plan is not to scale. It is for guidance and not for valuation purposes.  
All measurements and areas are approximate only, and have been prepared in accordance with the current edition of the RICS Code of Measuring Practice.  
© Fulham Performance