



One Bedroom in Popular XY Development in
Prime King's Cross

YORK WAY

KING'S CROSS, N7

Asking Price
£510,000

**BERKSHIRE
HATHAWAY**
HOMESERVICES

LONDON

PROPERTY DETAILS

Guide Price £510,000	Square Footage 572
Council Tax Band E	EPC B
Ground Rent £400 pa	Service Charge £4300 pa
Tenure Leasehold	

A spacious one bedroom apartment with a large private balcony and southerly views located within the popular XY Development.

Flooded with natural light and boasting beautiful far reaching views overlooking the iconic London skyline, XY is walking distance to Coal Drops Yard and King's Cross St. Pancras Station, which offers transport links to local, national and international destinations.

Residents also benefit from 24-Hour Concierge.

**Virtual Staging Used.

FEATURES

- One Bedroom
- One Reception Room
- One Bathroom
- Concierge/ Porter
- Lift
- Upper Floor
- Balcony
- New Development

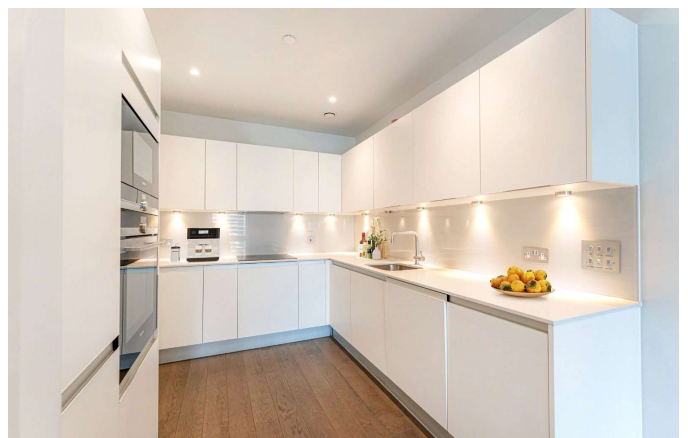
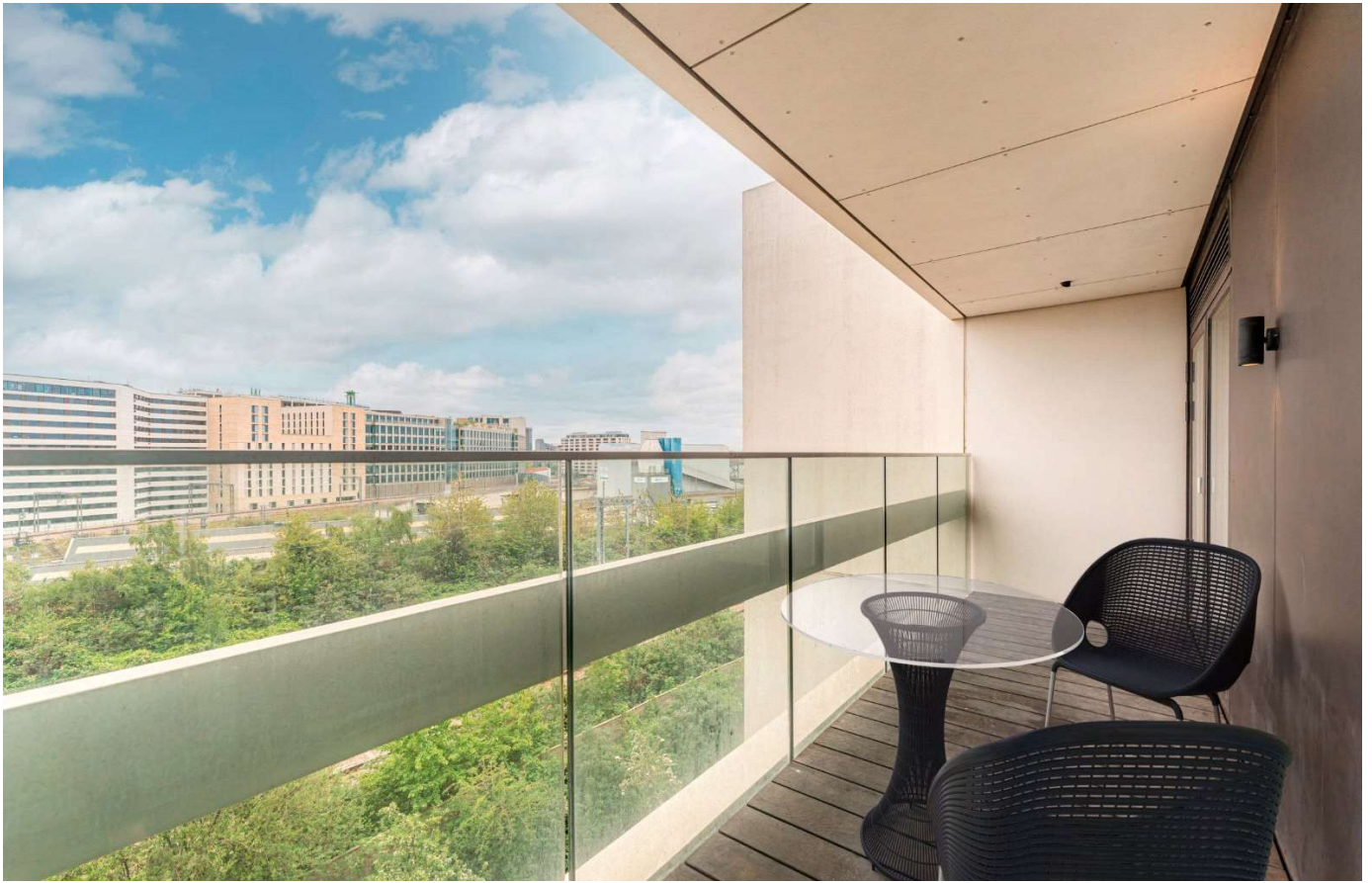
LOCATION



KINGS CROSS SALES

Unit 4,6 Pancras Square, N1C 4AG

020 7467 2020
sales.kingscross@bhhs-london.com

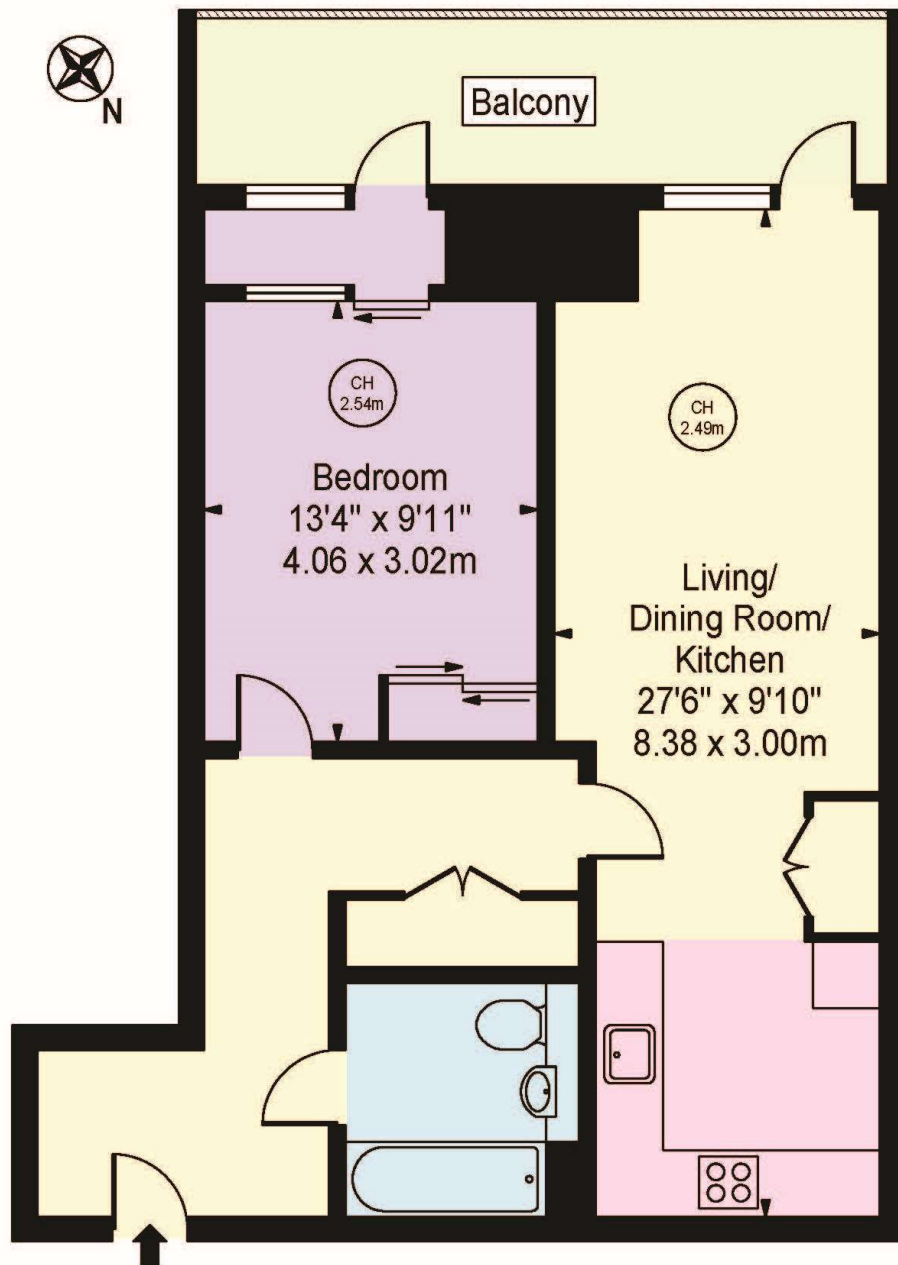


FLOORPLAN

XY Apartments

Approx. Gross Internal Area 572 Sq Ft - 53.14 Sq M
(Excluding Balcony)

Approx. External Area Of Balcony 100 Sq Ft - 9.29 Sq M



For Illustration Purposes Only - Not To Scale

This floor plan should be used as a general outline for guidance only and does not constitute in whole or in part an offer or contract.
Any intending purchaser or lessee should satisfy themselves by inspection, searches, enquiries and full survey as to the correctness of each statement.
Any areas, measurements or distances quoted are approximate and should not be used to value a property or be the basis of any sale or let.