



A Beautiful Lateral Apartment on Second Floor of
Mansion Block with a Lift

CABELL STREET

MARYLEBONE, NW1

Asking Price
£1,950,000

**BERKSHIRE
HATHAWAY**
HOMESERVICES

LONDON

PROPERTY DETAILS

Guide Price £1,950,000	Square Footage 1712
Council Tax Band G	EPC C
Ground Rent £100 pa	Service Charge £5000 pa
Tenure Leasehold 54 Years	

This large and lateral apartment is arranged over the Second Floor of a beautiful red brick mansion block with lift access on the fringes of Marylebone.

Entering into a spacious entrance hall, leading through to a large reception room, and a separate kitchen. There are four double bedrooms with an additional single bedroom or study and two bathrooms, one of which is en suite. The property has wooden floors throughout, high ceilings and many original period features with the most modern of conveniences.

Transport access can be found at Edgware Road, Marylebone, and Baker Street stations. Local eateries and coffee shops can also be found close by in Marylebone Village and Edgware Road.

FEATURES

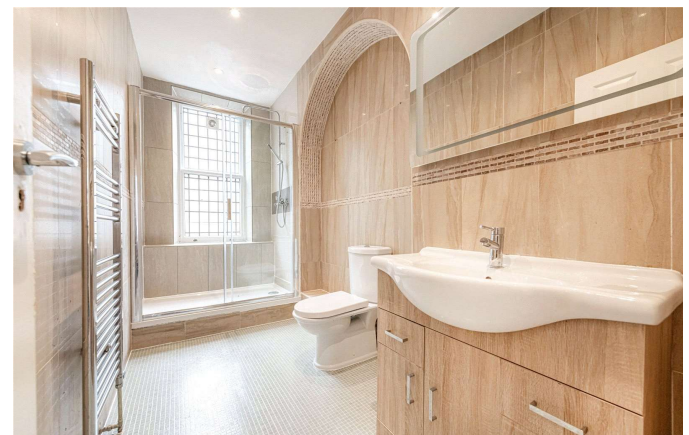
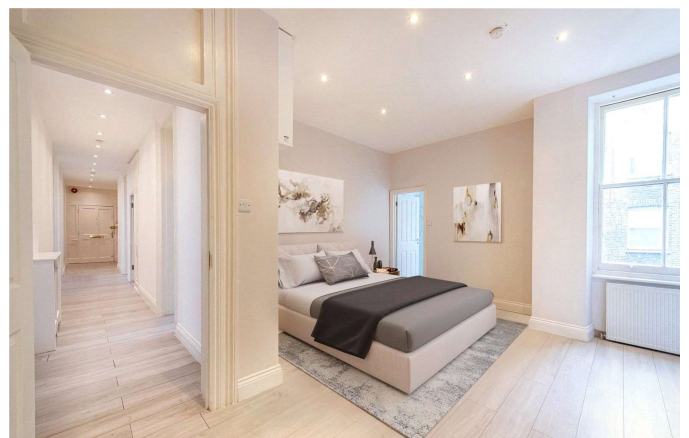
Four Bedrooms
One Reception Room
Two Bathrooms
Residents Parking
Lift
Upper Floor

LOCATION



HYDE PARK SALES
24-25 Albion Street, W2 2AX

020 7262 2030
sales.hydepark@bhhs-london.com

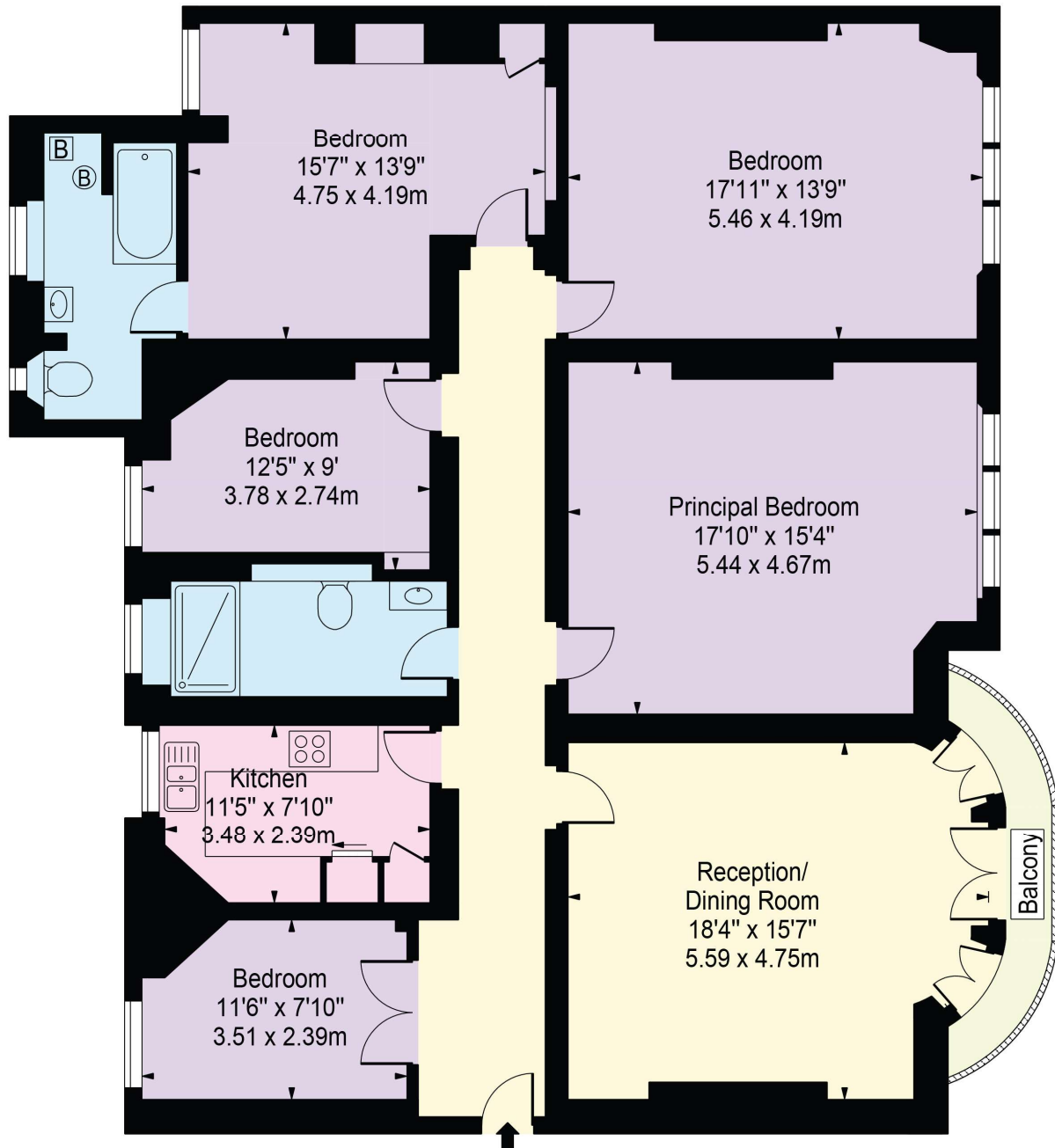


FLOORPLAN

Hyde Park Mansions

Approx. Gross Internal Area 1712 Sq Ft - 159.04 Sq M

Approx. External Area Of Balcony 37 Sq Ft - 3.44 Sq M



Second Floor

For Illustration Purposes Only - Not To Scale

This floor plan should be used as a general outline for guidance only and does not constitute in whole or in part an offer or contract.
Any intending purchaser or lessee should satisfy themselves by inspection, searches, enquiries and full survey as to the correctness of each statement.
Any areas, measurements or distances quoted are approximate and should not be used to value a property or be the basis of any sale or let.

Copyright Morriarti Photography & Design LTD